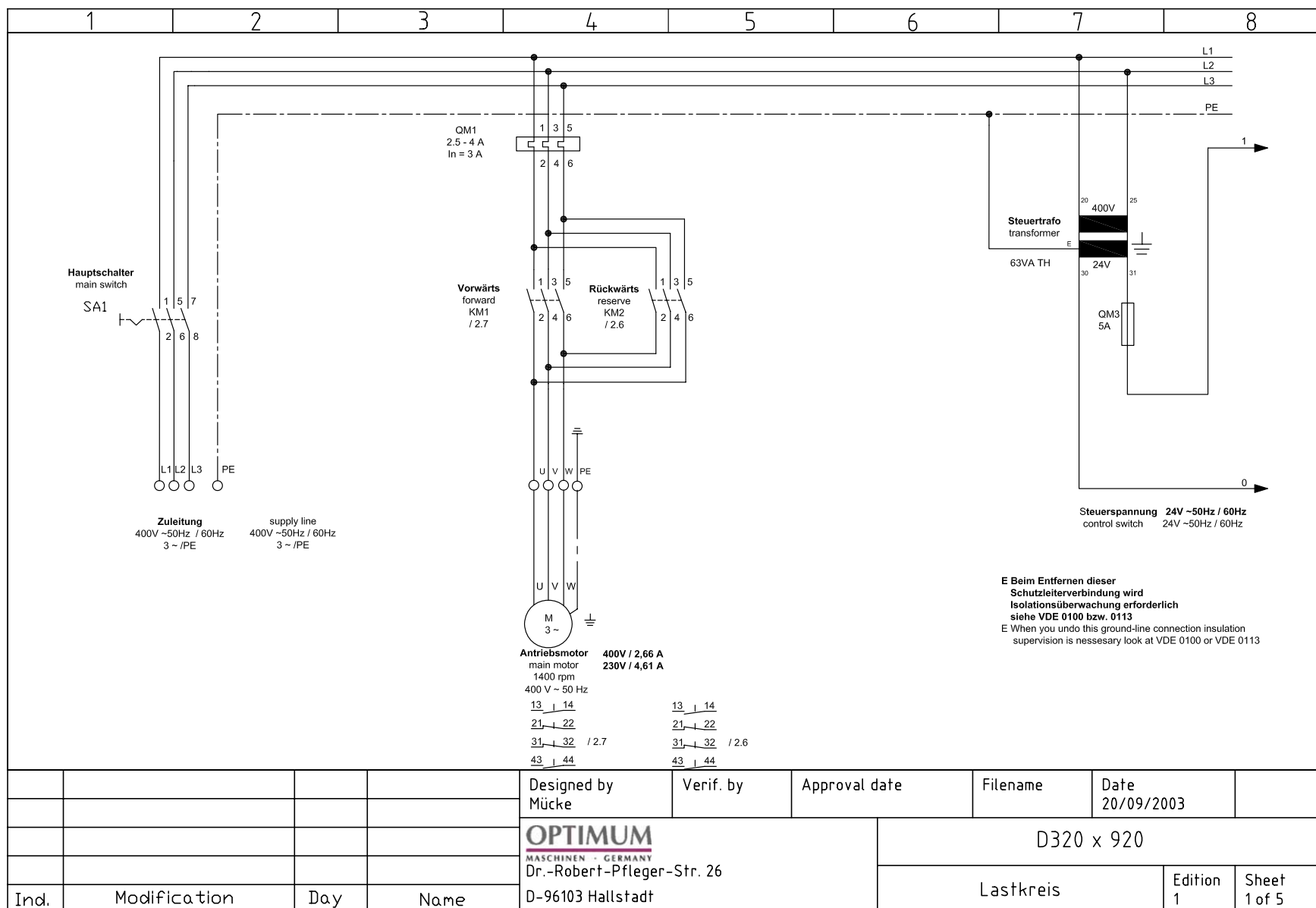
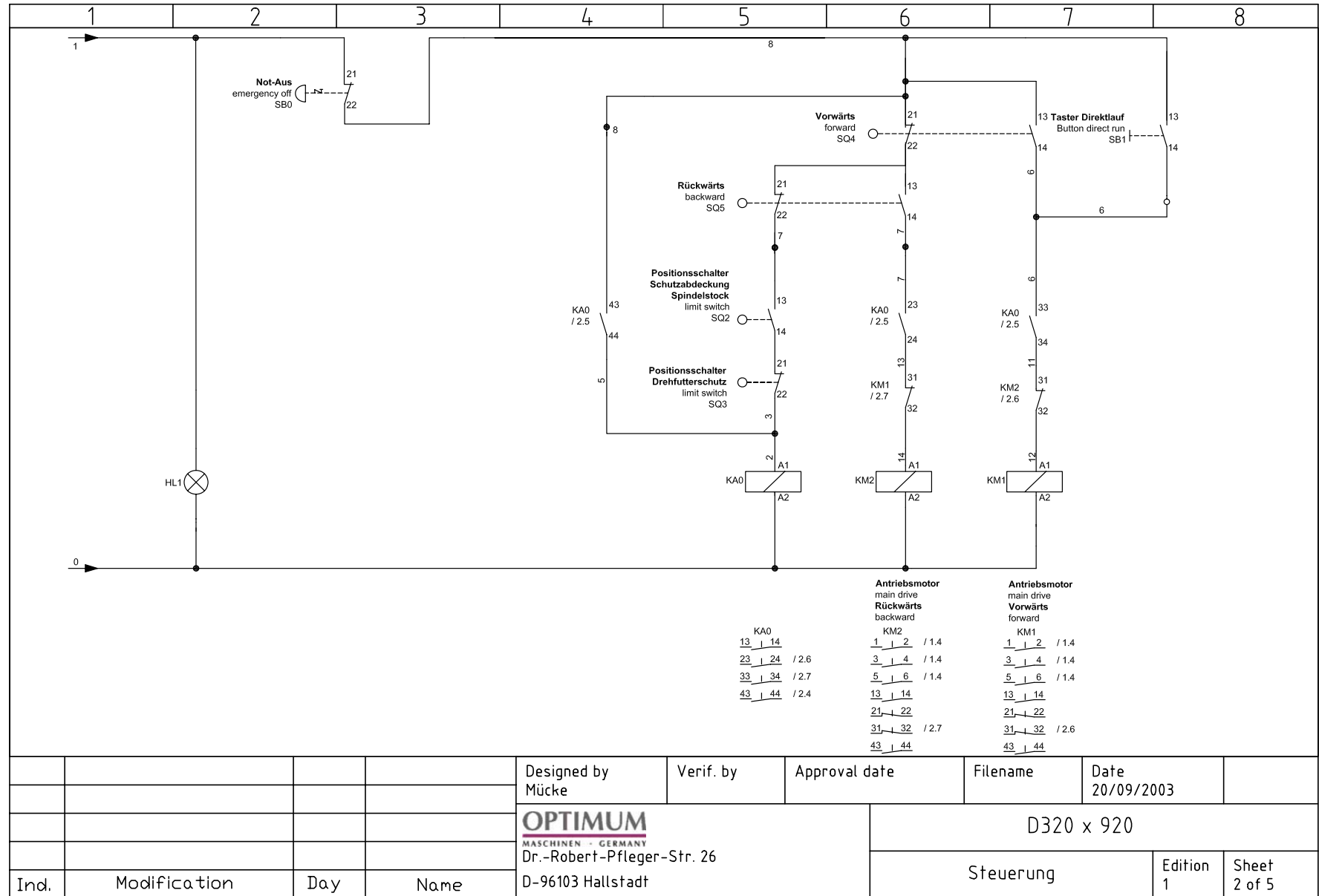
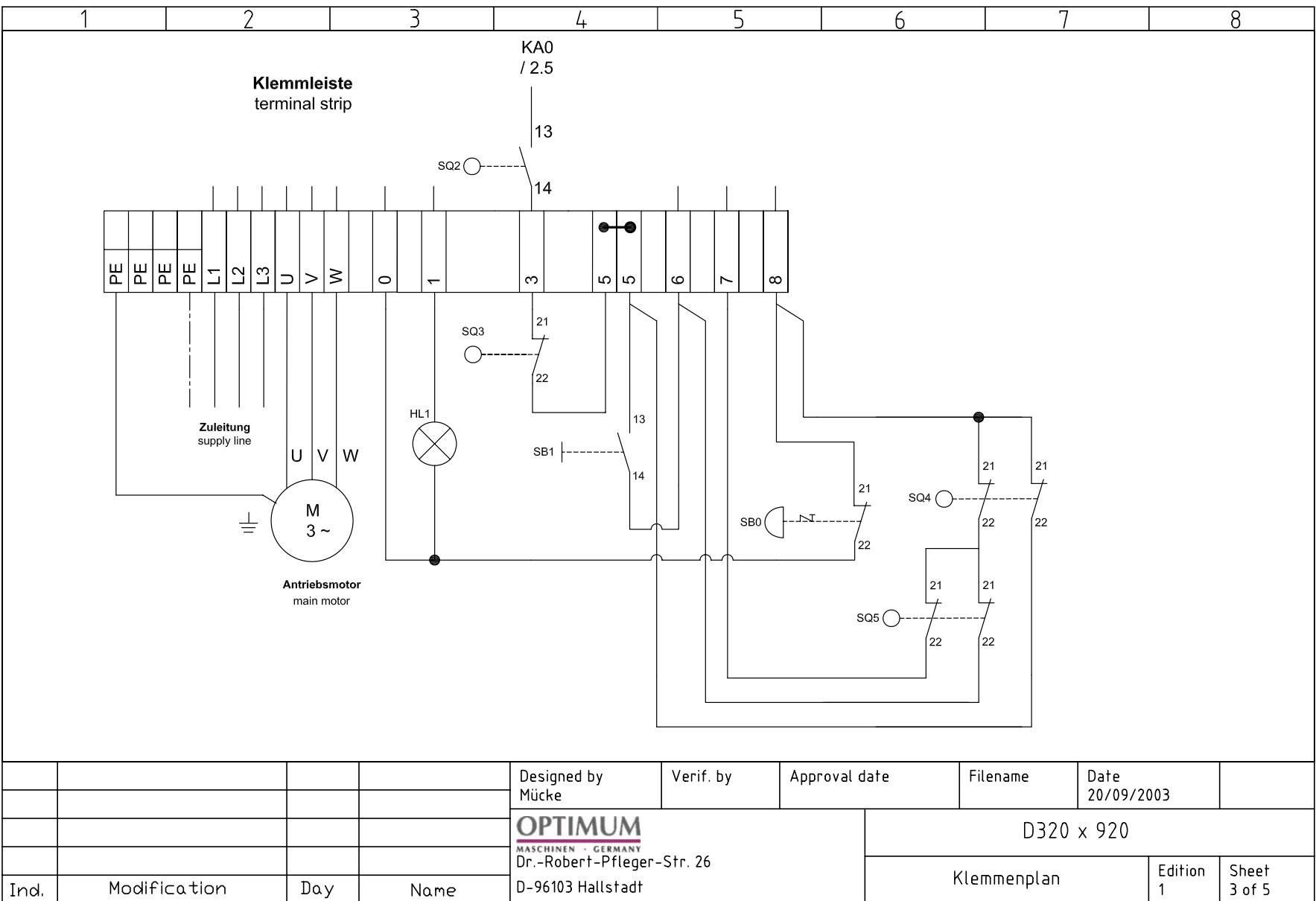


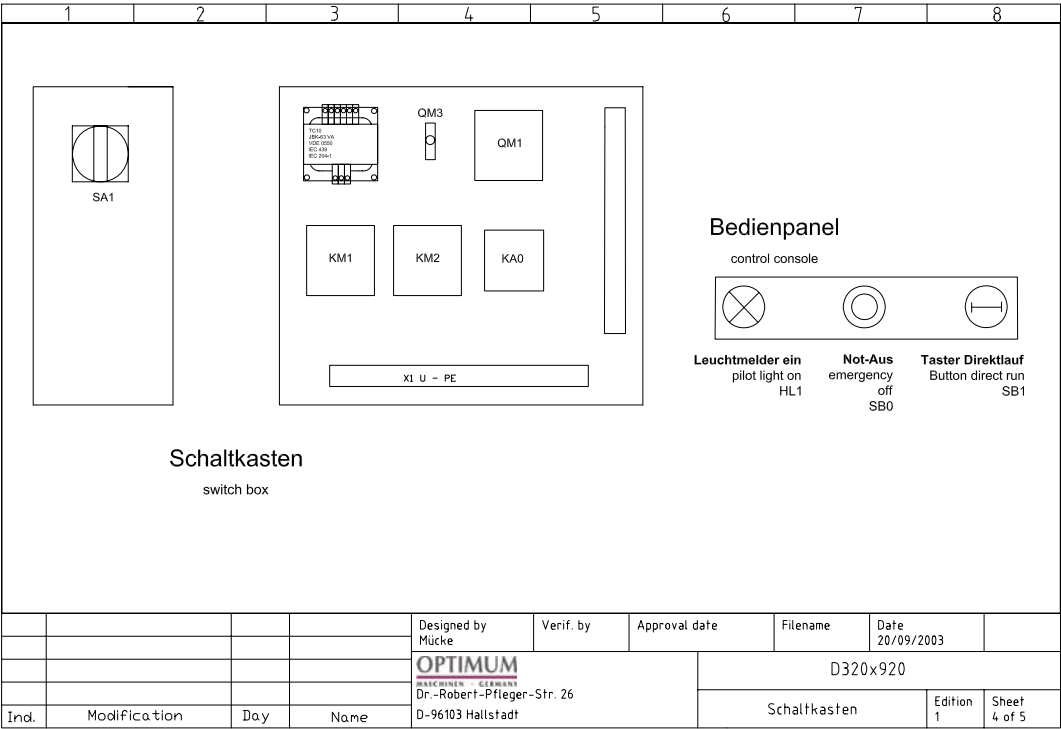
7.12 Schemat przewodowania D320







				Designed by Mücke	Verif. by	Approval date	Filename	Date 20/09/2003	
				OPTIMUM <small>MASCHINEN - GERMANY</small> Dr.-Robert-Pfleger-Str. 26 D-96103 Hallstadt			D320 x 920		
Ind.	Modification	Day	Name				Klemmenplan	Edition 1	Sheet 3 of 5



Poz.	nazwa	wymiar		symbol	ilosc
M	Drive motor	Motor YS 9024 1400 rpm 400V / 2,66 A 230V / 4,61 A IP 44		0 3400923 10 1	1
TC10	Transformer	63 VA	VDE 0550 IEC 204-1 IEC 439	0 3400923 10 2	1
QM1	Thermal overload	400V / 2,5 - 4 A	DZX 7-25 50 / 60 HZ	0 3400923 10 3	1
KM1	Contactor	Siemens 31B41		0 3400923 10 4	1
KM2	Contactor	Siemens 31B41		0 3400923 10 5	1
KA0	Contactor	3TH80 50/60Hz		0 3400923 10 6	1
QM3	Fuse 10x38	5A / 500V		0 3400923 10 7	1
QM3-1	Fuse Holder	10 x 38 16A / 500V	RT23-16	0 3400923 10 8	1
SB0	Emergency off	600V / 10A	LA103 IEC 497 normal closed	0 3400923 10 9	1
SB1	Button direct run	600V / 10A	LA103 IEC 497 normal open	0 3400923 10 10	1
HL1	Power lamp	24V	LA58-XD22	0 3400923 10 11	1
SQ3	Position switch protection jaw chuck	110 V	LXW5-11Q1	0 3400923 10 12	1
SQ2	Position switch protection head stock cover	110 V	normal open	0 3400923 10 13	1
SQ4	Switch forward	220V / 10A	LXW5-11G2 YK06-101 2	0 3400923 10 14	1
SQ5	Switch backwards	220V / 10A	JCH13 VDE 0660 IEC947	0 3400923 10 15	1
SA1	Main switch	380 - 440V / 20 A		0 3400923 10 16	1
X1	Terminal blocks			0 3400923 10 17	12
X	Box	265x350x140mm		0 3400923 10 18	1