

SIEMENS

Attachment to FAQ

Setting-up a network on a PCU20

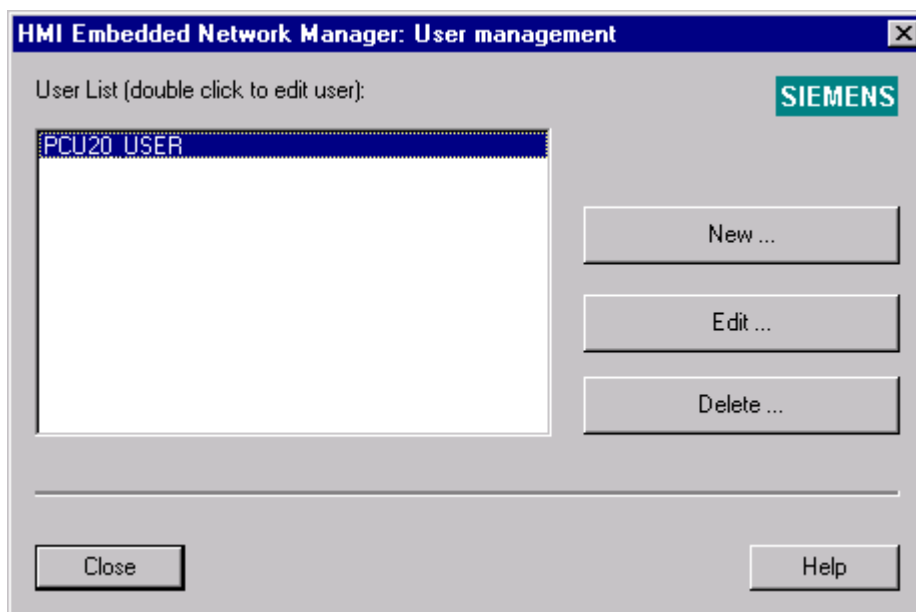
Network connection using a PCU20 on a local or server folder

On the PCU20, the network settings must be made corresponding to the local environment, IP address, Subnet mask, gateway.

<u>Connections:</u>	\\Computer name\release folder
<u>Network configuration:</u>	Computer name: PCU20
User:	PCU20_User
Password:	SUNRISE (of course these are only examples)
<u>Server names:</u>	IP address Computer names (from the server)
<u>File types:</u>	Filter the data to be displayed

The network manager must be installed on the computer to which a connection is to be established.

Notice: Set "permanent connection" if a connection is to be established with a server.



In the Network Manager set-up the PCU20_USER with the above specified password

SIEMENS

Attachment to FAQ

Setting-up a network on a PCU20

All of the drives of the "Server" that have been enabled, are displayed in the righthand window
Locate the appropriate folder in the righthand window using Add. This must match the above specified release folder.

Edit ...

User name:

Password:

Confirm Password:

SIEMENS

List of visible shared folders (double click to remove):

- Test

<-- Add

Remove -->

<-- Add hidden

List of shared folders (double click to add):

- Anwender-Zyklen
- Archive
- Definitionen
- Ghost
- Karli
- NERO
- SINDNC
- Software
- Standard-Zyklen
- Teleprogramme

Add hidden shared folder:

OS: Anwender-Zyklen (D:\SINDNC\Anwender-Zyklen)

OK Cancel Help

If a connection should be established to a server drive, then refer to the settings below.

The shared folder name must naturally match the setting on the PCU20.

