

# specifications:

PHASE	STEP ANGLE	RATED VOLTAGE	CURRENT /PHASE	RESISTANCE /PHASE	INDUCTANCE /PHASE	HOLDING TORQUE	ROTOR INERTIA	WEIGHT
	DEG/STEP	V	A	ohms	mH	kgf-cm	gcm <sup>2</sup>	Kg
unipolar	1.8	2.8	2.8	1.0	1.6	14	480	1.0
bipolar(s)	1.8	4.0	2.0	2.0	6.4	18.9	480	1.0
bipolar(p)	1.8	2.0	4.0	0.5	1.6	18.9	480	1.0

## Wiring Diagram:

A: BLU/WHT

A

A: BLU

A'

C: RED/WHT

C'

C: RED

C

B: GRN/WHT

B

B: GRN

B

D: BLK/WHT

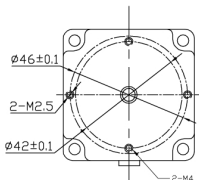
D

D: BLK

D



SEE FROM REAR SHAFT END

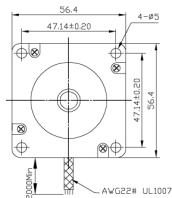
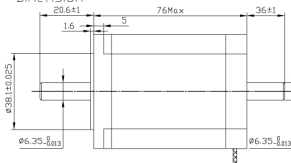



## Rotation:

CW DIRECTION	STEP	A C	C A	B D	D B
↓	1	+			
	2		+	+	
	3		+		+
	4	+			+
	1	+		+	

CW direction, see from the flange end

## Dimension:



					DESIGN	DATE	P.N.			
REV	ECN NO	DESCRIPTION	DRN	APP'D	DATE	TITLE				
UNLESS OTHERWISE SPECIFIED TOLERANCES  DECIMALS:      ANGULAR: .X      ± 0.5 .XX      ± 0.25      ± 0° 30'  .XXX      ± 0.1 UNIT: mm DO NOT SCALE DRAWING			MATERIAL		CHECK		USED ON			
					APPD		FL57STH76-2808B-1			
			THIRD ANGLE PROJECTION 		SCALE		DWG NO.		SS	REV
					SHEET		OF		MCP Ltd	