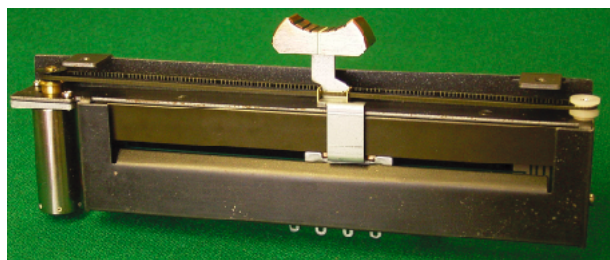


MF-914



Numbering System

MF - 914-

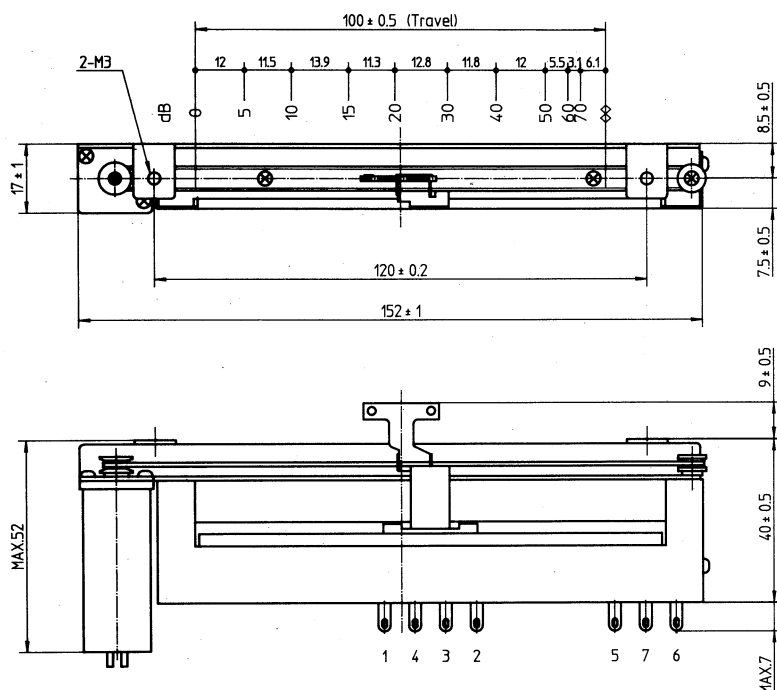
A 10 KΩ 10V

Total Resistance
- Standard $10K\Omega$

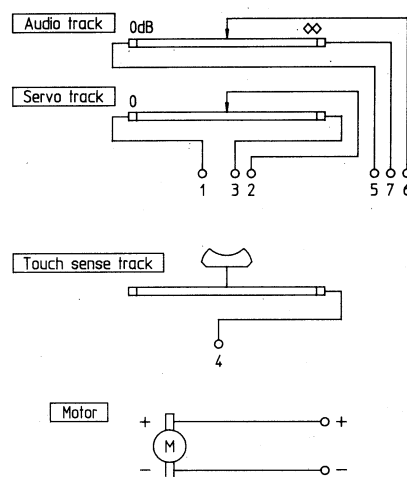
- A: Audio Taper
- B: Linear Taper
- 2B: Linear Taper x 2

- Voltage of Motor
 - 10V
 - J12V
 - M12V or M18V

Dimensions



Circuits



Specifications

Model

Output Law

Total Resistance $\pm 20\%$

Attenuation Accuracy

Insertion Loss Maximum

Cut off at 15KHz Minimum

Voltage Rating

Insulation Resistance

MF-914

Audio Taper or Linear Taper

or Linear Taper X 2

10K Ω (Standard)

0~20dB ±1.0dB

(at 10dB ± 0.5 dB)

~40dB ± 2.0 dB

0.5dB

100dB

Not to Exceed 20V DC.

50M Ω or More at DC 500V

Option

Knob : CP-2- ☐