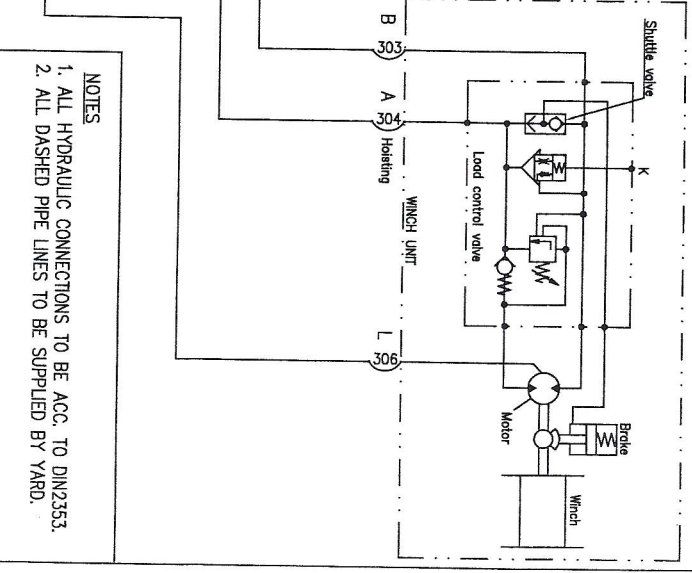
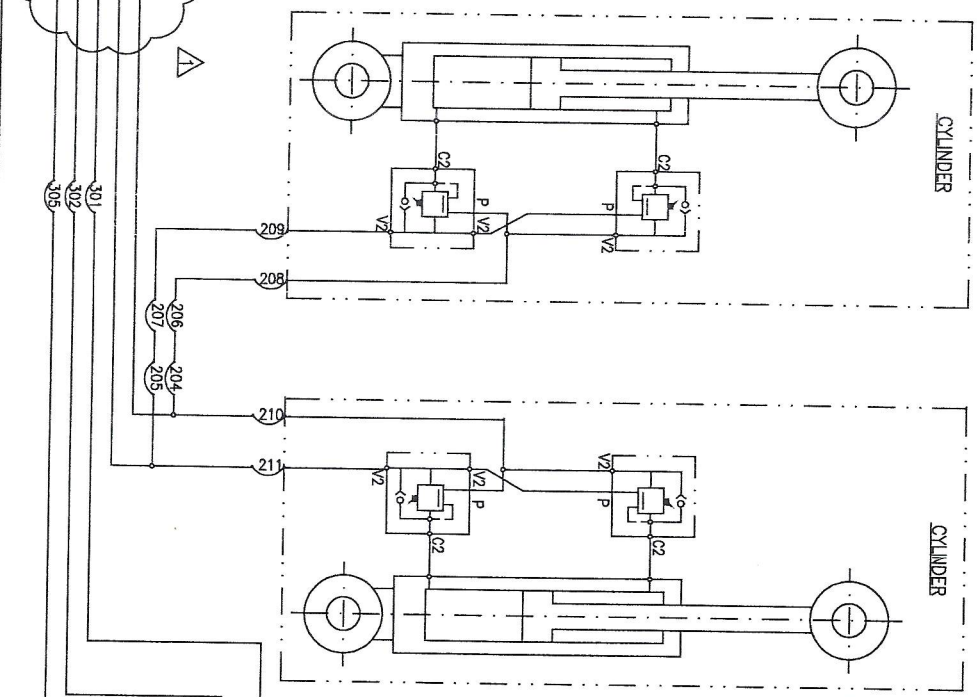
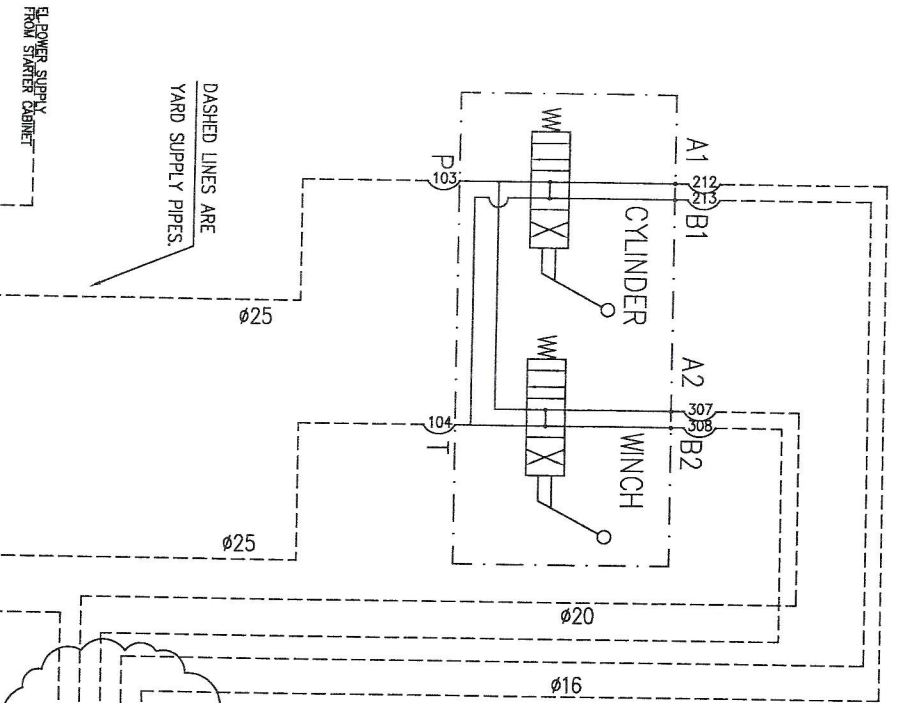


PIPING BY YARD  
HOSES BY NORSAFE

ALL FITTINGS FOR STRAIGHT END PIPES ACC. TO DIN2353.  
ALL HOSES TO COMPLY TO THE FOLLOWING STANDARD: 25N DIN 200 22

CONNECTION PORT:		LIST OF FITTINGS/HOSES			
HOSE	HOSE DIM.	1/2" BSP	3/4"	1"	1 1/2"
FITTING TYPE (FEMALE):	1/2" BSP	1/2" BSP	1/2" BSP	1/2" BSP	1/2" BSP
HOSE DIM:	1/2"	3/4"	3/8"	1/2"	1/2"
PIPE DIM FOR HOSE END 2:	1/2" x 2	3/4" x 2	1/2" x 2	1/2" x 2	1/2" x 2

CONNECTION PORT:		LIST OF FITTINGS/HOSES			
HOSE	HOSE DIM.	1/2" BSP	3/4"	1"	1 1/2"
FITTING TYPE (FEMALE):	1/2" BSP	1/2" BSP	1/2" BSP	1/2" BSP	1/2" BSP
HOSE DIM:	1/2"	3/4"	3/8"	1/2"	1/2"
PIPE DIM FOR HOSE END 2:	1/2" x 2	3/4" x 2	1/2" x 2	1/2" x 2	1/2" x 2
FEMALE FITTING THREAD:	M30x2	M30x2	M24x1.5	M24x1.5	M30x2
(DIN 2353 - BITE TYPE)					
YARD INTERFACE IS MALE FITTINGS ACCORDING TO					
DIN 2353 - METRIC THREAD AS ABOVE					



- NOTES
1. ALL HYDRAULIC CONNECTIONS TO BE ACC. TO DIN2353.
  2. ALL DASHED PIPE LINES TO BE SUPPLIED BY YARD.

LEGEND	DESCRIPTION	LEGEND	DESCRIPTION	LEGEND	DESCRIPTION
P	PRESSURE LINE	HYDRAULIC MOTOR	HYDRAULIC MOTOR	HYDRAULIC FILTER	HYDRAULIC FILTER
T	RETURN LINE	ELECTRIC MOTOR	ELECTRIC MOTOR	HYDRAULIC BREATHING/FILTER	HYDRAULIC BREATHING/FILTER
L	LEAK LINE	HYDRAULIC PUMP	HYDRAULIC PUMP	CYLINDER	CYLINDER
~X	SIGHT-GLASS	BALANCE VALVE	BALANCE VALVE	CONTROL VALVE	CONTROL VALVE
~X	DRAIN PLUG	NON RETURN VALVE	NON RETURN VALVE	LEVER OPERATOR	LEVER OPERATOR
		HYDRAULIC HOSE	HYDRAULIC HOSE	MANOMETER	MANOMETER

Project: DSWME H4449-51

Issue: 0

Reason for issue: ISSUED FOR CONSTRUCTION - MORE HOSES ADDED

Scale: 1:1

Drawn: [Signature]

Checked: [Signature]

Date: 06.03.05

Hydraulic Davits

Hydraulic Diagram

ID