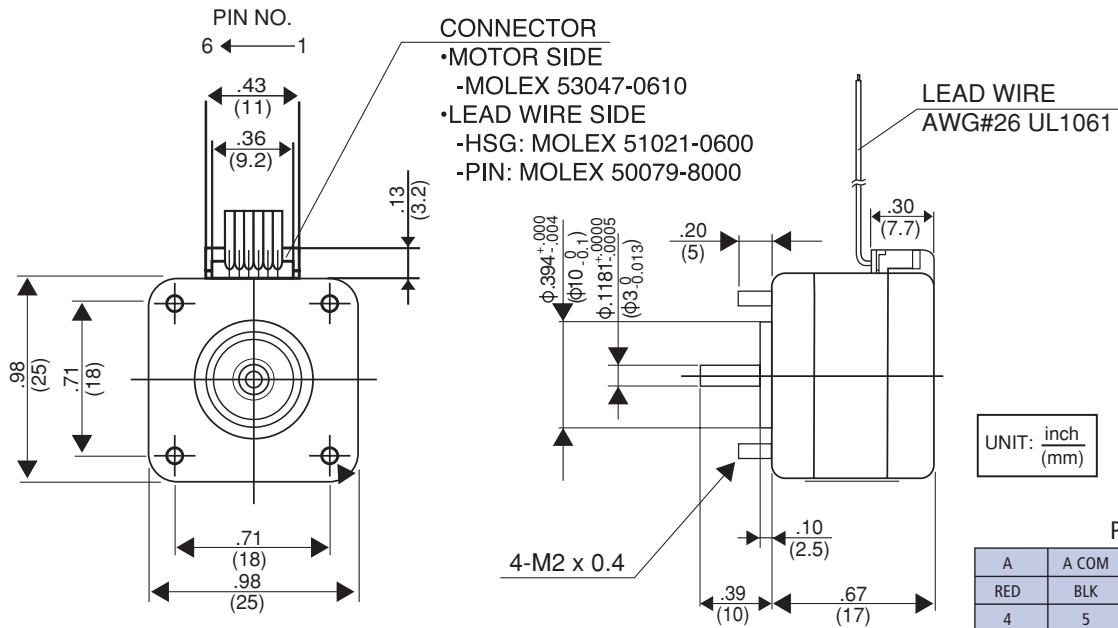


3.75°

10PU-M

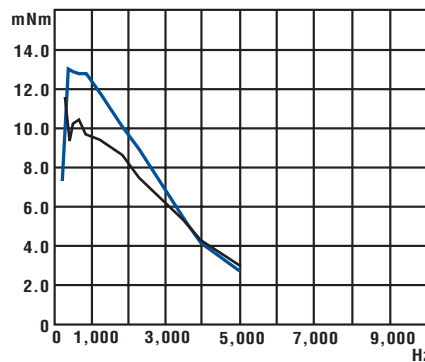
m t f



Model Specifications

Model Number	Magnet	Step Angle	Drive Sequence	Rated Current/Wdg	Winding Resistance	Holding Torque	Inductance	Rotor Inertia	Detent Torque	Weight
		Degrees		Amps	Ohms	Nm (kg-cm)	mH	kg-cm ²	Nm (g-cm)	g
10PU-M204-**ST	Ferrite	3.75°	BIPOLAR	0.36	10	0.0017 (0.17)	5.0	0.002	0.003 (30)	45
10PU-M204-**ST	Neodymium	3.75°	BIPOLAR	0.36	10	0.0019 (0.19)	5.0	0.002	0.004 (40)	45

Torque/Speed Characteristics



Model No.: 10PU-M204ST
 Driver: Bipolar Chopper Dual
 Supply Voltage: 24.0 (Volt)
 Drive Current: 0.9 (A/WDG)

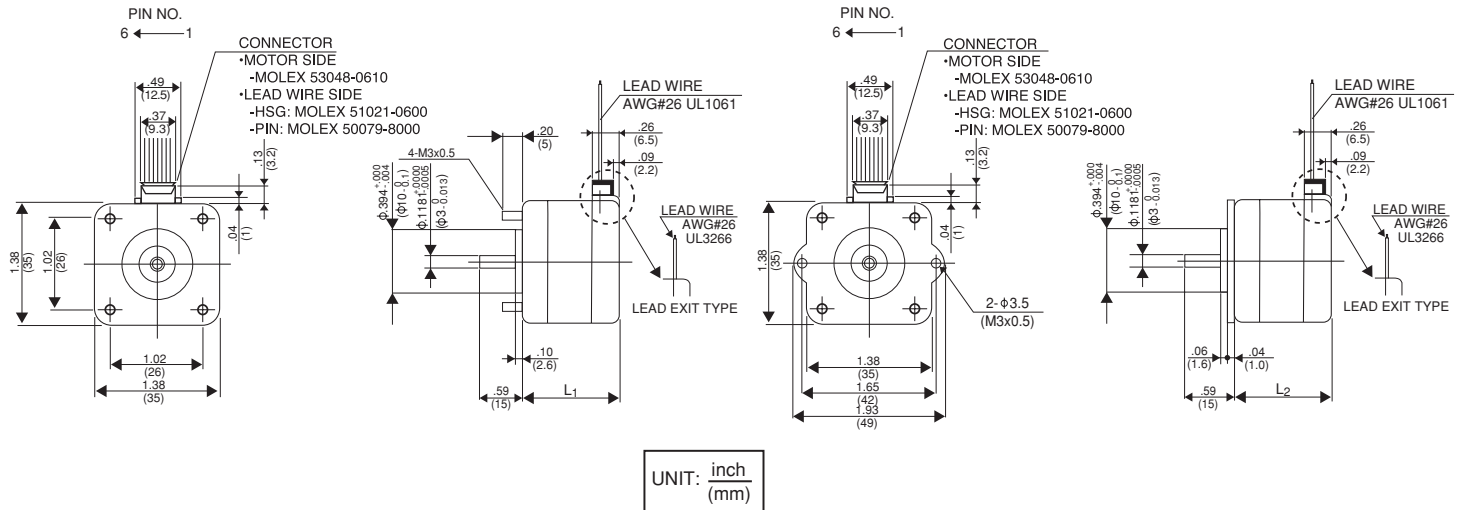
— NEODYMIUM PULL OUT
 — FERRITE PULL OUT



Standard Mount Type

14PM-M2XX, M0XX, 14PU-M2XX, M0XX

Special Mount Type



MOTOR LENGTH (mm)		
	l_1	l_2
14P*-M2**	21 MAX	22.6 MAX
14P*-M0**	25 MAX	26.6 MAX

A	A COM	\bar{A}	B	B COM	\bar{B}
RED	BLK	YEL	BLU	WHT	ORG
4	5	6	3	2	1

Model Specifications

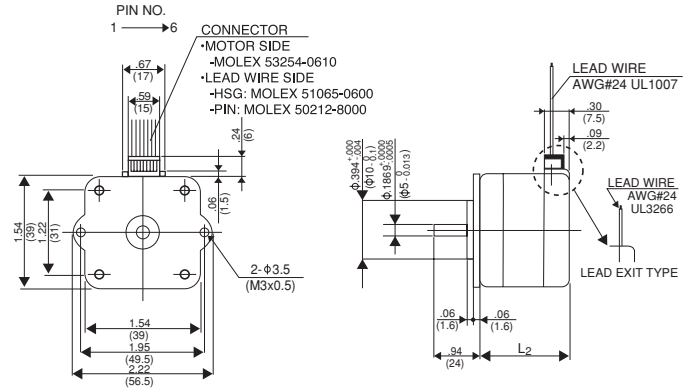
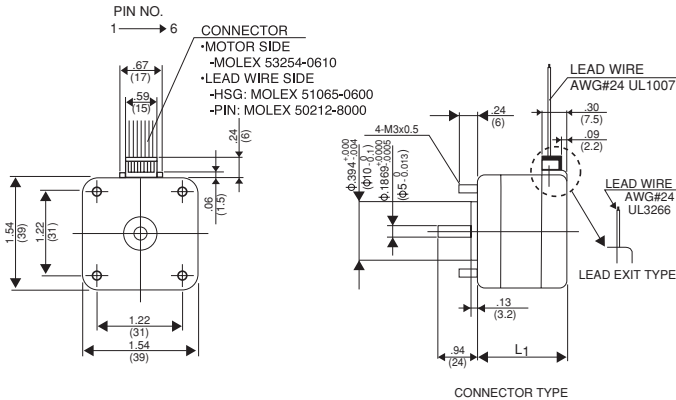
Model Number	Magnet	Step Angle	Drive Sequence	Rated Current/Wdg	Winding Resistance	Holding Torque	Inductance	Rotor Inertia	Detent Torque	Weight
		Degrees		Amps	Ohms	Nm (kg-cm)	mH	kg-cm²	Nm (g-cm)	g
14PM-M252-**ST	Ferrite	1.8°	UNIPOLAR	0.5	7.5	0.034 (0.35)	2.9	0.007	0.003 (30)	80
14PM-M252-**ST	Neodymium	1.8°	UNIPOLAR	0.5	7.5	0.039 (0.4)	2.5	0.007	0.004 (40)	80
14PM-M251-**ST	Ferrite	1.8°	BIPOLAR	0.5	7.5	0.044 (0.45)	5.5	0.007	0.003 (30)	80
14PM-M251-**ST	Neodymium	1.8°	BIPOLAR	0.5	7.5	0.054 (0.55)	5.0	0.007	0.004 (40)	80
14PM-M052-**ST	Ferrite	1.8°	UNIPOLAR	0.5	10	0.049 (0.5)	4.9	0.011	0.004 (40)	100
14PM-M052-**ST	Neodymium	1.8°	UNIPOLAR	0.5	10	0.069 (0.7)	4.4	0.011	0.008 (80)	100
14PM-M051-**ST	Ferrite	1.8°	BIPOLAR	0.5	10	0.069 (0.7)	9.4	0.011	0.004 (40)	100
14PM-M051-**ST	Neodymium	1.8°	BIPOLAR	0.5	10	0.098 (1.0)	8.6	0.011	0.008 (80)	100
14PU-M252-**ST	Ferrite	3.75°	UNIPOLAR	0.5	7.5	0.025 (0.25)	2.7	0.009	0.005 (50)	80
14PU-M252-**ST	Neodymium	3.75°	UNIPOLAR	0.5	7.5	0.029 (0.3)	2.3	0.009	0.007 (70)	80
14PU-M251-**ST	Ferrite	3.75°	BIPOLAR	0.5	7.5	0.034 (0.35)	5.3	0.009	0.005 (50)	80
14PU-M251-**ST	Neodymium	3.75°	BIPOLAR	0.5	7.5	0.044 (0.45)	4.7	0.009	0.007 (70)	80
14PU-M052-**ST	Ferrite	3.75°	UNIPOLAR	0.5	10	0.039 (0.4)	1.2	0.011	0.007 (70)	100
14PU-M052-**ST	Neodymium	3.75°	UNIPOLAR	0.5	10	0.054 (0.55)	1.8	0.011	0.01 (100)	100
14PU-M051-**ST	Ferrite	3.75°	BIPOLAR	0.5	10	0.049 (0.5)	4.4	0.011	0.007 (70)	100
14PU-M051-**ST	Neodvmium	3.75°	BIPOLAR	0.5	10	0.078 (0.8)	7.3	0.011	0.01 (100)	100



Standard Mount Type

16PM-M2XX, M0XX, 16PU-M2XX, M0XX

Special Mount Type

UNIT: $\frac{\text{inch}}{\text{mm}}$

MOTOR LENGTH (mm)

	L ₁	L ₂
16P*-M2**	26 MAX	27.6 MAX
16P*-M0**	30 MAX	31.6 MAX

PIN NO. VS PHASE

A	A COM	\bar{A}	B	B COM	\bar{B}
RED	BLK	YEL	BLU	WHT	ORG
3	2	1	4	5	6

Model Specifications

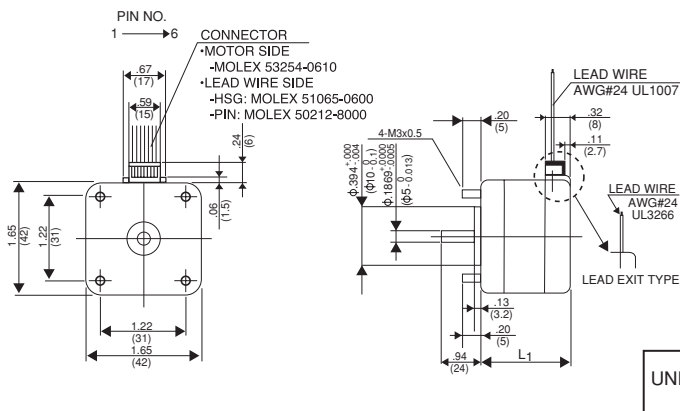
Model Number	Magnet	Step Angle	Drive Sequence	Rated Current/Wdg	Winding Resistance	Holding Torque	Inductance	Rotor Inertia	Detent Torque	Weight
		Degrees		Amps	Ohms	Nm (kg-cm)	mH	kg-cm ²	Nm (g-cm)	g
16PM-M205-**ST	Ferrite	1.8°	UNIPOLAR	0.6	5.5	0.064 (0.65)	4.3	0.011	0.004 (40)	140
16PM-M205-**ST	Neodymium	1.8°	UNIPOLAR	0.6	5.5	0.074 (0.75)	3.3	0.011	0.005 (50)	140
16PM-M204-**ST	Ferrite	1.8°	BIPOLAR	0.6	5.5	0.083 (0.85)	8.5	0.011	0.004 (40)	140
16PM-M204-**ST	Neodymium	1.8°	BIPOLAR	0.6	5.5	0.108 (1.1)	6.6	0.011	0.005 (50)	140
16PM-M031-**ST	Ferrite	1.8°	UNIPOLAR	0.6	6.7	0.078 (0.8)	6.4	0.017	0.005 (50)	170
16PM-M031-**ST	Neodymium	1.8°	UNIPOLAR	0.6	6.7	0.118 (1.2)	5.4	0.017	0.006 (60)	170
16PM-M032-**ST	Ferrite	1.8°	BIPOLAR	0.6	6.7	0.108 (1.1)	12.3	0.017	0.005 (50)	170
16PM-M032-**ST	Neodymium	1.8°	BIPOLAR	0.6	6.7	0.152 (1.55)	10.5	0.017	0.006 (60)	170
16PU-M203-**ST	Ferrite	3.75°	UNIPOLAR	0.6	5.5	0.049 (0.5)	3.7	0.015	0.007 (70)	140
16PU-M203-**ST	Neodymium	3.75°	UNIPOLAR	0.6	5.5	0.059 (0.6)	3.1	0.015	0.01 (100)	140
16PU-M202-**ST	Ferrite	3.75°	BIPOLAR	0.6	5.5	0.064 (0.65)	7.4	0.015	0.007 (70)	140
16PU-M202-**ST	Neodymium	3.75°	BIPOLAR	0.6	5.5	0.074 (0.75)	6.3	0.015	0.01 (100)	140
16PU-M007-**ST	Ferrite	3.75°	UNIPOLAR	0.6	6.7	0.064 (0.65)	5.9	0.017	0.008 (80)	170
16PU-M007-**ST	Neodymium	3.75°	UNIPOLAR	0.6	6.7	0.088 (0.9)	4.5	0.017	0.014 (140)	170
16PU-M008-**ST	Ferrite	3.75°	BIPOLAR	0.6	6.7	0.083 (0.85)	11.5	0.017	0.008 (80)	170
16PU-M008-**ST	Neodymium	3.75°	BIPOLAR	0.6	6.7	0.118 (1.2)	9.1	0.017	0.014 (140)	170



Standard Mount Type

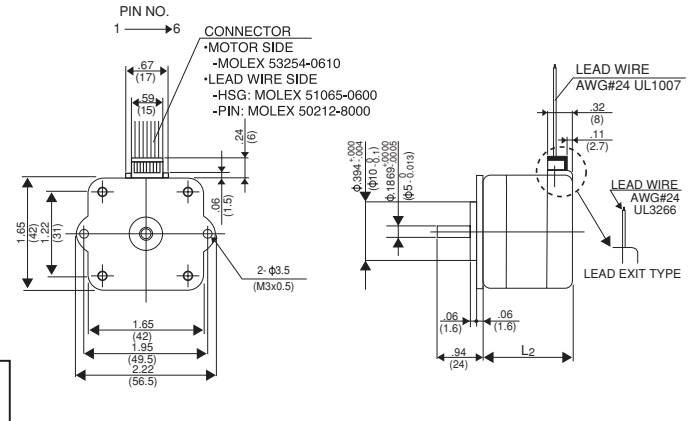
17PM-K2XX,K0XX,K5XX, 17PU-H2XX,H0XX,H5XX

Special Mount Type



MOTOR LENGTH (mm)

	L ₁	L ₂
17P*-2**	28 MAX	29.6 MAX
17P*-0**	32 MAX	33.6 MAX
17P*-5**	34 MAX	35.6 MAX



PIN NO. VS PHASE

A	A COM	\bar{A}	B	B COM	\bar{B}
RED	BLK	YEL	BLU	WHT	ORG
3	2	1	4	5	6

Model Specifications

Model Number	Magnet	Step Angle	Drive Sequence	Rated Current/Wdg	Winding Resistance	Holding Torque	Inductance	Rotor Inertia	Detent Torque	Weight
		Degrees		Amps	Ohms	Nm (kg-cm)	mH	kg-cm ²	Nm (g-cm)	g
17PM-K233-**ST	Ferrite	1.8°	UNIPOLAR	0.8	4.3	0.123 (1.25)	4.3	0.028	0.004 (40)	180
17PM-K233-**ST	Neodymium	1.8°	UNIPOLAR	0.8	4.3	0.132 (1.35)	4.4	0.028	0.006 (60)	180
17PM-K234-**ST	Ferrite	1.8°	BIPOLAR	0.8	4.3	0.152 (1.55)	7.7	0.028	0.004 (40)	180
17PM-K234-**ST	Neodymium	1.8°	BIPOLAR	0.8	4.3	0.176 (1.8)	8.2	0.028	0.006 (60)	180
17PM-K035-**ST	Ferrite	1.8°	UNIPOLAR	0.8	5.1	0.162 (1.65)	6.0	0.034	0.004 (40)	200
17PM-K035-**ST	Neodymium	1.8°	UNIPOLAR	0.8	5.1	0.216 (2.2)	4.9	0.034	0.01 (100)	200
17PM-K036-**ST	Ferrite	1.8°	BIPOLAR	0.8	5.1	0.201 (2.05)	11.3	0.034	0.004 (40)	200
17PM-K036-**ST	Neodymium	1.8°	BIPOLAR	0.8	5.1	0.289 (2.95)	8.9	0.034	0.01 (100)	200
17PM-K507-**ST	Ferrite	1.8°	UNIPOLAR	0.8	5.5	0.172 (1.75)	7.0	0.040	0.005 (50)	220
17PM-K507-**ST	Neodymium	1.8°	UNIPOLAR	0.8	5.5	0.245 (2.5)	5.9	0.040	0.012 (120)	220
17PM-K508-**ST	Ferrite	1.8°	BIPOLAR	0.8	5.5	0.221 (2.25)	13.4	0.040	0.005 (50)	220
17PM-K508-**ST	Neodymium	1.8°	BIPOLAR	0.8	5.5	0.323 (3.3)	11.3	0.040	0.012 (120)	220
17PU-H211-**ST	Ferrite	3.75°	UNIPOLAR	0.8	4.3	0.069 (0.7)	3.6	0.028	0.007 (70)	180
17PU-H211-**ST	Neodymium	3.75°	UNIPOLAR	0.8	4.3	0.078 (0.8)	3.7	0.028	0.008 (80)	180
17PU-H212-**ST	Ferrite	3.75°	BIPOLAR	0.8	4.3	0.088 (0.9)	6.7	0.028	0.007 (70)	180
17PU-H212-**ST	Neodymium	3.75°	BIPOLAR	0.8	4.3	0.098 (1)	7.3	0.028	0.008 (80)	180
17PU-H013-**ST	Ferrite	3.75°	UNIPOLAR	0.8	5.1	0.088 (0.9)	4.7	0.034	0.008 (80)	200
17PU-H013-**ST	Neodymium	3.75°	UNIPOLAR	0.8	5.1	0.132 (1.35)	4.2	0.034	0.021 (210)	200
17PU-H014-**ST	Ferrite	3.75°	BIPOLAR	0.8	5.1	0.123 (1.25)	9.3	0.034	0.008 (80)	200
17PU-H014-**ST	Neodymium	3.75°	BIPOLAR	0.8	5.1	0.172 (1.75)	8.3	0.034	0.021 (210)	200
17PU-H503-**ST	Ferrite	3.75°	UNIPOLAR	0.8	5.5	0.103 (1.05)	5.7	0.040	0.008 (80)	220
17PU-H503-**ST	Neodymium	3.75°	UNIPOLAR	0.8	5.5	0.157 (1.6)	5.2	0.040	0.023 (230)	220
17PU-H502-**ST	Ferrite	3.75°	BIPOLAR	0.8	5.5	0.137 (1.4)	11.3	0.040	0.008 (80)	220
17PU-H502-**ST	Neodymium	3.75°	BIPOLAR	0.8	5.5	0.201 (2.05)	9.5	0.040	0.023 (230)	220