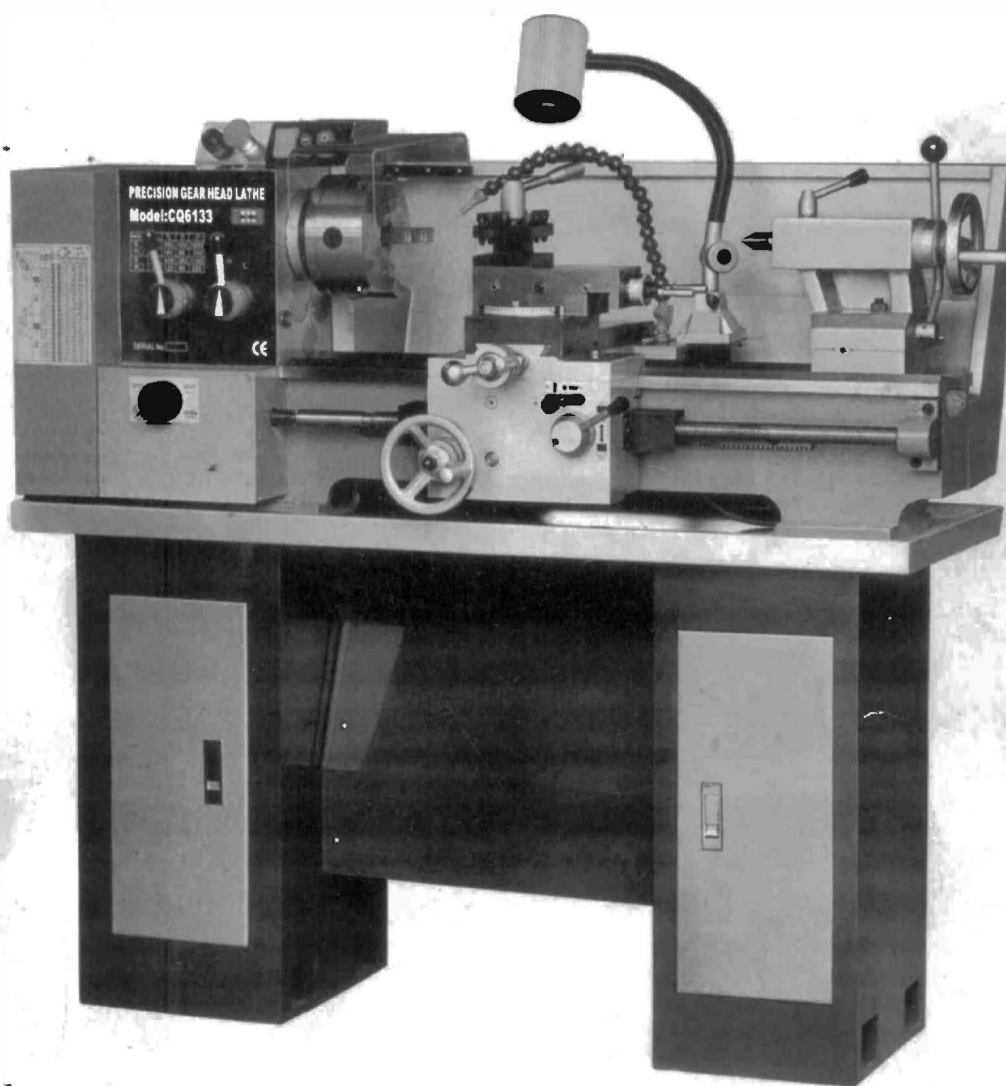


Precision Metal Lathe

Model: CQ6133

ASSEMBLY AND OPERATING INFORMATION



INDEX

General Safety Instructions	Page 3
Features Specifications	Page 4
Illustrated Features	Page 5
Lifting Installation	Page 6-7
Lubrication Positions	Page 8-9
Operating Controls	Page 10
Threading Chart	Page 11
Grounding Instructions	Page 12
Parts Diagram- Lathe Headstock	Page 13
Parts Listing- Lathe Headstock	Page 14-16
Parts Diagram-Lathe Trestle	Page 17
Parts Listing- Lathe Trestle	Page 17-18
Parts Diagram-Lathe Bed	Page 19
Parts Listing-Lathe Bed	Page 20-21
Parts Diagram- Lathe Apron	Page 22
Parts Listing – Lathe Apron	Page 23-24
Parts Diagram-Tailstock	Page 25
Parts Listing-Tailstock	Page 26
Parts Diagram-Compound Box	Page 27
Parts Listing-Compound Box	Page 28

GENERAL SAFETY INSTRUCTIONS

EXTREME CAUTION SHOULD BE USED IN OPERATION ALL POWER TOOLS. KNOW YOUR POWER TOOL, BE FAMILIAR WITH ITS OPERATION. READ THE OWNER'S MANUAL AND PRACTICE SAFE USAGE PROCEDURES AT ALL TIMES.

- **CONNECT** your machine **ONLY** to the matched and specified power source.
- **WEAR SAFETY GLASSES, RESPIRATORS, HEARING PROTECTION and SAFETY SHOES** when operating heavy machinery. **Always wear safety glasses.**
- **DO NOT** wear loose clothing or jewellery when operating machinery.
- **A Safe Environment is important.** Keep the area free of dust, dirt and other debris in the immediate vicinity of the machine.
- **BE ALERT!** Do Not Use prescription or other drugs that may affect your ability or judgement to safely use this machine.
- **DISCONNECT** the power source when changing tool bits and or any equipment.
- **NEVER** leave an operating tool unattended.
- **ALWAYS** keep blades, knives or bits sharp and properly aligned.
- **ALWAYS** keep all safety guards in place and ensure their proper function.
- **ALWAYS** make sure that any tools used for adjustments are removed before operating the machine.
- **ALWAYS** secure your work with the appropriate clamps or vises.
- **ALWAYS** keep bystanders safely away while operating machinery.
- **THINK SAFELY. WORK SAFELY.** Never attempt a procedure if it does not feel safe or comfortable.

CQ6133 METAL LATHE

As part of the growing line of metalworking equipment, we are proud to offer the CT089 Metal Lathe. The name guarantees Craft Excellence. By following the instructions and procedures laid out in this owner's manual, you will receive years of excellent service and satisfaction. The CQ6133 is a professional tool and like all power tools, proper care and safety procedures should be adhered to.

Features and Specifications

Max. Swing over bed	330mm
Max. Length of work piece	600mm/800mm
Max. Swing diameter over tool post	220mm
Spindle Bore	38mm
Spindle Taper	MT.5#
Max Lateral Stroke over tool post	160mm
Max Longitudinal stroke over tool post	100mm
Metric Thread kinds on processing	17
Inch Thread kinds on processing	20
Metric thread pitch on processing	0.5-4mm
Inch thread pitch on processing	9-401mm
Longitudinal-feed on spindle tool post	0.135-01.80mm
Max. stroke of tail stock sleeve	70mm
Tail stock sleeve taper	MT.3#
Spindle speeds available	12
Spindle speeds range	60-1650rpm
Electromotor	1100w/220v/ 50HZ (or110v/60HZ)
Net weight	330kg
Full size	136cm*70cm*56cm
Outer packing size	148cm*86cm*70cm

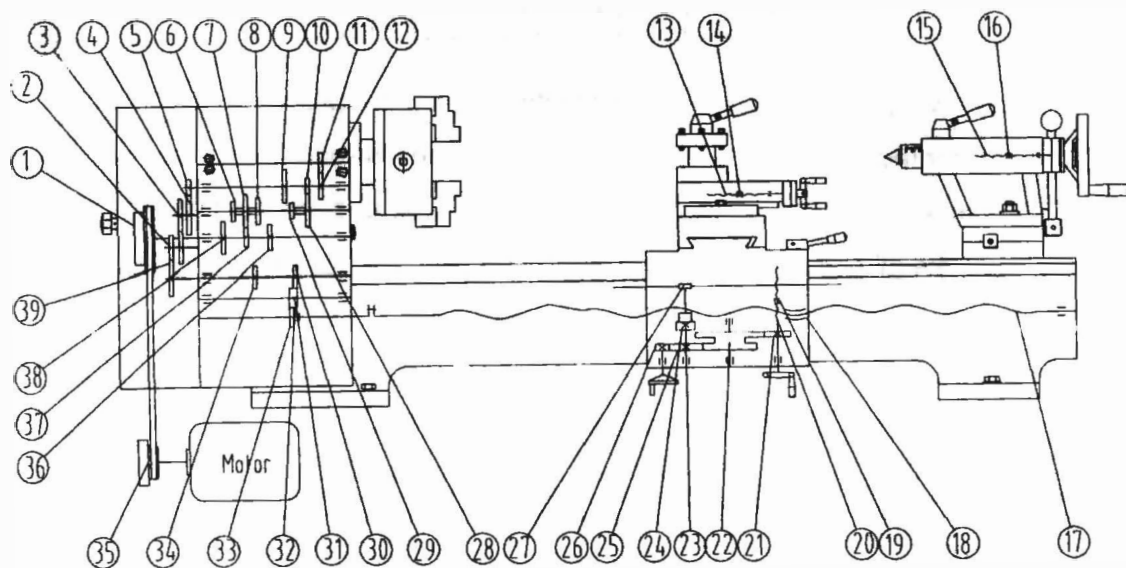


Fig 1. Driving system drawing

- | | |
|---------------------------|------------------|
| 1. Input Pulley | 21. Gear |
| 2. Gear Change | 22. Gear |
| 3. Gear Change | 23. Gear |
| 4. Gear Change | 24. Worm Gear |
| 5. Gear Change | 25. Worm |
| 6. Gear | 26. Gear |
| 7. Gear | 27. Gear |
| 8. Gear | 28. Gear |
| 9. Gear | 29. Gear |
| 10. Gear | 30. Gear |
| 11. Spindle Gear | 31. Gear |
| 12. Gear | 32. Gear |
| 13. Tool Post Lead Screw | 33. Gear |
| 14. Tool Post Nut | 34. Gear |
| 15. Tail Stock Lead Screw | 35. Motor Pulley |
| 16. Tool Post Nut | 36. Gear |
| 17. Longitudinal Screw | 37. Gear |
| 18. Longitudinal Nut | 38. Gear |
| 19. Cross Nut | 39. Gear |
| 20. Cross Lead Screw | |

Lifting & Installation

It is recommended that this machine is lifted by the use of a crane or hoisting mechanism as it is very heavy.

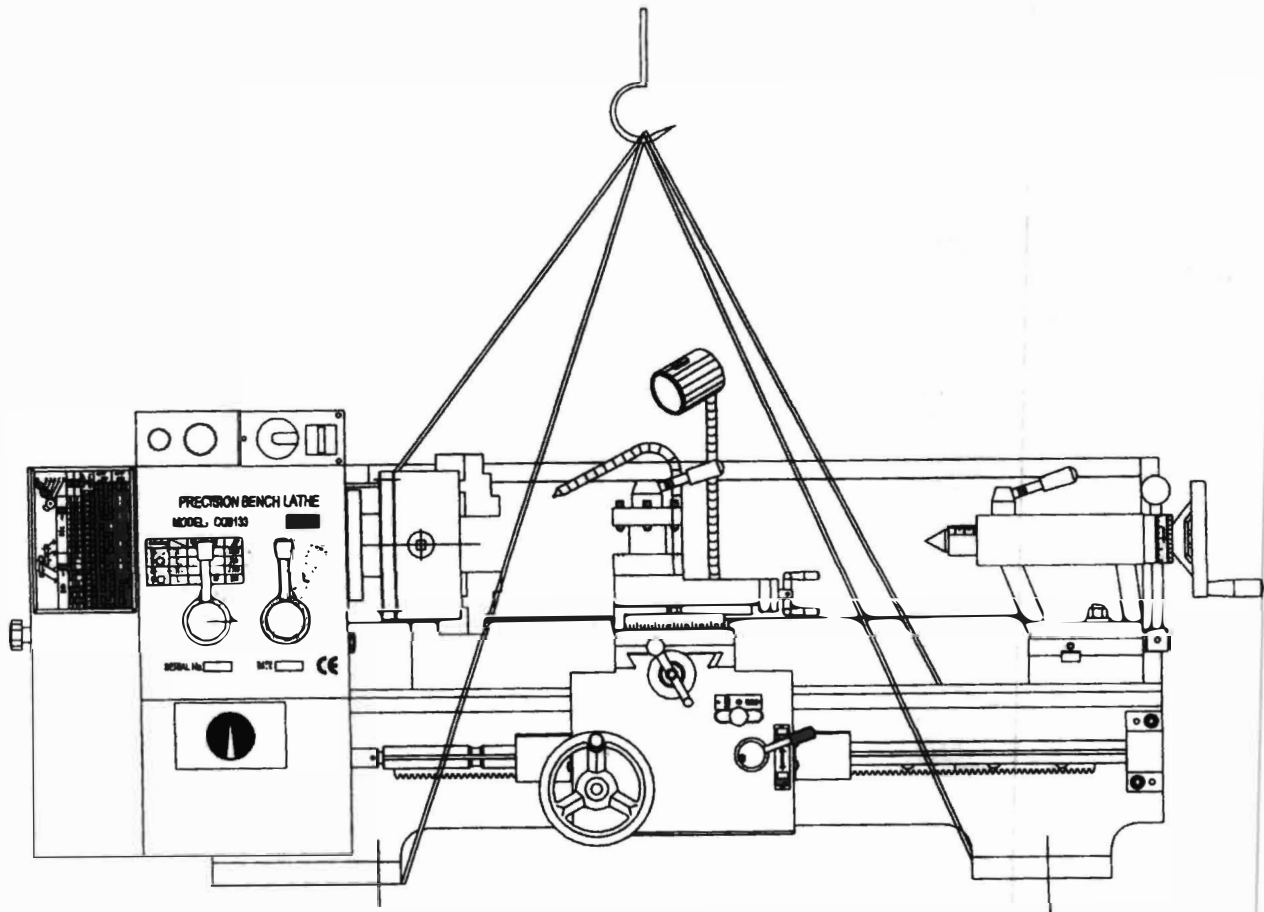


Fig 2. Lifting drawing

Lifting & Installation cont

Please refer to figure 3 when installing this machine. As this lathe is for the most part pre-assembled at the factory, there is not a great deal of assembly for the end user.

Line up the four bolt holes with the stand and carefully place the lathe on the stand.

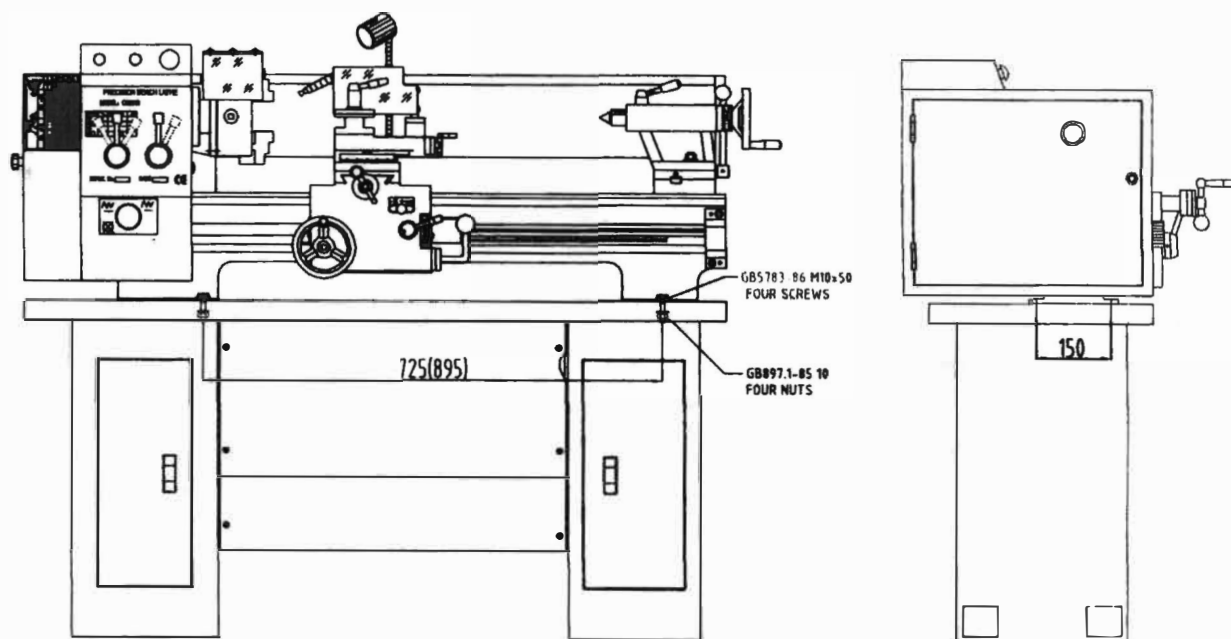


Fig 3. Installation drawing.

After installation, be sure to clean the antiseptic coat (used to preserve and protect during shipping) off the guide carriage, tail stock, change gear and pulley with a clean cloth and non-corrosive cleaner.

Lubrication Positions

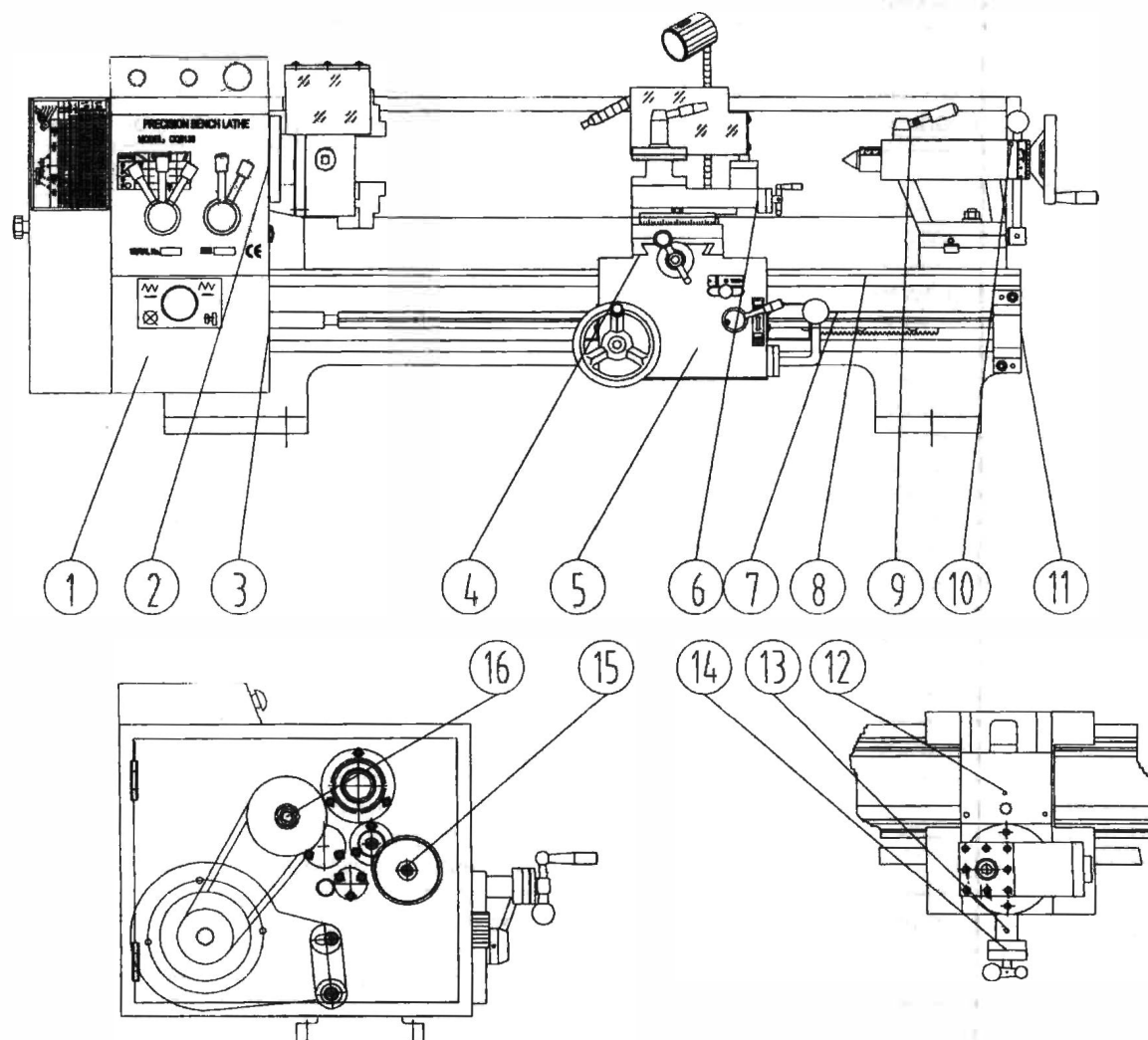


Fig 4. Lubrication positions drawing.

Please refer to the Lubrication chart on the following page in order to properly lubricate and maintain your Lathe. Proper lubrication of any tools, especially Metal Lathes should not be ignored.

Lubrication Positions Cont.

Attached List 1: Lubrication Positions Li

No.	Lubrication Position	Located part	Located part Methods	Lubrication Oil	Lubrication Period
1	Gears.bush bearing	Left trestle	Gun oiling	Nachine oil	One year
2	Spindle bearing	Lathe head	Greasing	Grease	1/year
3	Thrust bull bearing	Left trestle	Greasing	Grease	1/year
4	Slide way, lead screw, guide surface	Apron parts	gun oiling	Machine oil	2/days
5	Gears,racks	Apron parts	Greasing	Grease	one month
6	Tool post lead screw,guide surfacr	Tool carriage	gun oiling	Machine oil	2/days
7	Longitudinal lead screw	lead screw	gun oiling	Machine oil	2/days
8	Lathe bed guide	Lathe bed	gun oiling	Machine oil	2/days
9	Tail stock sleeve	Tailstock	gun oiling	Machine oil	2/days
10	Tailstock leads crew bush besring	Tailstock	gun oiling	Machine oil	2/days
11	Bearing pedestal	Lathe bed	gun oiling	Machine oil	2/days
12	Cross nut lead screw	Small carriage	gun oiling	Machine oil	2/days
13	Bearing bush	Small carriage	gun oiling	Machine oil	2/days
14	Thrust bearing	Lead screw pedestal	Greasing	Grease	6/s year
15	Change gear shaft	Compound box	gun oiling	Machine oil	2/s year
16	Bearing	Input pulley	Greasing	Grease	6/s year

Notes:1.Recommend to use 3#Ca grease

2.Recommend to use 3#Ca grease 20# machine oil

3.The parts lubricated by grease should be cleaned and the machine oil in feed box be changed and renewed up to the center line of the oil indicator regularly

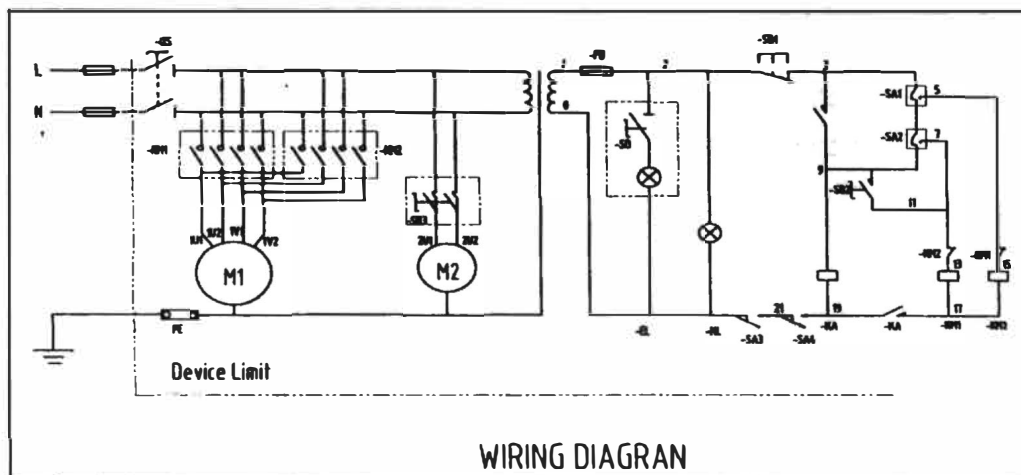


Fig5.Electrical System Drawing

Operating Controls

REFER TO THE DIAGRAM BELOW FOR THE CQ6133 operation controls.

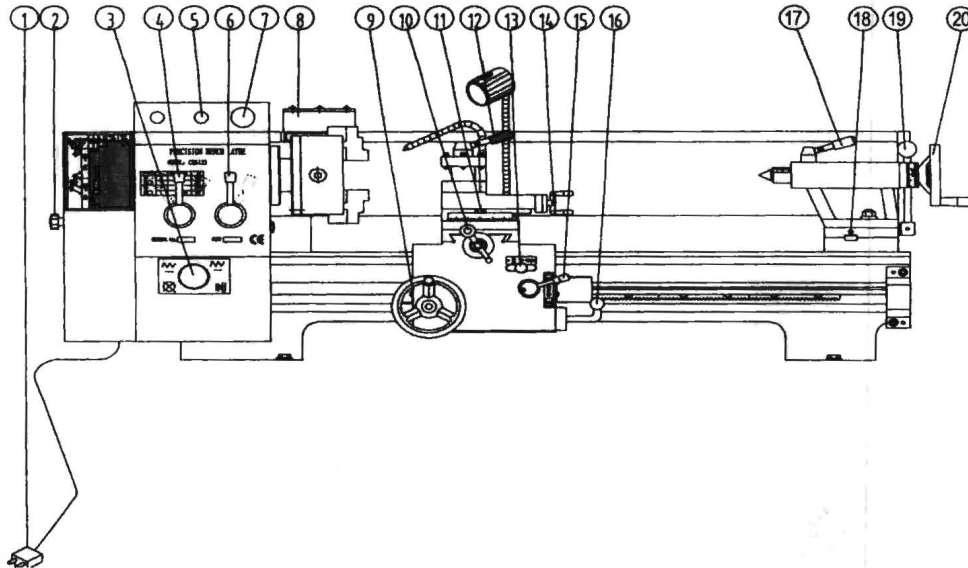
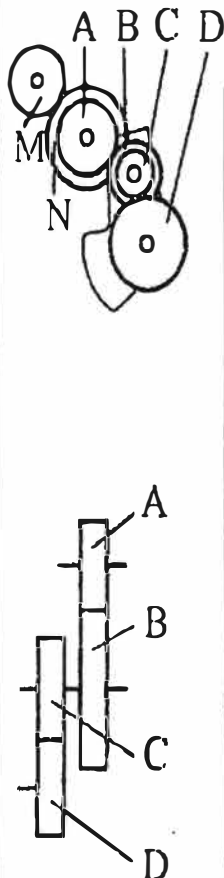






Fig 6.Operation Parts Fig.

1. Power source-plug
2. Transmission Box Cover
3. Forward/Reverse Switch for lead screw-Middle position is Neutral
4. Shift Knob-Gear change
5. Start button
6. Shift Knob-Gear change
7. Stop button
8. Chuck
9. Longitudinal-Feed hand wheel
10. Small Carriage Cross Feed hand wheel
11. Tool Post Swivel Nut
12. Tool Post feed hand wheel
13. Auto Feed for Tool Post-Left, Right, Neutral
14. Tool Carriage hand wheel
15. Carriage Auto-Feed Switch
16. START Forward/Reverse Switch
17. Handle Lock for tailstock center
18. Offset Screw
19. Lever to lock Tailstock
20. Tailstock hand wheel

Threading Chart

Please see the following diagram for reference to cutting threads

		M=24 N=60	M=28 N=35	$\frac{A}{B} \times \frac{C}{D}$				
					M=24 N=60	M=28 N=35	M=24 N=60	M=28 N=35
	18	9	$\frac{32}{28} \times \frac{35}{34}$	0.635	1.270	0.120	0.240	
	20	10	$\frac{30}{27} \times \frac{40}{42}$	0.571	1.142	0.108	0.216	
	22	11	$\frac{32}{30} \times \frac{36}{40}$	0.518	1.036	0.098	0.196	
	24	12	$\frac{30}{34} \times \frac{32}{32}$	0.476	0.952	0.090	0.180	
	26	13	$\frac{32}{35} \times \frac{32}{36}$	0.438	0.876	0.083	0.166	
	28	14	$\frac{30}{27} \times \frac{34}{50}$	0.406	0.812	0.077	0.154	
	30	15	$\frac{35}{32} \times \frac{27}{42}$	0.379	0.758	0.072	0.144	
	32	16	$\frac{35}{34} \times \frac{27}{42}$	0.357	0.714	0.068	0.136	
	36	18	$\frac{30}{34} \times \frac{28}{42}$	0.317	0.634	0.060	0.120	
	40	20	$\frac{30}{32} \times \frac{27}{48}$	0.285	0.570	0.054	0.108	
	0.5	1	$\frac{28}{35} \times \frac{25}{48}$	0.225	0.450	0.430	0.086	
	0.6		$\frac{24}{36} \times \frac{30}{40}$	0.270	0.540	0.051	0.102	
	0.7		$\frac{28}{36} \times \frac{30}{40}$	0.315	0.630	0.060	0.120	
	0.75	1.5	$\frac{25}{40} \times \frac{32}{32}$	0.337	0.674	0.064	0.128	
	0.8		$\frac{28}{32} \times \frac{32}{42}$	0.360	0.720	0.068	0.136	
	1	2	$\frac{30}{32} \times \frac{32}{36}$	0.450	0.900	0.085	0.170	
	1.25	2.5	$\frac{30}{32} \times \frac{40}{36}$	0.560	1.124	0.106	0.212	
	1.5	3	$\frac{30}{36} \times \frac{42}{28}$	0.674	1.348	0.128	0.256	
	1.75	3.5	$\frac{35}{30} \times \frac{40}{32}$	0.787	1.574	0.149	0.298	
	2	4	$\frac{35}{30} \times \frac{40}{28}$	0.900	1.800	0.170	0.340	

Threading

Cutting threads can be performed by the manual use of the change gears and handle 4&5(refer to Operating Controls)

Grounding Instructions

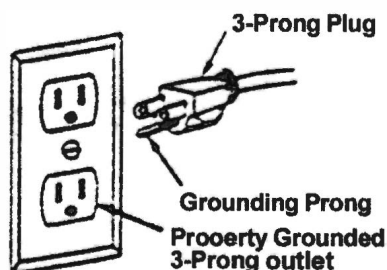
In the event of a malfunction or breakdown, grounding provides the path of least resistance for electrical current and reduces the risk of electrical shock. This tool is equipped with an electrical cord that has an equipment grounding conductor and a grounding plug. The plug **MUST** be plugged into a matching outlet that has been properly installed and grounded in accordance with **ALL** local codes and ordinances.

DO NOT MODIFY THE PLUG PROVIDED. If the provided plug will not fit the electrical outlet, have the proper outlet installed by a qualified licensed electrician.

IMPROPER CONNECTION of the equipment grounding conductor can result in risk of electrical shock. The conductor wire with the green insulation (with or without yellow stripes) is the equipment-grounding conductor. If repair or replacement of the electrical cord or cord or plug is required, **DO NOT** connect the equipment grounding conductor to a live terminal.

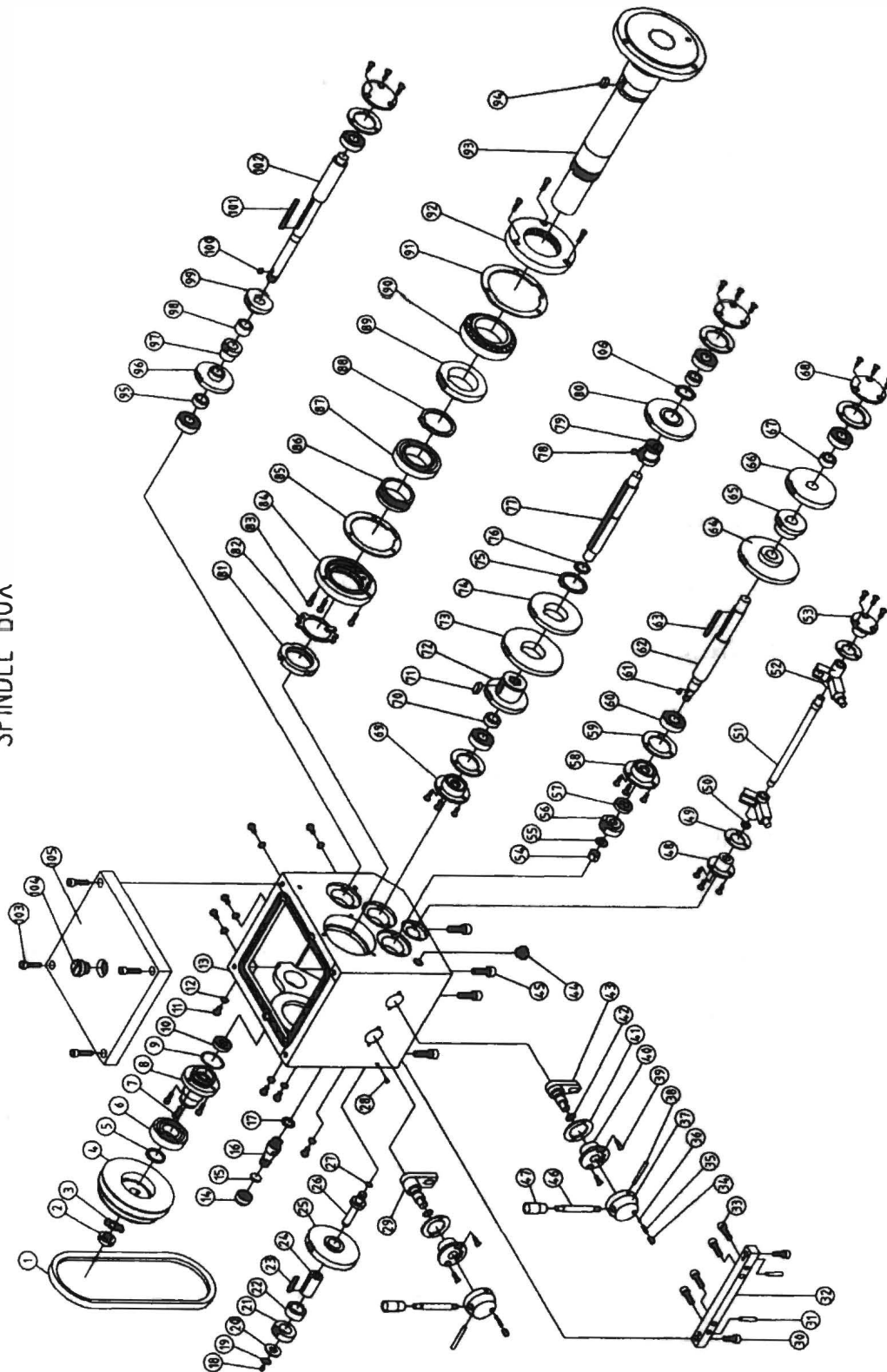
If in doubt about these instructions consult a qualified, licensed electrician.

USE ONLY A THREE-WIRE EXTENSION CORD with a 3-prong grounding plug and three-hole receptacles that accept the tool's plugs as shown.



Parts Diagram-Lathe Headstock

SPINDLE BOX



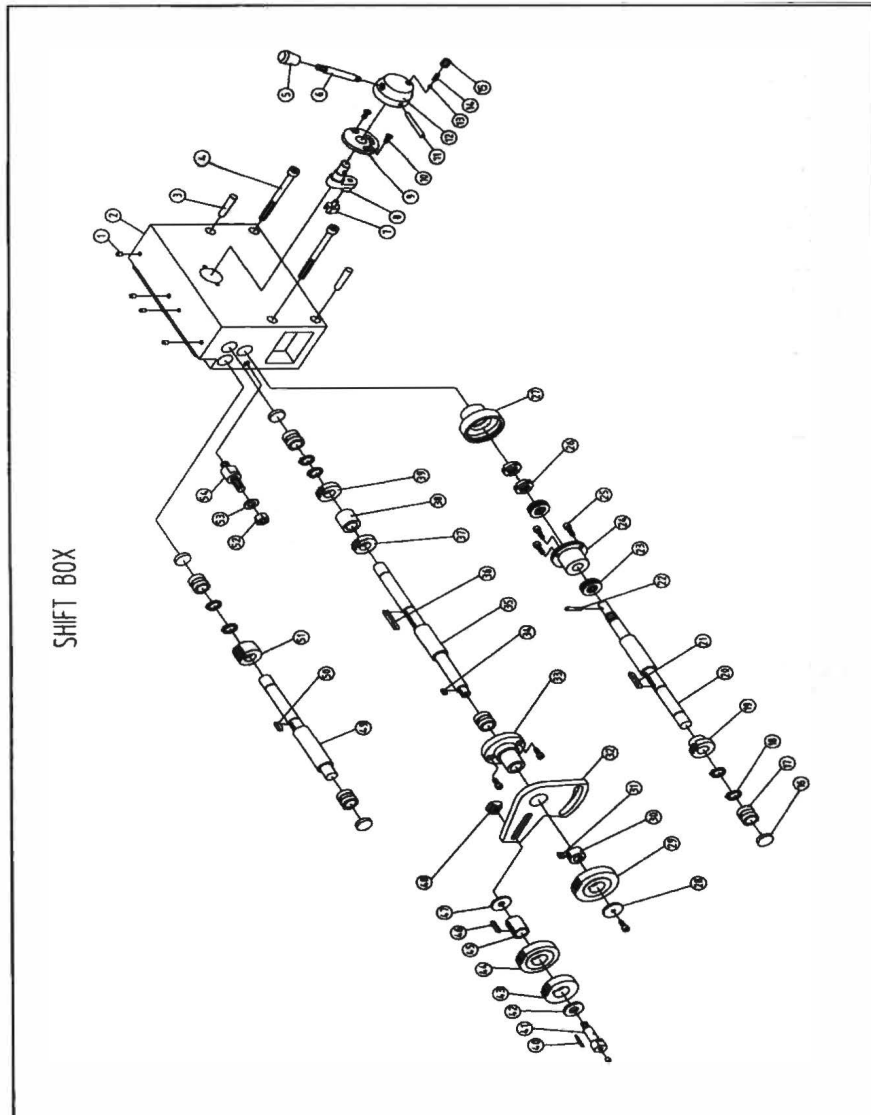
Parts Listing-Lathe Headstock

	Parts No.	Description
1	V710 GB/T1171-1986	V-belt type 686
2	M16*1.5 GB/T812-1988	Spanner nut
3	16 GB/T858-1988	Lock washer for circular nut
4	CQ6133-02-031	Spindle pulley
5	30 GB/T894.1-1986	Circlips for shaft-type A
6	6206/P6 GB/T276-1994	Taper roller bearing
7	M5*16 GB/T77-1985	Hexagon socket head screw
8	CQ6133-02-030	Pulley seat
9	35.5*2.65 GB/T3452.1-1992	O-seal ring
10	FB016030 GB/T13871-1992	Felt collar
11	M6*8 GB/T818-1985	Crossrecessed pan head screws
12	6 GB/T97.1-1985	Plain washers
13	CQ6133-02-005	Lathe head
14	CQ6133-02-021	Nut
15	CQ6133-02-022	Felt collar
16	CQ6133-02-020	Oil Screw
17	CQ6133-02-058	Washer
18	6 GB/T7940.4-1995	Oil cup
19	11 GB/T894.1-1986	Circlips for shaft-type A
20	CQ6133-02-040	collar
21	CQ6133-02-039	Change Gear
22	CQ6133-02-042	Sleeve spacer
23	A5*36 GB/T1096-1994	Plain parallel key
24	CQ6133-02-041	Sleeve
25	CQ6133-02-038	Change Gear
26	CQ6133-02-043	Shaft
27	9*1.8 GB/T3452.1-1992	O-seal ring
28	M5*8 GB/T71-1985	Screw
29	CQ6133-02-052	Block
30	M8*20 GB/T77-1985	Hexagon socket head screw
31	A6*30 GB/T117-1986	Taper pins
32	CQ6133-02-019	Adjust block
33	M8*25 GB/T77-1985	Hexagon socket head screw
34	M8*10 GB/T77-1985	Set screws with cone point
35	0.8*5*20 GB/T2089	Spring
36	6 GB/T308-1989	Steel ball
37	CQ6133-02-004	Handle seat
38	GB/T117-1986	Taper pins
39	M5*16 GB/T819-1985	Screw
40	CQ6133-02-009	Locating sleeve
41	CQ6133-02-057	Washer
42	11.2*2.65 GB/T3452.1-1992	O-seal ring

43	CQ6133-02-055	External snap ring
44	A10 JB/T9741.2	Oil Sight
45	M10*30 GB/T77-1985	Hexagon socket head screw
46	CQ6133-02-003	Handle lever
47	AM8*40 JB/T7271.3-1994	Knob
48	CQ6133-02-050	Sleeve
49	CQ6133-02-018	Washer
50	12 GB/T894.1-1986	Circlips for shaft-type A
51	CQ6133-02-053	Shifting fork shaft
52	CQ6133-02-055	Right shifting fork
53	CQ6133-02-010	Sleeve
54	M10 GB/T41-1986	Nut
55	10 GB/T97.1-1985	Plain washers
56	CQ6133-02-033	Gear change
57	FB016030 GB/T13871-1992	Felt collar
58	CQ6133-02-034	Sleeve
59	CQ6133-02-018	Washer
60	6203/P6 GB/T276-1994	Taper roller bearing
61	A4*10 GB/T1096-1994	Plain parallel key
62	CQ6133-02-044	Output shaft
63	A5*60 GB/T1096-1994	Plain parallel key
64	CQ6133-02-045	Gear
65	CQ6133-02-046	Gear
66	CQ6133-02-048	Gear
67	CQ6133-02-049	Sleeve spacer
68	CQ6133-02-023	Sleeve
69	CQ6133-02-032	Sleeve
70	CQ6133-02-011	Sleeve spacer
71	A5*22 GB/T1096-1994	Plain parallel key
72	CQ6133-02-017	Gear
73	CQ6133-02-016	Gear
74	CQ6133-02-015	Gear
75	42 GB/T894.1-1986	Circlips for shaft-type A
76	22 GB/T894.1-1986	Circlips for shaft-type A
77	CQ6133-02-014	Middle shaft
78	6*4*10 GB/T1566-1990	Thin flat key
79	CQ6133-02-012	Gear
80	CQ6133-02-013	Gear
81	M50*1.5 GB/T812-1988	Spanner nut
82	50 GB/T858-1988	Lock washer for circular nut
83	M5*20 GB/T77-1985	Hexagon socket head screw
84	CQ6133-02-036	Sleeve
85	CQ6133-02-037	Pressurize washer
86	CQ6133-02-035	Sleeve spacer
87	32010/P6X GB/T276-1994	Taper roller bearing

88	55 GB/T894.1-1986	Circlips for shaft-type A
89	CQ6133-02-047	Gear
90	32012/P5 GB/T276-1994	Taper roller bearing
91	CQ6133-02-007	Pressurize washer
92	CQ6133-02-006	Mainshaft bearing oil seal
93	CQ6133-02-008	Lathe spindle
94	A8*16 GB/T1096-1994	Plain parallel key
95	CQ6133-02-029	Sleeve spacer
96	CQ6133-02-028	Gear
97	CQ6133-02-026	Sleeve spacer
98	CQ6133-02-027	Gear
99	CQ6133-02-025	Gear
100	A5*10 GB/T1096-1994	Plain parallel key
101	A5*70 GB/T1096-1994	Plain parallel key
102	CQ6133-02-024	Spindle shaft
103	M8*30 GB/T77-1985	Hexagon socket head screw
104	CQ6133-02-002	Oil port plug
105	CQ6133-02-001	Transmission cover
106	28 GB/T894.1-1986	Circlips for shaft-type A

Parts Diagram – Lathe Trestle



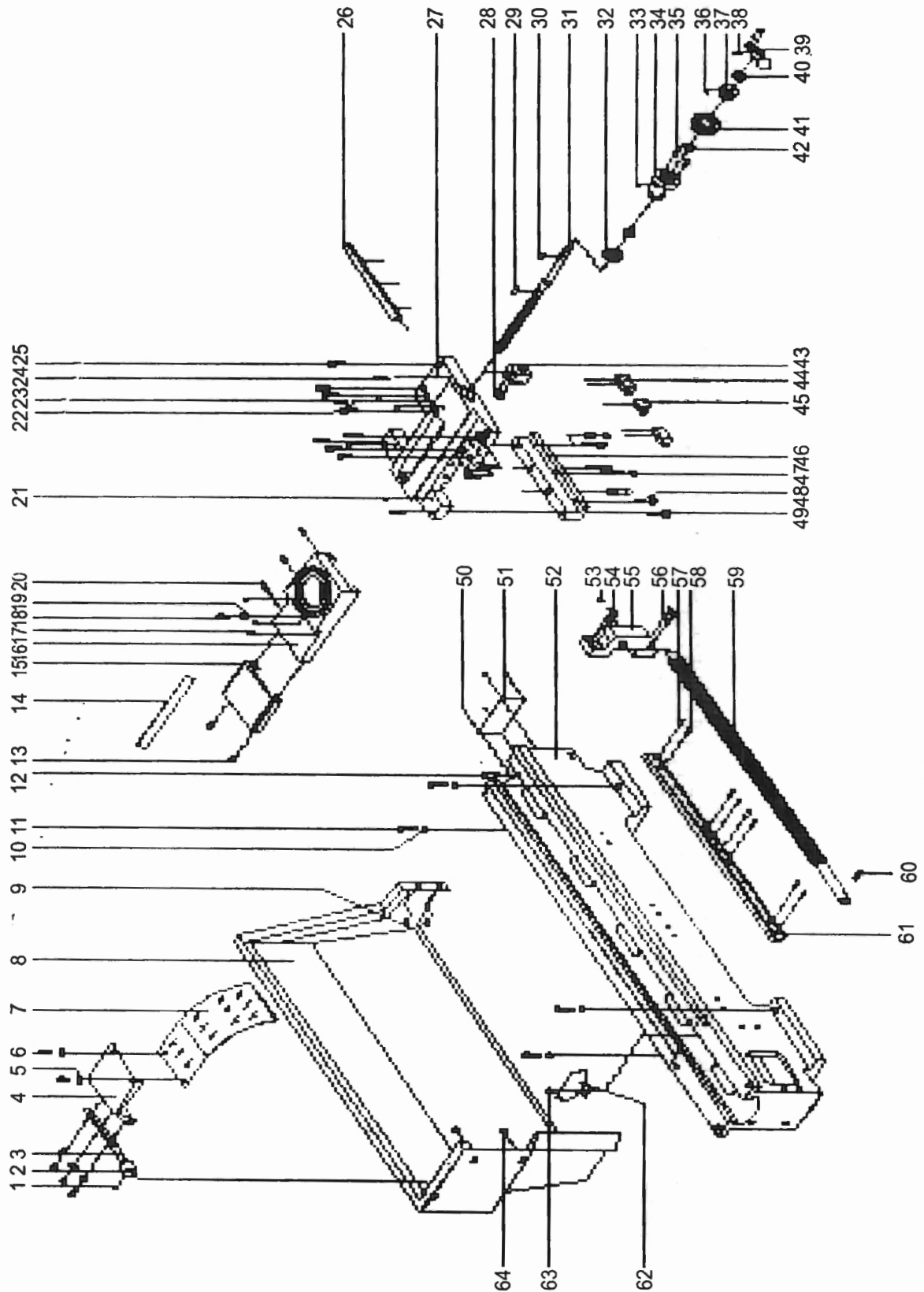
Parts List ing– Lathe Trestle

No.	Parts No.	Description
1	6 GB/T7940.4-1995	Oil cup
2	CQ6133-03-012	Apron body
3	8*40 GB/T118-1986	Taper pins
4	M8*100 GB/T70-1985	Hexagon socket head screw
5	AM8*25JB/T7271.3-1994	Handle sleeve B-plastic
6	CQ6133-04-019	Handle seat
7	CQ6133-03-027	Right shifting fork
8	CQ6133-03-028	shaft
9	CQ6133-03-001	Base

10	M5*12 GB/T819-1985	screw
11	5*50 GB/T117-1986	Taper pins
12	CQ6133-02-004	Handle seat
13	6.5 GB/T308-1989	Steel ball
14	0.8*5*16 GB/T2089-1985	Spring
15	M8*10 GB/T77-1985	screw
16	CQ6133-03-014	Cover
17	CQ6133-03-013	Sleeve
18	16 GB/T894.1-1986	Circlips for shaft-type A
19	CQ6133-03-024	Gear
20	CQ6133-03-022	shaft
21	5*32 GB/T1096-1994	Key
22	4*24 GB/T117-1986	Taper pins
23	51102 GB/T301-1995	Taper roller bearing
24	CQ6133-03-015	Base
25	M5*12 GB/T70-1985	Hexagon socket head screw
26	M14*1.5 GB/T810-1988	Spanner nut
27	CQ6133-03-016	Sleeve
28	CQ6133-03-003	Sleeve
29	CQ6133-Ý¼401-011	Gear
30	CQ6133-03-002	Sleeve spacer
31	5*10 GB/T1096-1994	Key
32	CQ6133-03-026	Change gear plate
33	CQ6133-03-008	Sleeve
34	4*10 GB/T1096-1994	Key
35	CQ6133-03-020	shaft
36	5*40 GB/T1096-1994	Key
37	CQ6133-03-009	Gear
38	CQ6133-03-010	Sleeve spacer
39	CQ6133-03-011	Gear
40	¥Ö2.5*24	shaft
41	CQ6133-03-004	shaft
42	CQ6133-03-005	Sleeve
43	CQ6133-Ý¼401-006	Gear
44	CQ6133-Ý¼401-010	Gear
45	CQ6133-03-029	Sleeve
46	5*22 GB/T1096-1994	Key
47	CQ6133-03-006	Sleeve
48	CQ6133-03-007	T Nut
49	CQ6133-03-021	shaft
50	5*16GB/T1096-1994	Key
51	CQ6133-03-023	Gear
52	M10 GB/T41-1986	Nut
53	10 GB/T97.1-1985	Plain washers
54	CQ6133-03-025	screw

Parts Diagram – Lathe Bed

Parts Diagram-Lathe Bed

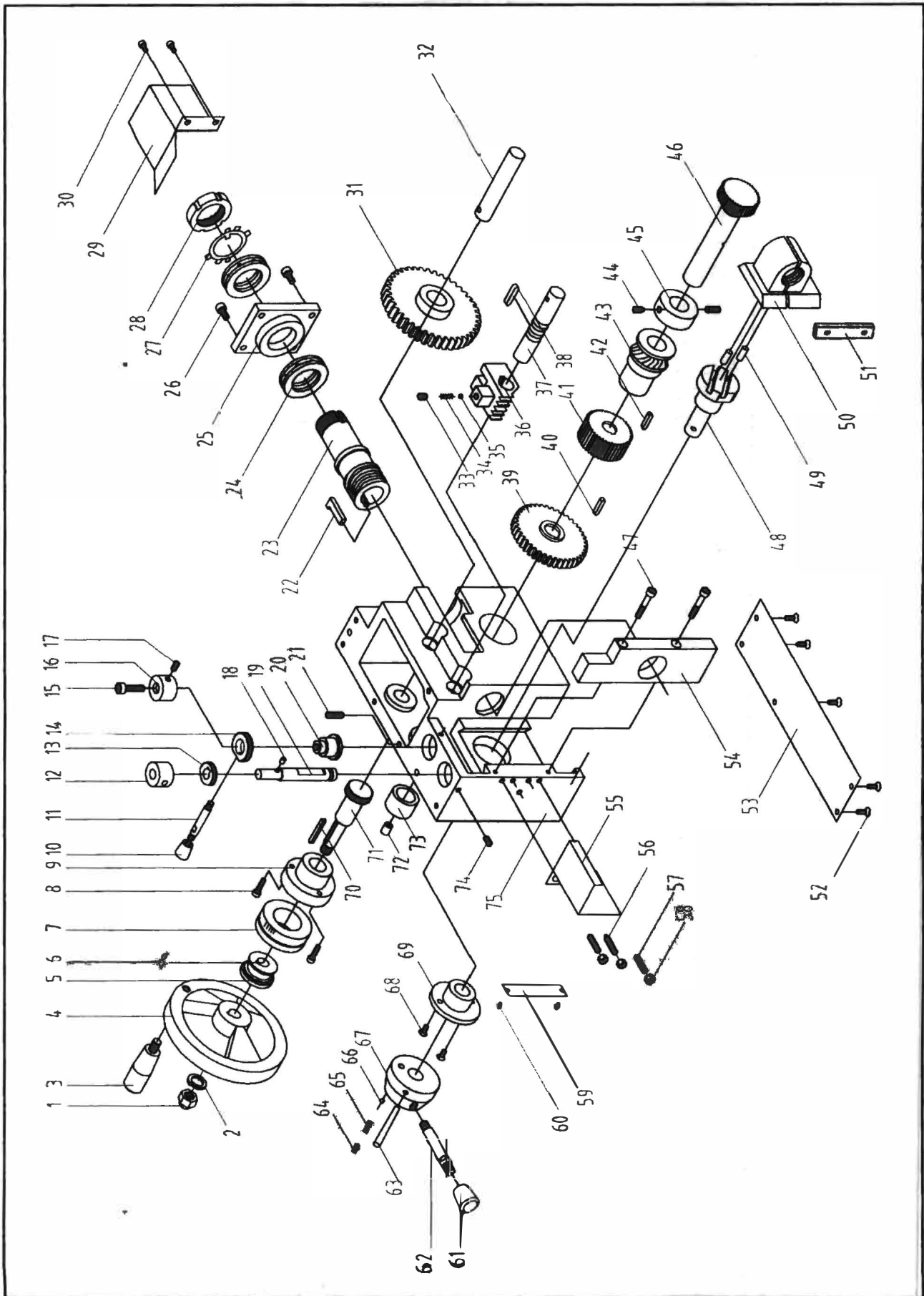


Parts Listing – Lathe Bed

	Parts No.	Description
1	M6*12 GB/T77-1985	Hexagon socket head screw
2	CQ6133-02T01-002	Cam Sleeve
3	CQ6133-02T01-001	Switch Bar
4	CQ6133-02T01-004	Connecting Plate
5	5 GB/T96-1985	Plain washers
6	M5*12 GB/T818-1985	Screw
7	CQ6133-02T01-003	Shield
8	CQ6133-01-014	Shield
9	M6*10 GB/T77-1985	Hexagon socket head screw
10	10 GB/T96-1985	Plain washers
11	M10*50 GB	Hexagon head screw
12	CQ6133-01-018	Pin
13	M8*30 GB/T77-1985	Hexagon socket head screw
14	CQ6133-05-003	Chock
15	CQ6133-05-005	Shield
16	CQ6133-05-002	Middle carriage
17	6 GB/T7940.4-1995	Oil cup
18	M6*12 GB/T77-1985	Hexagon socket head screw
19	CQ6133-05-009	Washer
20	M6*20 GB1779-1985	Set screws with cone point
21	6 GB/T7940.4-1995	Oil cup
22	6 GB/T97.1-1985	Plain washers
23	M6*40 GB5782-1986	Hexagon head bolts
24	6*40 GB/T117-1986	Taper pins
25	M6*35 GB/T77-1985	Hexagon socket head screw
26	CQ6133-05-007	Chock
27	CQ6133-05-001	Carriage
28	M5*14 GB/T77-1985	Hexagon socket head screw
29	4*16 GB/T1096-1994	Plain parallel key
30	4*16 GB/T1096-1994	Plain parallel key
31	CQ6133-05-010	Cross feed screw rod
32	CQ6133-05-013	Gear
33	6 GB/T7940.4-1995	Oil cup
34	CQ6133-05-014	Cross feed screw seat
35	M6*60 GB/T77-1985	Hexagon socket head screw
36	CQ6133-04-021	Spring lamination
37	CQ6133-04-022	Dial sleeve
38	4*25 GB/T117-1986	Taper pins
39	B12*40 GB4141.9-84	Handles with sleeve
40	12 GB/T97.1-1985	Plain washers
41	CQ6133-05-015	Dial
42	51101 GB/T301-1995	Rolling bearing

43	CQ6133-05-008	Cross nut
44	CQ6133-05-011	Chain up block
45	CQ6133-05-004	Forward board
46	CQ6133-05-006	Behind board
47	M8 GB/T41-1985	Hexagon nuts
48	M8*30 GB1779-1985	Set screws with cone point
49	M8*45 GB/T77-1985	Hexagon socket head screw
50	2.5*5 GB/T96-1986	ii
51	CQ6133-01-017	Table
52	CQ6133-01-011	Bed
53	6 GB/T7940.4-1995	Oil cup
54	M8*25 GB/T77-1985	Hexagon socket head screw
55	CQ6133-01-015	Right pedestal
56	4*24 GB/T117-1986	Taper pins
57	6*35 GB/T117-1986	Taper pins
58	M8*20 GB/T77-1985	Hexagon socket head screw
59	CQ6133-01-009	Longitudinal feed screw
60	6*35 GB/T117-1986	Taper pins
61	CQ6133-01-012	Racks
62	CQ6133-01-019	Shield
63	M6*8 GB/T77-1985	Hexagon socket head screw
64	M6*8 GB/T77-1985	Hexagon socket head screw

Parts Diagram – Lathe Apron

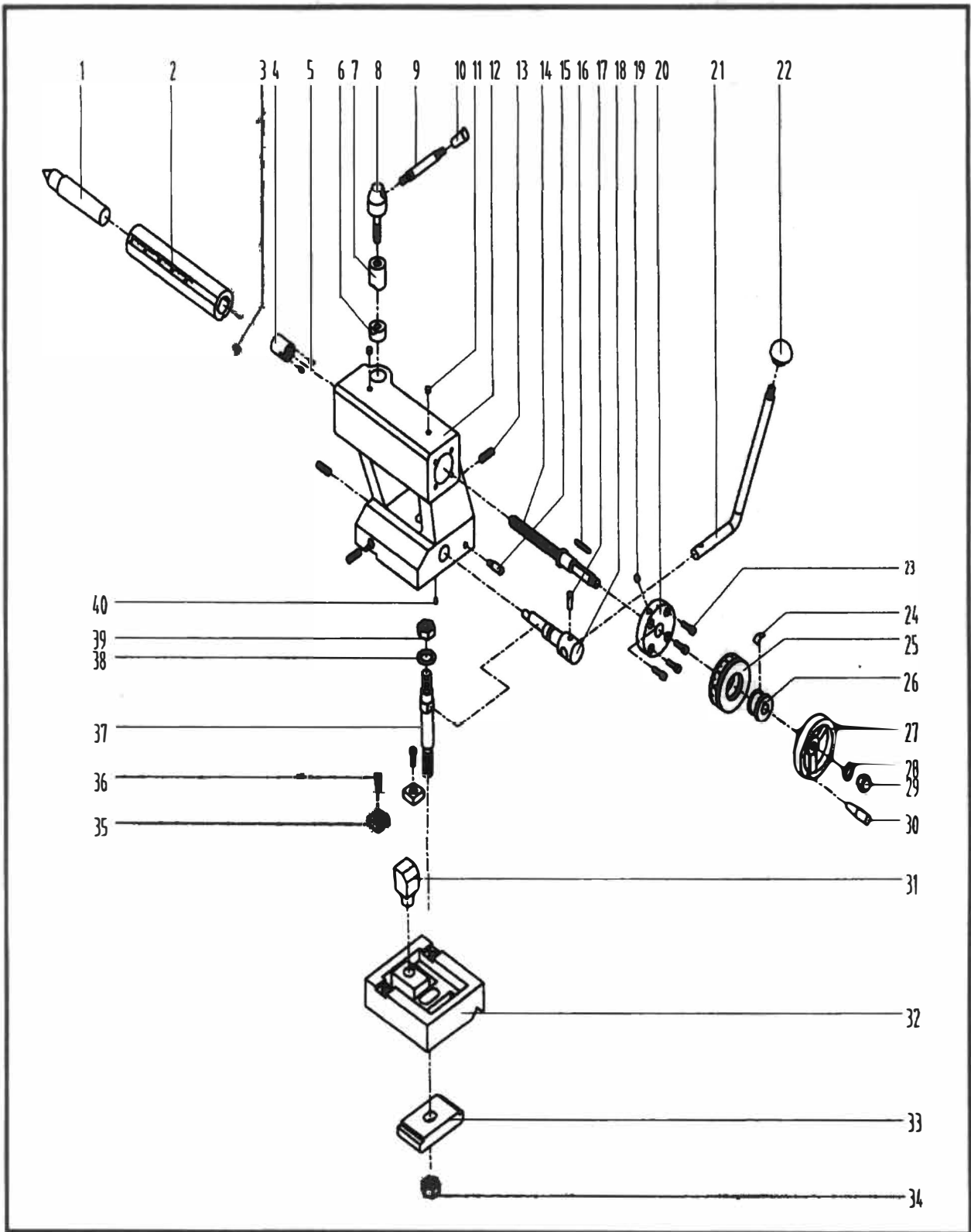


Parts Listing – Lathe Apron

NO.	Parts No.	Description
1	M10 GB923-1988	Domed cap nuts
2	10 GB/T923-1976	Spring washer
3	JB/T7270.4-1994	Sleeve
4	B12*125 JB/T7273.3-1994	Hand wheel
5	CQ6133-04-022	Sleeve
6	CQ6133-04-021	Spring lamination
7	CQ6133-04-020	Dial
8	M4*20 GB70-85	Hexagon socket head screw
9	CQ6133-04-023	Flange sleeve
10	AM8*25JB/T7271.3-1994	Handle sleeve B-plastic
11	CQ6133-04-019	Handle lever
12	CQ6133-04-006	Sleeve
13	CQ6133-04-007	Gear
14	CQ6133-04-005	Middle gear
15	M6*25 GB70-85	Hexagon socket head screw
16	CQ6133-04-003	Sleeve
17	M5*10 GB/T78-1985	Set screws with cone point
18	4*6 GB/T119-1986	Plain parallel
19	CQ6133-04-008	Axis
20	CQ6133-04-004	Shaft
21	M6*20 GB/T78-1985	Screws
22	CQ6133-04-009	Geet in to plain parallel
23	CQ6133-04-025	Worm shaft
24	GB/T301-1995	Thrust ball bearing
25	CQ6133-04-010	Worm shaft
26	M5*12 GB/T70-1985	Hexagon socket head screw
27	30 GB/T858-1988	Lock washer
28	M30*1.5 GB/T810-1988	Round nut
29	CQ6133-01-010	Safe shield
30	M5*10 GB/T70-1985	Hexagon socket head screw
31	CQ6133-04-026	Gear
32	CQ6133-04-011	Slippage shaft
33	M6*8 GB/T77-1985	Screws
34	0.8*4*12 GB/T2089-1985	Spring
35	φ 5 GB/T308-1989	Steel ball
36	CQ6133-04-002	Shifting fork
37	CQ6133-04-032	Shifting fork shaft
38	5*25 GB/T1096-1979	Plain parallel
39	CQ6133-04-026	Gear
40	6*12 GB/T1096-1994	Plain parallel
41	CQ6133-04-030	Gear
42	GB/T1096-1994	Plain parallel

43	CQ6133-04-029	Worm gear
44	M6*10 GB/T79-1985	Screws
45	CQ6133-04-028	Sleeve
46	CQ6133-04-027	Gear shaft
47	M5*35 GB/T70-1985	Hexagon socket head screw
48	CQ6133-04-016	Shaft
49	6*15 GB/T119-1986	Column pins
50	CQ6133-04-014	Screw nut
51	CQ6133-04-015	Chock
52	M4*8 GB	Screw
53	CQ6133-04-013	Cover
54	CQ6133-04-033	Apron body right cover
55	CQ6133-01-013	Safe shield
56	M5*25 GB/T78-1985	Screw
57	M5 GB/T41-1985	Hexagon nuts
58	M5*22 GB/T75-1985	Screw
59	CQ6133-0-0	Table
60	2.5*5 GB/T96-1986	Rivet
61	M8*25 JB/T7271.3-1994	Handle sleeve B-plastic
62	CQ6133-04-019	Handle lever
63	5*50 GB/T117-1986	Taper pins
64	M8*10 GB/T77-1985	Screw
65	0.8*5*16 GB/T2089-1985	Spring
66	φ 6.5 GB/T308-1989	Steel ball
67	CQ6133-04-018	Handle seat
68	M4*12 GB/T68-1985	Screw
69	CQ6133-04-017	Sleeve
70	4*28 GB/T1096-1994	Drain parallel
71	CQ6133-04-024	Gear shaft
72	GB/T7940.4-1995	Oil cup
73	CQ6133-04-012	Sleeve
74	M5*10 GB/T78-1985	Screw
75	CQ6133-04-001	Apron body

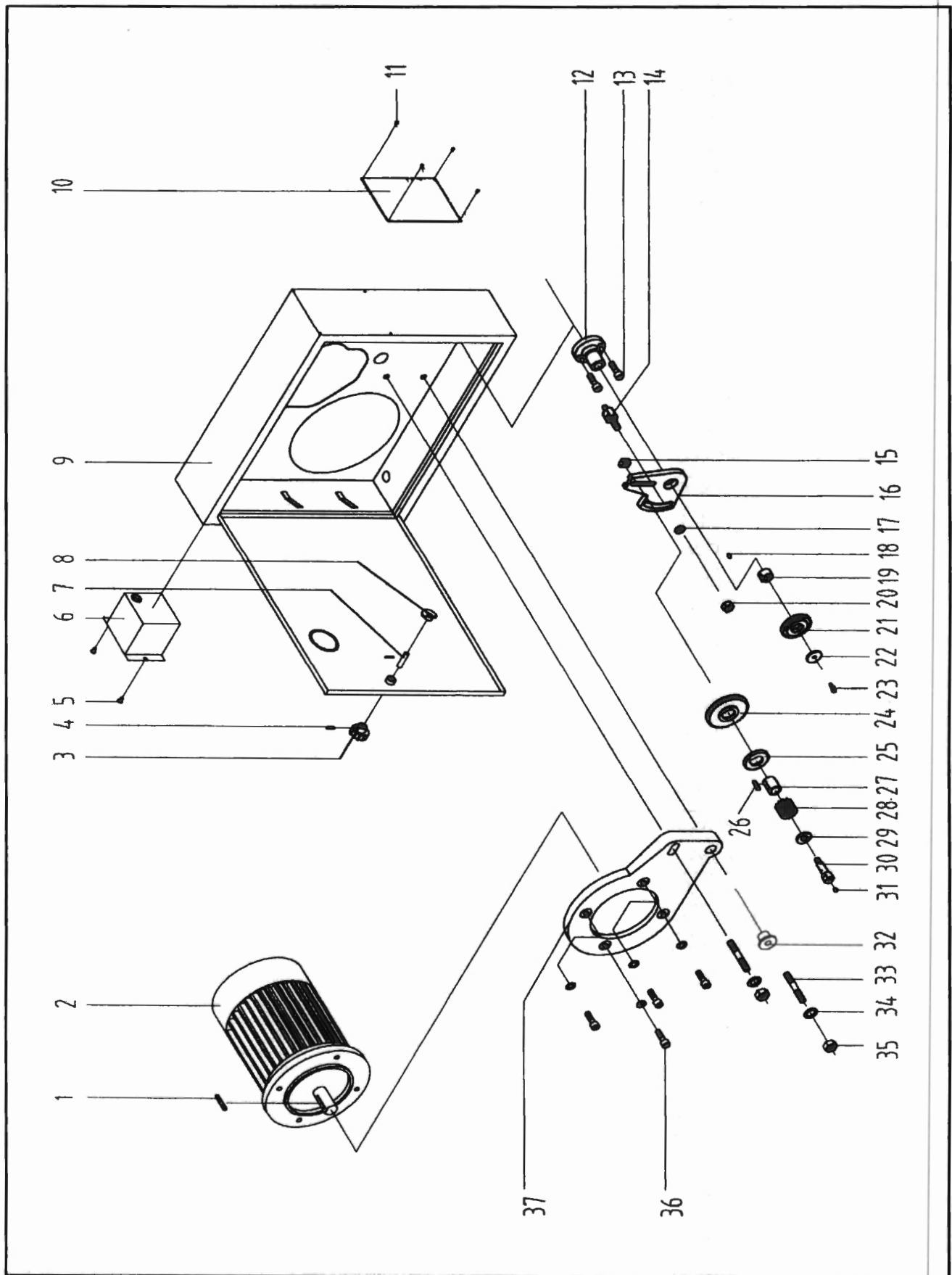
Parts Diagram – Tailstock



Parts Listing –Tailstock

No.	Parts No.	Description
1	3#	Roolling Center
2	CQ6133-06-002	Tailstock center sleeve
3	CQ6133-06-021	T-Key
4	CQ6133-06-004	Tailstock Nuts
5	M6*10 GB/T78-1985	Set screws with cone point
6	CQ6133-06-008	Locking nuts
7	CQ6133-06-008	Locking Sleeve
8	CQ6133-06-001	Handle seat
9	CQ6133-04-019	Handle seat
10	M25*8 JB/T7271.3-1994	Long sleeve knob
11	6 GB/T7940.4-1995	Oil cup
12	CQ6133-06A-007	Tailstock
13	M10*40 GB/T77-1985	Set screws with cone point
14	CQ6133-06-003	Tailstock screw stem
15	CQ6133-06-011	Pin
16	4*28 GB/T1096-1994	Plain parallel key
17	8*25 GB/T117-1986	Taper pins
18	CQ6133-06-001	Shaft
19	6 GB/T7940.4-1995	Oil cup
20	CQ6133-06-005	Sleeve
21	CQ6133-06A-009	Handle lever
22	M10*32 JB/T7271.1-1994	Handke ball
23	M5*20 GB/T70-1985	Hexagon socket head screw
24	CQ6133-04-021	Spring lamination
25	CQ6133-06-006	Dial
26	CQ6133-04-022	Sleeve
27	B12*250 JB/7273.3-1994	Hand wheel
28	12 GB/T97.1-1985	Plain washers
29	M10 GB/T923-1976	Domed cap nuts
30	B12*250 JB/7273.3-1994	Handles with sleeve
31	CQ6133-06-018	Setting Base
32	CA6133-06A-017	Tailstock carriage
33	CA6133-06-019	Chock
34	M12 GB/T41-1985	Hexagon thin nuts
35	CQW6133-06-012	Setting Block
36	M5*16 GB/T70-1985	Hexagon socket head screw
37	CQ6133-06A-020	Pull pole set
38	12 GB/T97.1-1985	Plain washers
39	M12 GB/T41-1985	Hexagon nuts
40	M6*14 GB1779-1985	Set screws with cone point

Parts Diagram – Compound Box



Parts Listing – Compound Box

No.	Parts No.	Description
1	A8*30 GB/T1096-1994	Plain parallel key
2	Y90S-4 B5 1.1KW	220V Mount,50HZ
3	8*32 JB/T7274.4-1994	Start-grip knob
4	3*14 GB/T879-1986	Taper pins
5	M5*8 GB/T819-1985	Screw
6	CQ6133-01-019	Safe box
7	CQ6133-01-005	Shaft
8	CQ6133-01-003	Door-knob
9	CQ6133-01-001/002	Compound box
10		Thread table
11	2.5*5 GB/T827-1986	Rivet;j
12	CQ6133-03-008	Sleeve
13	M5*12 GB/T70-85	Hexagon socket head screw
14	CQ6133-03-025	Screw
15	CQ6133-03-007	T-nut
16	CQ6133-03-026	Change gear plate
17	10 GB/T97.1-1985	Plain washers
18	M10 GB/T41-1985	Hexagon thin nuts
19	CQ6133-03-002	Sleeve
20	CQ6133-Ý¼01-011	Gear
21	CQ6133-03-003	Ring C
22	M5*10 GB/T70-1985	Hexagon socket head screw
23	5*10 GB/T1096-1994	Plain parallel key
24	CQ6133-Ý¼01-010	Gear
25	CQ6133-Ý¼01-006	Gear
26	5*22 GB/T1096-1994	Plain parallel key
27	CQ6133-03-029	Sleeve
28	¢ 2.5*24	Roller;j
29	CQ6133-03-005	Sleeve
30	CQ6133-03-004	Shaft
31	6 GB/T7940.4-1995	Oil cup
32	CQ6133-01-007	Sleeve
33	M10*52 GB/T898-1988	Screw
34	10 GB/T97.1-1985	Plain washers
35	M10 GB/T41-1985	Hexagon nuts
36	M8*20 GB/T70-1985	Hexagon socket head screw
37	CQ6133-013-008	Motor mount plate