

QUOTATION

Mode: RT-1325BR	Delivery term: By sea	Lead time: 9-12 working days
Price: 6150 USD FOB Qingdao		
Payment terms:	T/T in advance	
Package: Standard wooden box	Quality warranty: 12 months	
Net weight: 1400KG	Gross weight: 1500KG	Machine size: 2200x3200x1700mm Packaging size: 2300x3300x1800mm
Technical details:		
X,Y,Z Working Area	1300x2500x200mm	
Rotary axis	200mm diameter, 2500mm length	
X,Y,Z Traveling Positioning Accuracy	±0.02/300mm	
X,Y,Z Reposition Accuracy	±0.03mm	
Lathe Structure	Steel pipe welded Structure	
X, Y Structure	Taiwan Hiwin square rail and bearings; Helical rack pinion	
Z Structure	Taiwan Hiwin square rail and bearings; TBI ball screw	
Max. Consume power	6.0Kw	
Max.Speed	0-50000mm/min	
Max. Working Speed	0-30000mm/min	
Spindle Power Motor	3.0kw water-cooling spindle	
Spindle Speed	0-24000RPM	
Working Mode	Stepper	
Working Voltage	AC380V 3 phase	
Command	G Code, *uoo, *mmg, *plt	

Main Parts Configuration and Pictures:

#Steel welding machine body
 #1300*2500*200mm XYZ working size
 #4th rotary axis size 200x2500mm, double chucks
 #Vacuum table with T-slot, 5.5KW water cooling vacuum pump
 #3.0 KW water cooled spindle, 0-24000RPM
 #Fuling inverter
 #86BYG stepper motor and Leadshine driver
 #X Y axis Taiwan Hiwin square rail and bearings; Helical rack pinion
 # Z axis Taiwan Hiwin square rail and bearings; TBI ball screw
 #Mach3 4 axis computer control system, USB interface
 #Oil lubrication
 #Auto Z zero tool probe
 #Dust collector



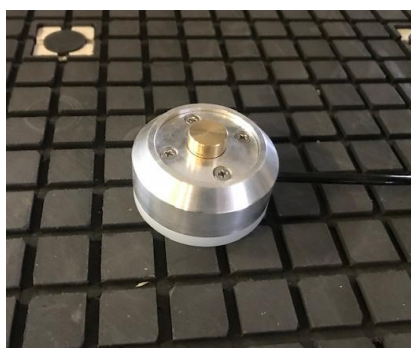
3.0 kw Water Cooling Spindle



Fuling Inverter



5.5KW vacuum pump



Stepper Motor and Driver

Auto Z zero tool probe

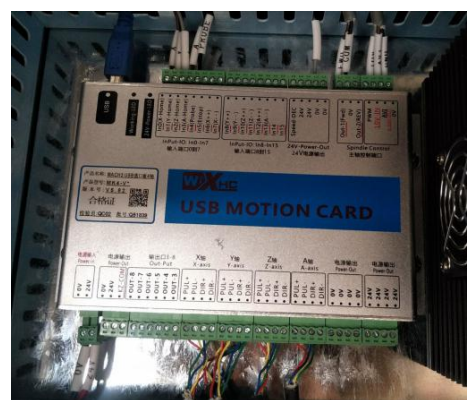
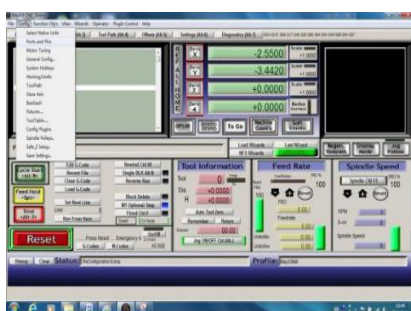
Dust collector



Independent control box

Helical rack and pinion

Oil lubrication



Schneider electronics

Mach3 4 axis control system

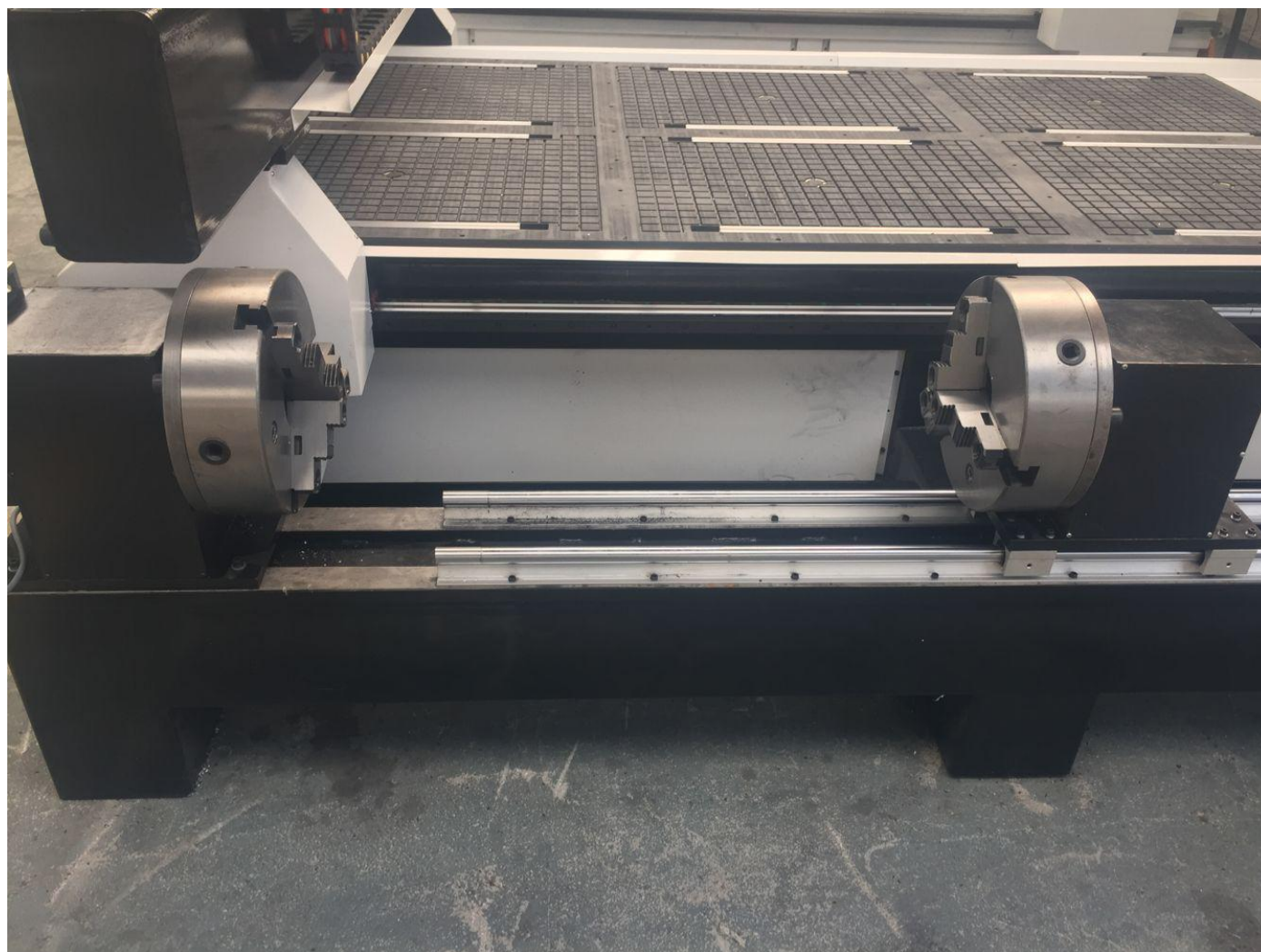
Advanced Mach3 USB motion board

Accessories List:

Signal cable	1
User manual	1
Spindle spanner	2
Tools collets	2
Tool	12
Spare belt	2
Kit box	2
Water pump for spindle cooling	1
Clamping device	6

Machine Pictures:







Package:



Samples:





Optional Function



Mach3 MPG Hand Wheel +\$100



5.5KW +\$400



Servo motor and servo driver +\$700

Address: Qiuja Street, Yangjia Zhuang North Village, Baiyunhu Town, Zhangqiu

Contact: Mac Grady

Email: mac@robotecnc.com / rodeomac@cncncmachine.com

Skype: cncmac01

Viber/Whatsapp: 008615688411463

Wechat/QQ: 676338662