

# Delcam FlexLM Server Setup

You can make a **Local Setup**, when **Delcam FlexLM Server** and all of your Delcam Programs are installed on the same computer  
Or you can make a **Network Setup**, when Delcam **FlexLM Server** is installed on one network computer (SERVER) and all of your Delcam Programs are installed on other networks computers (CLIENTS)

In that case you need to create on every CLIENT's computer an **Environment Variable**:

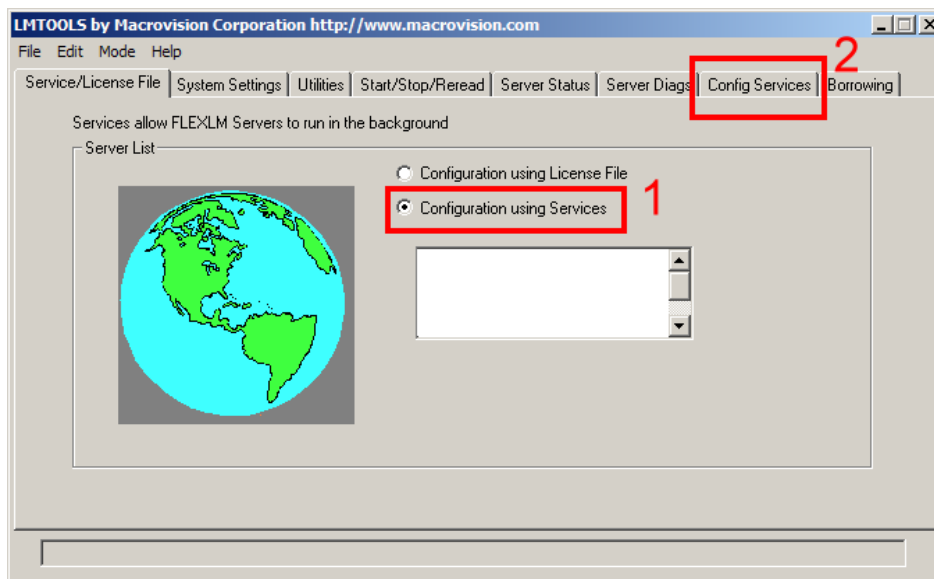
**DELCAM\_LICENSE\_FILE = 1700@ServerComputerName**

Where:

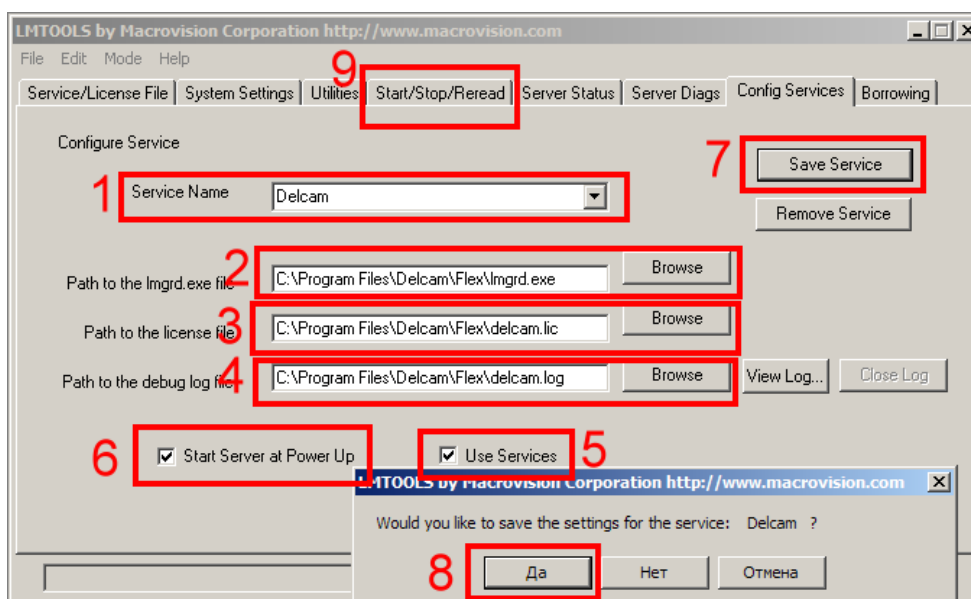
**1700** - is a Port (the same as in delcam.lic ). Port must be opened for connection between Server and CLIENT's computers

**ServerComputerName** – is a real name (or IP-address) of computer with Delcam FlexLM Server running

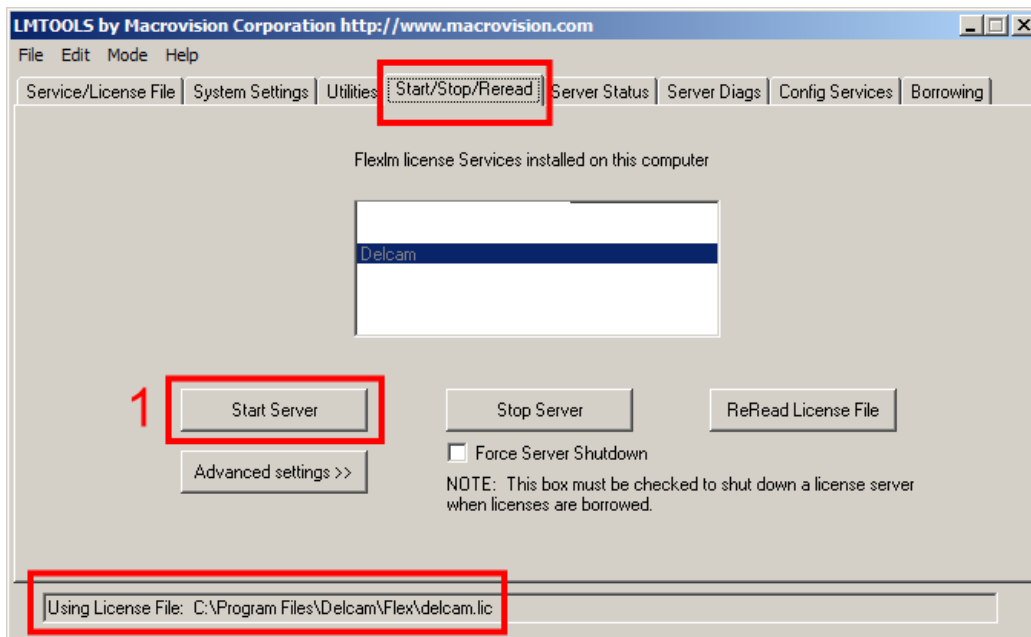
1. Copy folder **Flex** to **C:\Program Files\Delcam\**
2. Run **..\Flex\lmtools.exe**
3. Select **Configuration using Services > Config Services**



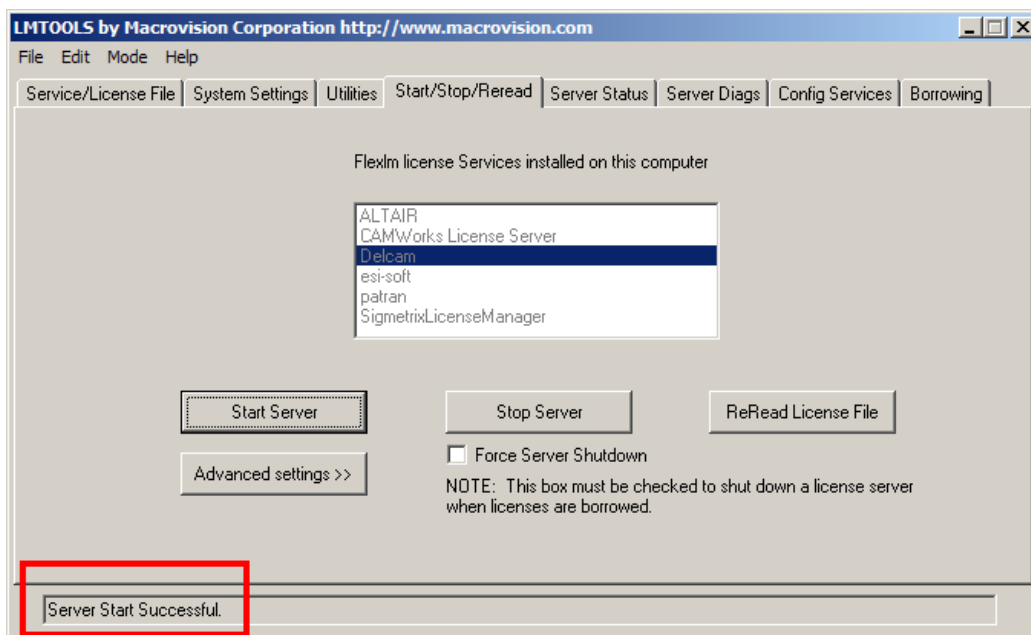
4. For **Service Name** type **Delcam**
5. Browse to files **lmgrd.exe**, **delcam.lic** and **delcam.log**
6. Select **Use Services** and **Start at Power Up**
7. Click **Save Service**
8. Open folder **Start/Stop/ReRead**



9. Click **Start Server**



10. Be sure **that Server Start Successful**



11. Close **Imtools**

12. **Create an Environment Variable:**

**DELCAM\_LICENSE\_FILE = 1700@ServerComputerName**

Where:

**1700** - is a Port (the same as in delcam.lic ). Port must be opened for connection between Server and CLIENT's computers

**ServerComputerName** – is a real name (or IP-address) of computer with Delcam FlexLM Server running.

**You do not need to create this Environment Variable on every CLIENT's computer but only on SERVER computer!**

13. Open **delcam.log**. Be sure that Server is started and there are no warnings about “Unsupported Features”.

Attention! **ServerComputerName** must be a real name (or IP-address) of computer where Delcam FlexLM Server is running



```
20:31:12 (lmgrd) -----
20:31:12 (lmgrd) Please Note:
20:31:12 (lmgrd)
20:31:12 (lmgrd) This log is intended for debug purposes only.
20:31:12 (lmgrd) There are many details in licensing policies
20:31:12 (lmgrd) that are not reported in the information logged
20:31:12 (lmgrd) here, so if you use this log file for any kind
20:31:12 (lmgrd) of usage reporting you will generally produce
20:31:12 (lmgrd) incorrect results.
20:31:12 (lmgrd) -----
20:31:12 (lmgrd)
20:31:12 (lmgrd)
20:31:12 (lmgrd) FLEXlm (v7.0f) started on ServerComputerName (IBM PC) (1/25/2010)
20:31:12 (lmgrd) FLEXlm Copyright 1988-1999, Globetrotter Software, Inc.
20:31:12 (lmgrd) US Patents 5,390,297 and 5,671,412.
20:31:12 (lmgrd) World Wide Web: http://www.globetrotter.com
20:31:12 (lmgrd) License file(s): C:\Program Files\Delcam\Flex\delcam.lic
20:31:12 (lmgrd) lmgrd tcp-port 1700
20:31:12 (lmgrd) Starting vendor daemons ...
20:31:12 (lmgrd) Started delcam (pid 3372)
20:31:15 (delcam) Server started on ServerComputerName for: NAME
20:31:15 (delcam) ADDRESS1 ADDRESS2 ADDRESS3
20:31:15 (delcam) ADDRESS4 ADDRESS5 ADDRESS6
20:31:15 (delcam) AGENT SERVER WORKSTATION
20:31:15 (delcam) DELCAM-3PLUS2 DELCAM-ACISEXPORT DELCAM-ACISIMPORT
20:31:15 (delcam) DELCAM-ADVNC DELCAM-AUTOCADEXPORT DELCAM-CATIAIMPORT
20:31:15 (delcam) DELCAM-CIMATRONIMPORT DELCAM-DRAFT DELCAM-IDEASIMPORT
20:31:15 (delcam) DELCAM-IGESEXPOR DELCAM-IGESIMPORT DELCAM-INVENTORIMPORT
20:31:15 (delcam) DELCAM-MODEL DELCAM-MULTAX DELCAM-NC
20:31:15 (delcam) DELCAM-PARASOLIDEXPORT DELCAM-PARASOLIDIMPORT DELCAM-PARTIMPORT
20:31:15 (delcam) DELCAM-PDFEXPORT DELCAM-PROEIMPORT DELCAM-PSARM
20:31:15 (delcam) DELCAM-RHINOEXPORT DELCAM-RHINOIMPORT DELCAM-SKETCH
20:31:15 (delcam) DELCAM-SOLIDEDGEIMPORT DELCAM-SOLIDWORKSIMPORT DELCAM-SPACECLAIMIMPORT
20:31:15 (delcam) DELCAM-STEPEXPORT DELCAM-STEPIMPORT DELCAM-STLEXPORT
20:31:15 (delcam) DELCAM-U3DEXPORT DELCAM-U3DIMPORT DELCAM-UGIMPORT
20:31:15 (delcam) DELCAM-VDAFEXPORT DELCAM-VDAFIMPORT DUCTPOST-DUCTPOST
20:31:15 (delcam) DUCTPOST-MULTAX DUCTPOST-SPLINE POWERMILL-ADVSM
*
*
*
*
20:31:15 (delcam) DENTCAD-MARYLAND DENTCAD-SIMEDA DENTCAD-WAXUP
20:31:15 (delcam) DELCAM-ADVDIG DELCAM-ASSEMBLY DELCAM-DESIGN
20:31:15 (delcam) DELCAM-ESTIMATOR DELCAM-MOLD DELCAM-SURFACER
20:31:15 (delcam) MILLSHAPE-MILLSHAPE DUCTPOST-PRODUC DELCAM-ADVMODEL
20:31:15 (delcam) DELCAM-ALLMCAT DELCAM-ALLPCAT DELCAM-DGKEXPORT
20:31:15 (delcam) DELCAM-DXFEXPORT DELCAM-DXFIMPORT SHOECAST-BASIC
20:31:15 (delcam) SHOETECH-REPORT SHOECAST-SHOECOST SHOETECH-SHOETECH
20:31:15 (delcam) SHOECUT-KNIFECUT SHOECUT-KNSAVE SHOECUT-NESTLEA
20:31:15 (delcam) SHOECUT-NESTSYN SHOECUT-PCUT SHOECUT-SHOECUT
20:31:15 (delcam) SHOELAST-BASIC SHOELAST-ORTHO SHOELAST-SHOELAST
20:31:15 (delcam) DELCAM-CHECKER AUTOMATION-NCHECKER AUTOMATION-NCPARTLOCATOR
20:31:15 (delcam) DELCAM-CERCONIMPORT DELCAM-EDRAWMU DELCAM-EXCEED
20:31:15 (delcam) DELCAM-MEASURE DELCAM-NUTC DELCAM-OPTIFEEED
20:31:15 (delcam) DELCAM-ORTHOMILL DELCAM-ORTHOMODEL DELCAM-ORTHOTIC
20:31:15 (delcam) DELCAM-PRESS DELCAM-SETIMPORT DELCAM-SHADE
20:31:15 (delcam) DELCAM-SURFIT DELCAM-UGEXPORT DELCAM-UNISURFIMPORT
20:31:15 (delcam) DELCAM-VERICUTEXPORT DELCAM-VIEWER DELCAM-WORKGROUP
20:31:15 (delcam) DELCAM-WINSTAT PARTMAKER-3PLUS2 PARTMAKER-ADVSIM
20:31:15 (delcam) PARTMAKER-ADVTLS PARTMAKER-ALLPOSTS PARTMAKER-BAXIS
20:31:15 (delcam) PARTMAKER-CAxis PARTMAKER-CPPROADV PARTMAKER-EDM
20:31:15 (delcam) PARTMAKER-FMS PARTMAKER-FOP PARTMAKER-MILL
20:31:15 (delcam) PARTMAKER-PDW PARTMAKER-PMM PARTMAKER-PROEIMPORT
20:31:15 (delcam) PARTMAKER-SMW PARTMAKER-SOLID PARTMAKER-STEPIMPORT
20:31:15 (delcam) PARTMAKER-SUBSPIN PARTMAKER-SWISS PARTMAKER-TURN
20:31:15 (delcam) PARTMAKER-TURNMILL PARTMAKER-YAXIS POWERMILL-AUTOCAM
20:31:15 (delcam) POWERMILL-NOGUI POWERMILL-PUNCH POWERMILL-SHOE
20:31:15 (delcam) POWERMILL-SIMULATION PSFXTURE-FITTING PSFXTURE-PSFIXTURE
20:31:15 (delcam) PSFXTURE-REPORTING
20:31:22 (lmgrd) delcam using TCP-port 1552
20:31:22 (delcam) Supplied to Team SolidSQUAD-SSQ
```

That's all..

Enjoy ☺

Cracked by **Team-SolidSQUAD**