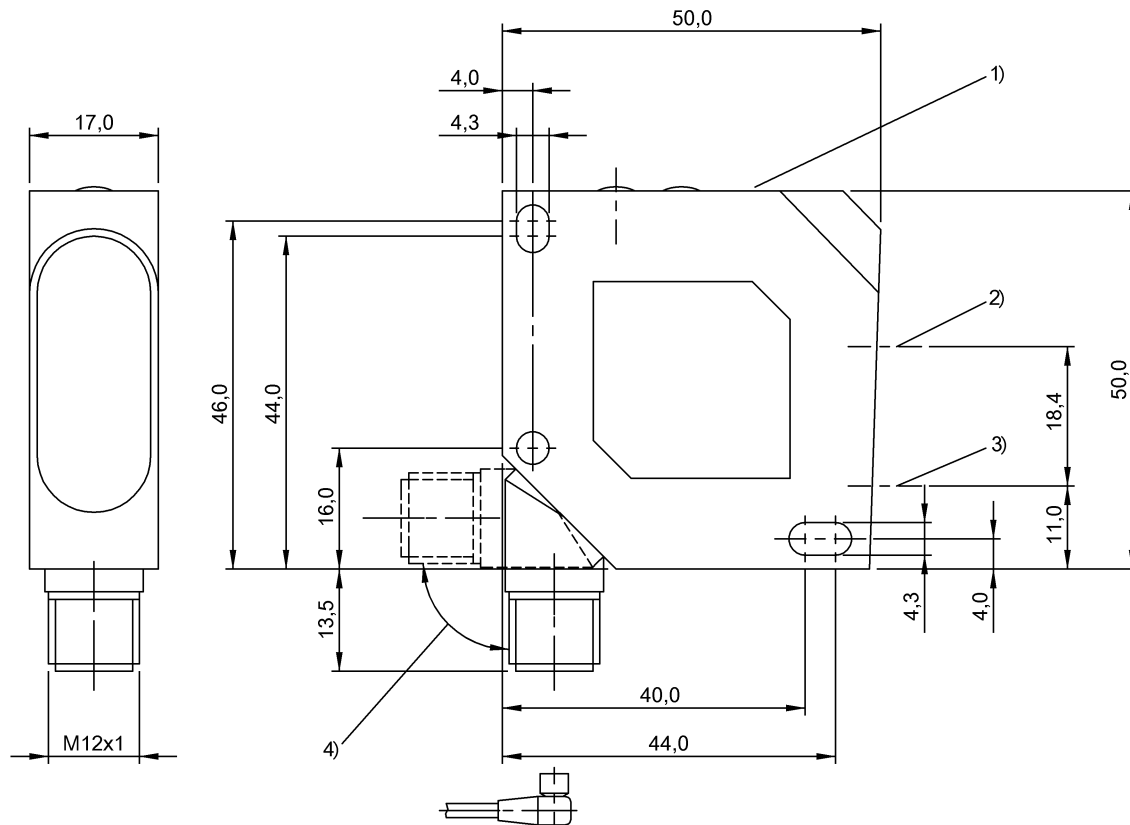
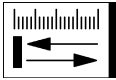


BOD 26K-LB06-S92-C
Ordering code: BOD0007

Photoelectric distance sensor
 Series 26K
 Working Range: 30...100 mm

PNP (1x), antivalent, 4...20 mA
 Laser red light, Laserklasse 2
 DC, direct current

BALLUFF
 sensors worldwide



1) Display and control panel, 2) Optical axis emitter, 3) Optical axis receiver, 4) 270° rotatable

Characteristic data

Operating voltage	18...30 V DC
Connection	Connector, M12x1-S92
Switching freq. f max.	1000 Hz
Indicator	Switching function NC - LED GN
Input function	Emitter on/off/Key disable
Setting	Factory setting (Reset), Light-on/dark-on, Mean value mode off/4ms/40ms, Switching distance, 2 values, Working range
Adjuster	Key (2x)
Short-circuit protected	Yes
Protected against polarity reversal	Yes
Enclosure Type per IEC 60529	IP67
Protection class	II

Optical data

Principle of optical operation	Light scanner, triangulation
Switching function, optical	Light-on/dark-on
Light spot size, typical	1.5 mm x 3.25 mm at 100 mm
Light type	Laser red light
Wavelength	650 nm
Ambient light max.	5,000 Lux

Laser class per IEC 60825-1
 Average power Po max.

2
 < 1 mW (IEC 60825-1)

Electrical data

Rated operating voltage Ue DC	24,0 V
Effective operating current Ie	100 mA
Rated insulation voltage Ui	50 V DC
Load capacitance max. (at Ue)	0,1 µF
Switching output	PNP (1x)
Switching function	NO/NC
Load resistance RL max.	500 Ohm
Turn-off delay toff max.	0,5 ms
Turn-on delay ton max.	0,5 ms
No-load current max. Io at Ue	40 mA
Analogue output	Analog I
Value range analogue	4...20 mA
Output curve deviation max.	0.25 % of (Wh-Wl)
Mean life expectancy	50000 h at 40 °C
Output characteristic	Linear rising/falling
Response time max.	0.4/40 ms

Mechanical data

Connector type	M12x1-S92
Eff. switching distance Sr	100 mm

BOD 26K-LB06-S92-C
Ordering code: BOD0007

Photoelectric distance sensor
Series 26K
Working Range: 30...100 mm

PNP (1x), antivalent, 4...20 mA
Laser red light, Laserklasse 2
DC, direct current

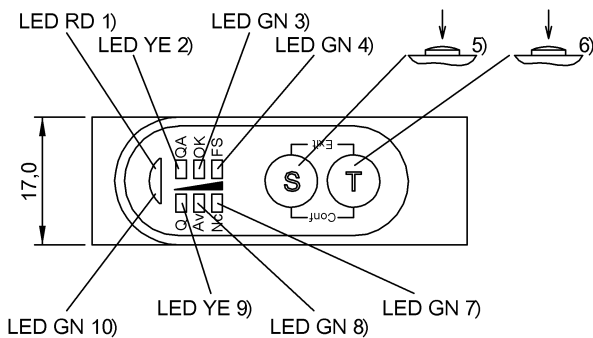
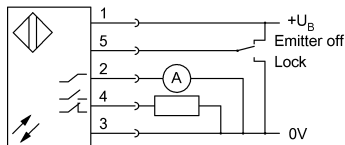
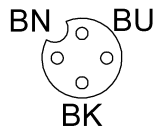
BALLUFF
sensors worldwide

Ambient temperature	-10...60 °C
Sensing surface material	PMMA
Housing material	ABS
Mounting type	Screw M4
Design	Block, rotatable connection
Temperature drift max.	0.02 %/K (% v. Wh)
Working range	30...100 mm adjustable
Capture range Sd	30...100 mm
Beam characteristic	Divergent
Range Sn	Sn = 100 mm, adjustable
Minimum operating distance	80 mm

Resolution	0.1 % v. (Wh-Wl)
Near working distance Wl	30 mm
Far working distance Wh	100 mm

Basic data

Basic standard IEC 60947-5-2, IEC 60947-5-7
 Only for NFPA 79 applications (machines with a supply voltage of maximum 600 volts). Device shall be connected only by using any R/C (CYJV2) cord, having suitable ratings.
 Order accessories separately.



- 1) Function activated
- 2) Object in range
- 3) Stability
- 4) Factory default active
- 5) Confirm teach-in/selection
- 6) Function/mode select
- 7) Dark-on active
- 8) Average value mode active
- 9) Output function
- 10) Ready/Setup mode