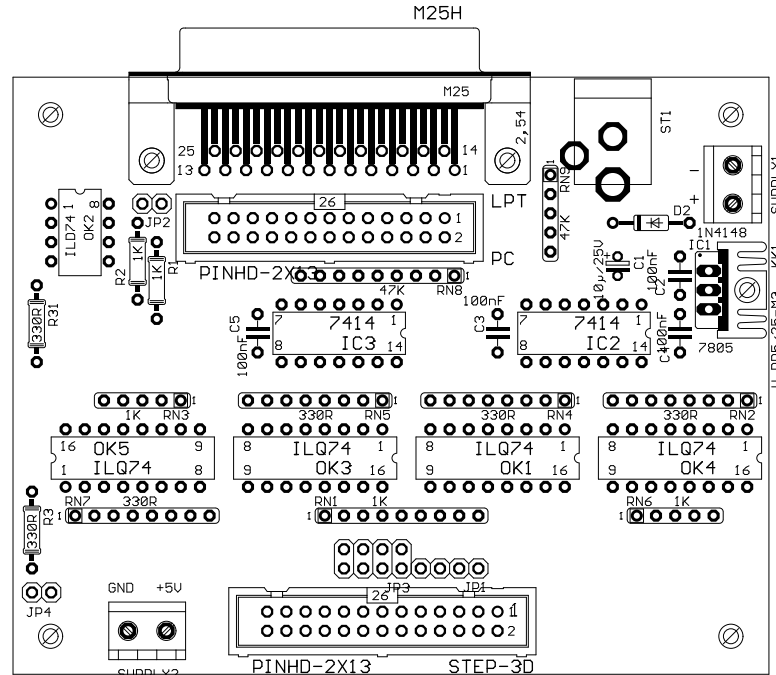


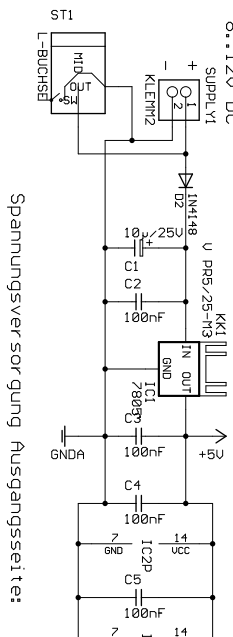
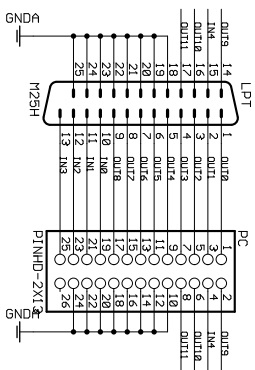
| Anz. | Wert | Teil | Name |
|------|-------------|------------------|--------------------|
| 2 | 330R | Widerstand | R3, R31 |
| 2 | 1K | Widerstand | R1, R2 |
| 4 | 330R | SIL8 | RN2, RN4, RN5, RN7 |
| 2 | 1K | SIL5 | RN3, RN6 |
| 1 | 47K | SIL5 | RN9 |
| 1 | 1K | SIL9 | RN1 |
| 1 | 47K | SIL9 | RN8 |
| 1 | 1N4148 | Diode | D1 |
| 4 | 100nF | Ker. Kondensator | C2, C3, C4, C5 |
| 1 | 10µ/25V | Elko | C1 |
| 1 | 7805 | v-reg | IC1 |
| 1 | DIL8 | IC-Sockel | |
| 2 | DIL14 | IC-Sockel | |
| 4 | DIL16 | IC-Sockel | |
| 2 | KLEMM2 | KLEMM2 | SUPPLY, SUPPLY2 |
| 1 | L-BUCHSE | L-BUCHSE | ST1 |
| 1 | M25H | SubD-25m print | LPT |
| 2 | PINHD-2X13 | Wanne 26p | PC, STEP-3D |
| 2 | PINHD-1X2 | Stiftleiste | JP2, JP4 |
| 1 | V PR5/25-M3 | IC-Kühlkörper | KK1 |
| 2 | 74HCT14 | 74HCTxx | IC2, IC3 |
| 1 | ILD74 | Optokoppler | OK2 |
| 4 | ILQ74 | Optokoppler | OK1, OK3, OK4, OK5 |



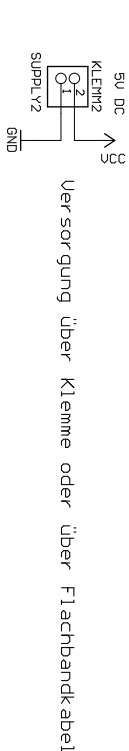
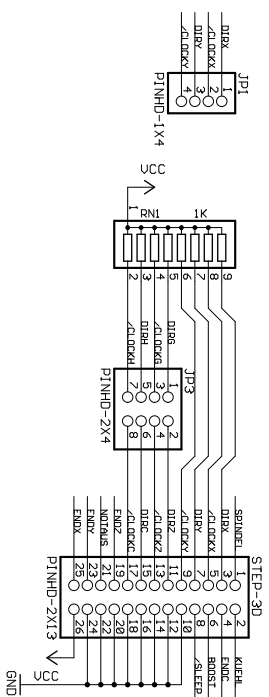
Viel Erfolg!
Thorsten Ostermann

11..12V AC Spannungsvorsorgung PC-seitig:

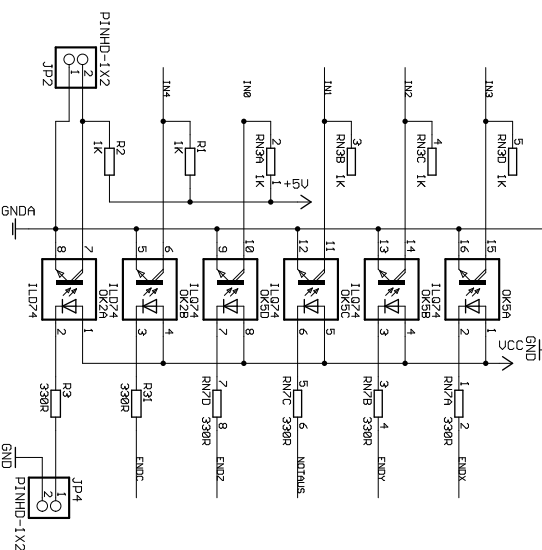
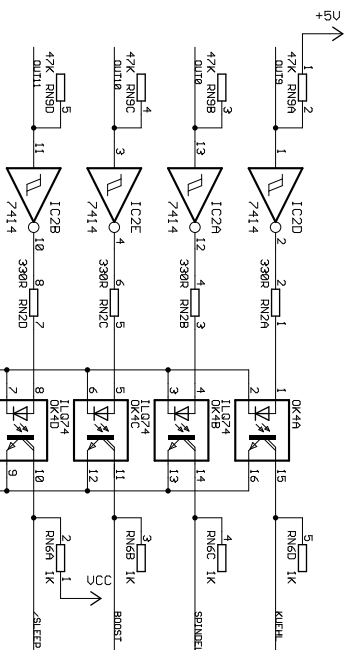
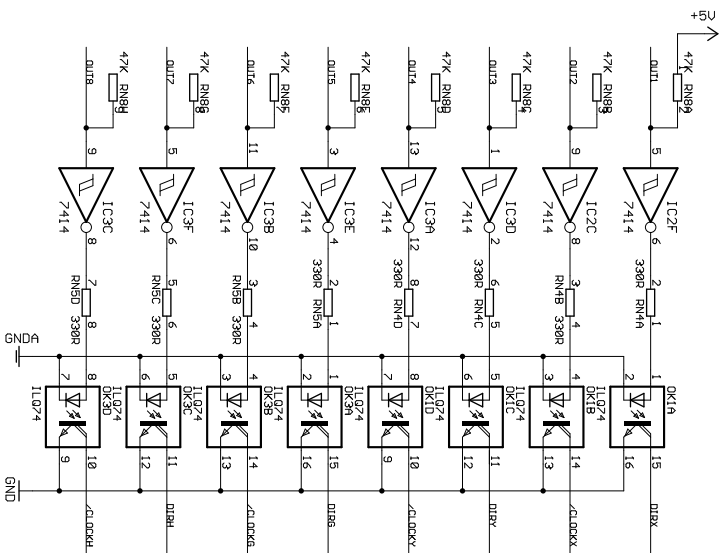
8..12V DC



Spannungsvorsorgung Ausgangsseite:



Versorgung über Klemme oder über Flachbandkabel



PP-Optokoppler

uuu,NC-Step-de

TITLE: PP-opto-1.2

Document Number:

Created by: T. Ostermann

Date: 20.05.2004 13:19:16

REV:

1.2

Sheet: 1/1