

EXPERIMENTAL BUILDING OF A ROTARY TOOL AT YOUR OWN RISK!

STEP FOUR

Preparing.....

After the rough prework
is cutting off a last slice
as close to the bearing as possible



Then using a file creating a flat surface
90 degrees to the shaft



Sorted!

Creating a a bracket for support to the ball bearing aswell machine mount



Scrap Alu or angular Alu profile



www.rcmodels.net

EXPERIMENTAL BUILDING OF A ROTARY TOOL AT YOUR OWN RISK!

- Ten (10!) Euro Frase - homebuild rotary

STEP ONE



Get yourself a flex cutter



6,66 Euro!
bought NEW!

STEP TWO



Remove the brushes

STEP THREE



Pull the collector from its case



Chop off the gearhead with a
metalsaw

www.rcmodels.net



EXPERIMENTAL BUILDING OF A ROTARY TOOL AT YOUR OWN RISK!



Using Loctite 330 aswell screws for assembly



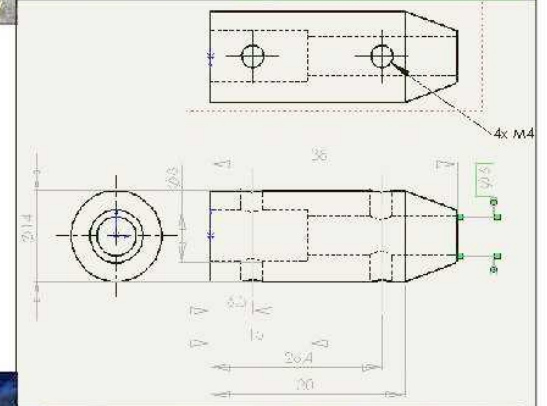
If wished a 43 mm adapter
can be added for universal mount.

STEP FIVE....

Assembly



Crucially!- Have an
adapter machined
precise for 6 / 8 mm



This rotary keeps
the 30.000 RPM
under most loads



Happy CNC-ing!
Chris

Olaf. G. Thanks!

