

3 Customization of Shop Docs

As mentioned earlier it may not be enough information for you/your customer in which case you need to customize the output.

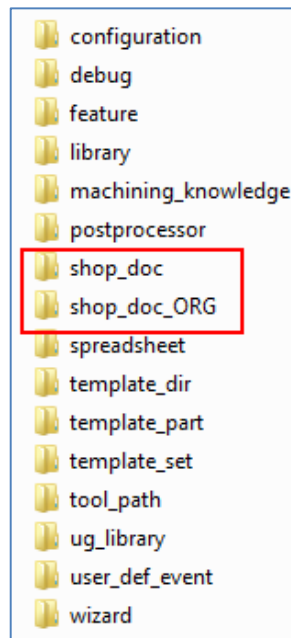
3.1 Activity 2 – Setup your file environment

In this activity, you will setup the file environment needed to create your customized shop docs.

- Open an explorer and go to your *NX installation/MACH/resource*

3.1.1 Copy shop_doc folder

- It is important to take a backup before making any changes to the OOTB files, therefore it is recommended to take a copy of the complete shop_doc folder now.
- Copy/Paste the folder *shop_doc*
- Rename folder to *shop_doc_ORG*



- In the shop_doc folder enter the folder *excel_templates*

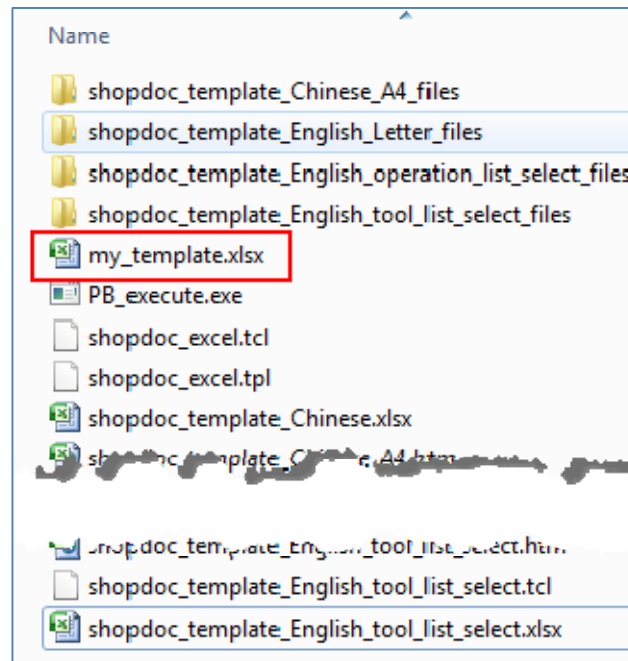
Here are all the OOTB template files located. Each of the templates contains 3 files and 1 folder. A tcl, htm and xlsx file.

*In this sample we use the template **shopdoc_template_English_operation_list.xlsx** as our template.*

3.1.2 Copy xlsx template

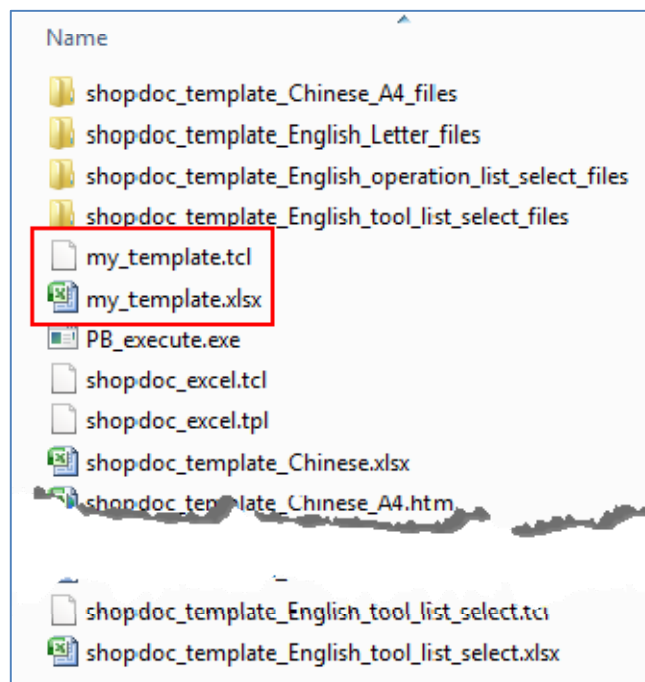
- Copy the file *shopdoc_template_English_operation_list.xlsx*

- *Paste and rename it to my_template.xlsx*



3.1.3 Copy tcl template

- Now *copy the corresponding tcl file, shopdoc_template_English_operation_list_select.tcl*
- *Paste and rename to my_template.tcl*

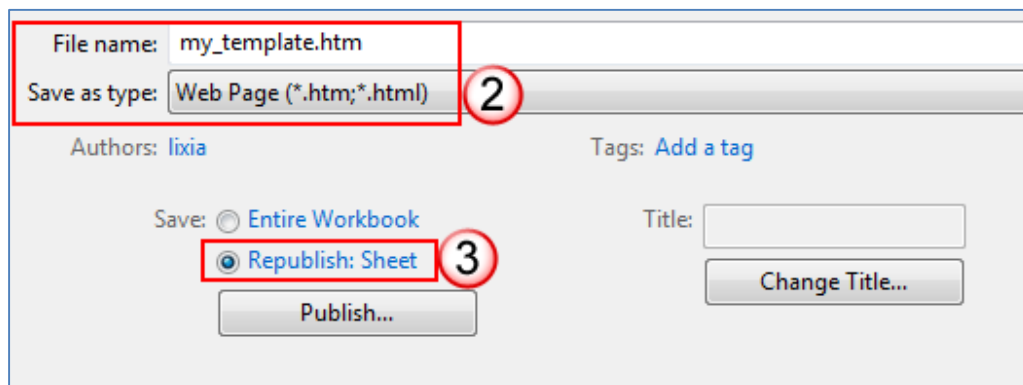
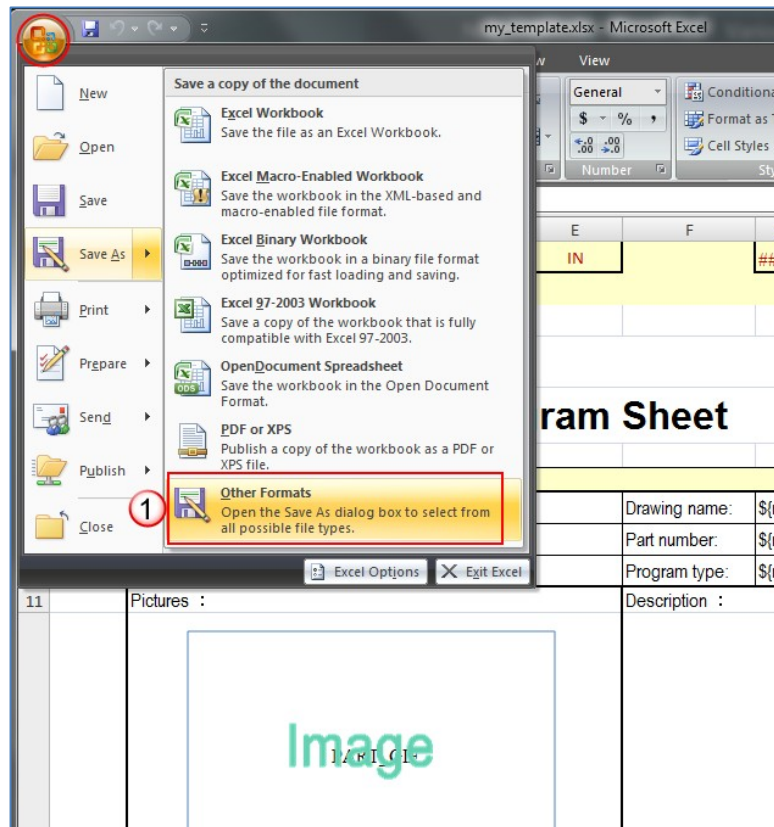


Now you have created the tcl and excel file. You now only need to create the htm file.

To do that you must open the my_template.xlsx file and save as an htm file.

3.1.4 Create htm file and folder

- Open my_template.xlsx
 - Save As → Other Formats

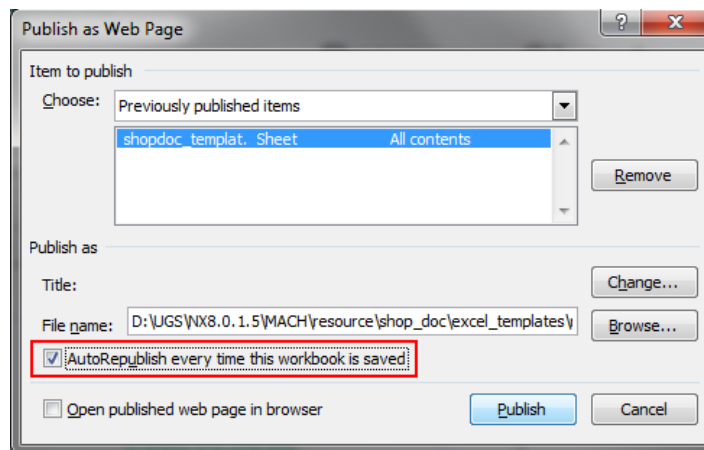


- Select web page (*.htm; *.html)
- Select Republish: Sheet
- Upon selecting **republish: Sheet**, the folder shown will reset to your OS document library folder.

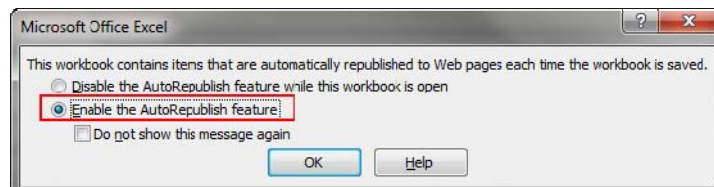
- Get back to the MACH/resource/shop_doc/excel_templates folder
- *Click Publish*

3.1.5 Setup automatic publishing.

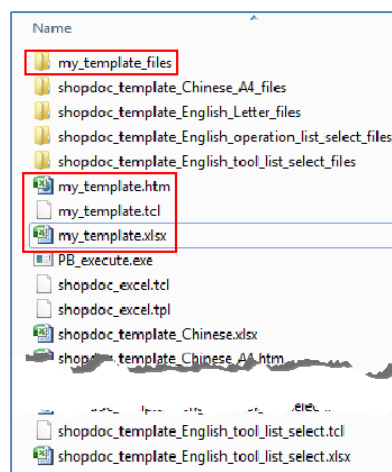
- **Publish a Web Page dialog** will show.
- *Check Autorepublish every time this workbook is saved*



- *Click Publish*
- *Once done, Click Save*
- *A new dialog will show.*



- *Check Enable the AutoRepublish feature and click OK*
- **Now all your files have been created**



3.1.6 Make the Shop Doc visible in NX

The Shop Documents which are visible in the Shop Documentation dialog in NX, are controlled in a shop_doc.dat file.

You will now modify the OOTB shop_doc.dat file to include your new my_template setup.

- In your explorer go one folder back, to the shop_doc main folder.
- Locate and open shop_doc.dat preferably in a text editor of some kind. (Notepad ++ is free and works very well)
- Copy the first entry as it is the corresponding entry to the template we copied earlier.
- Paste in line 28

```
23 # Tools and Operations (HTML), ${UGII_CAM_SHOP_DOC_DIR}tools_operations_html.tcl, ${UGII_CAM_SHOP_DOC_DIR}tools_operations_html.tcl, ${UGII_CAM_SHOP_DOC_DIR}tools_operations_html.tcl, ${UGII_CAM_SHOP_DOC_DIR}tools_operations_html.tcl,
24 # Advanced Web Page Mill (HTML), ${UGII_CAM_SHOP_DOC_DIR}mill_shopdoc_html.tcl, ${UGII_CAM_SHOP_DOC_DIR}mill_shopdoc_html.tcl, ${UGII_CAM_SHOP_DOC_DIR}mill_shopdoc_html.tcl,
25 # Advanced Web Page Mill Turn(HTML), ${UGII_CAM_SHOP_DOC_DIR}millturn_shopdoc_html.tcl, ${UGII_CAM_SHOP_DOC_DIR}millturn_shopdoc_html.tcl, ${UGII_CAM_SHOP_DOC_DIR}millturn_shopdoc_html.tcl,
26 # Export Tool Library to ASCII datafile, ${UGII_UG_LIBRARY_DIR}export_tools_to_ascii.tcl, ${UGII_UG_LIBRARY_DIR}export_tools_to_ascii.tcl, ${UGII_UG_LIBRARY_DIR}export_tools_to_ascii.tcl,
27
28 Operation List Select (HTML/Excel), ${UGII_CAM_SHOP_DOC_DIR}excel_templates\shopdoc
29
```

- Rename the initial 'Operation List Select' to 'My Template'
- Scroll sideways, and rename the entry 'shopdoc_template_English_operation_list_select.tcl' to 'my_template.tcl'

```
26 # Export Tool Library to ASCII datafile, ${UGII_UG_LIBRARY_DIR}export_tools_to_ascii.tcl, ${UGII_UG_LIBRARY_DIR}export_tools_to_ascii.tcl, ${UGII_UG_LIBRARY_DIR}export_tools_to_ascii.tcl,
27
28 My Template (HTML/Excel), ${UGII_CAM_SHOP_DOC_DIR}excel_templates\my_template.tcl, ${UGII_CAM_SHOP_DOC_DIR}excel_templates\my_template.tcl, ${UGII_CAM_SHOP_DOC_DIR}excel_templates\my_template.tcl,
29
```

- Save and close the .dat file
- Go to your NX session, and open the Shop Documentation dialog

