

Stepping Motors

M49SP-1

OUTLINE

"M49SP-1" has acquired the highest output torque among the outer diameter 49mm model series-holding torque : 181.3mN·m, pull-out torque : 62.7mN·m/150pps, and pull-in torque : 60.8mN·m/150pps (12V DC).

With superior running noiselessness and other features, this model motor is the most suited to future, compact electronic equipment.



FEATURES

1. High output torque.
2. Superior running quietness and stability.
3. Step angle : 7.5°.
4. Excellent responsiveness acquired.

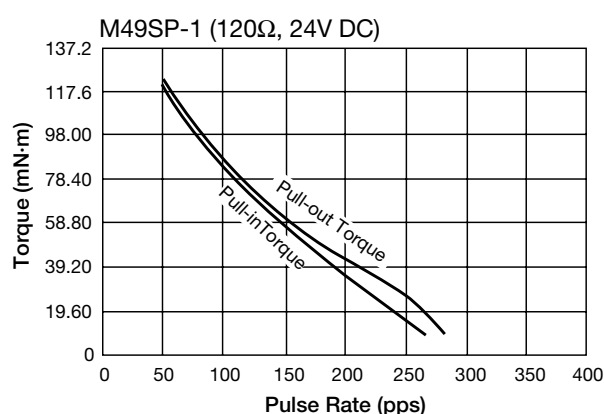
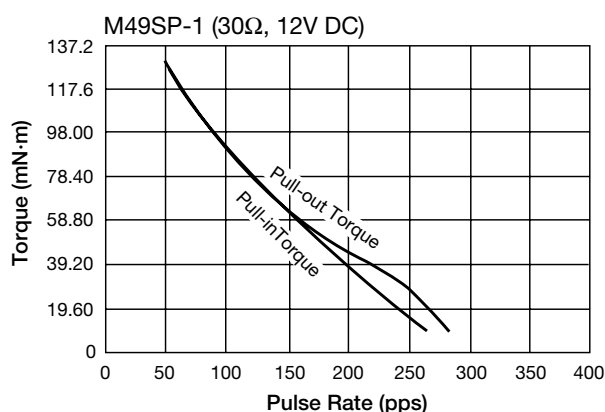
USES

Printers, facsimiles, copy machines, and such.

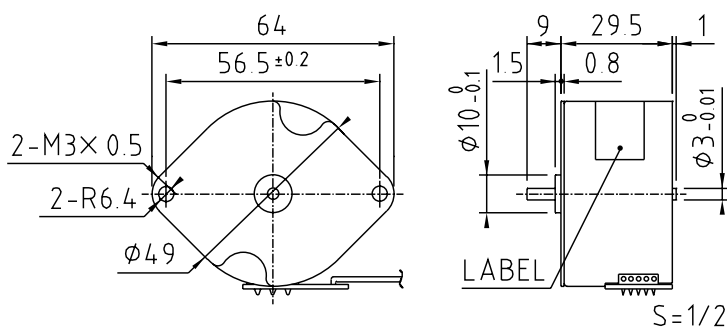
SPECIFICATIONS

Items	M49SP-1	
Rated Voltage	DC 12V	DC 24V
Working Voltage	DC 10.8~13.2V	DC 21.6~26.4V
Rated Current/Phase	431mA	216mA
No. of Phase	4 Phase	4 Phase
Coil DC Resistance	30Ω/phase±7%	120Ω/phase±7%
Step Angle	7.5°/step	7.5°/step
Excitation Method	2-2 Phase excitation (Unipolar driving)	
Insulation Class	Class E insulation	Class E insulation
Holding Torque	181.3mN·m	176.4mN·m
Pull-out Torque	62.7mN·m/150pps	60.8mN·m/150pps
Pull-in Torque	60.8mN·m/150pps	58.8mN·m/150pps
Max. Pull-out Pulse Rate	290pps	290pps
Max. Pull-in Pulse Rate	280pps	280pps

CHARACTERISTICS



DIMENSIONS



Unit : mm, General tolerance : ±0.5