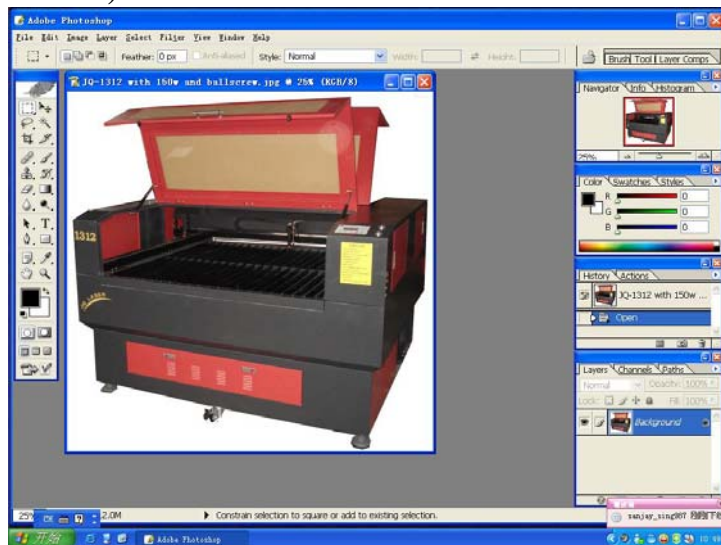
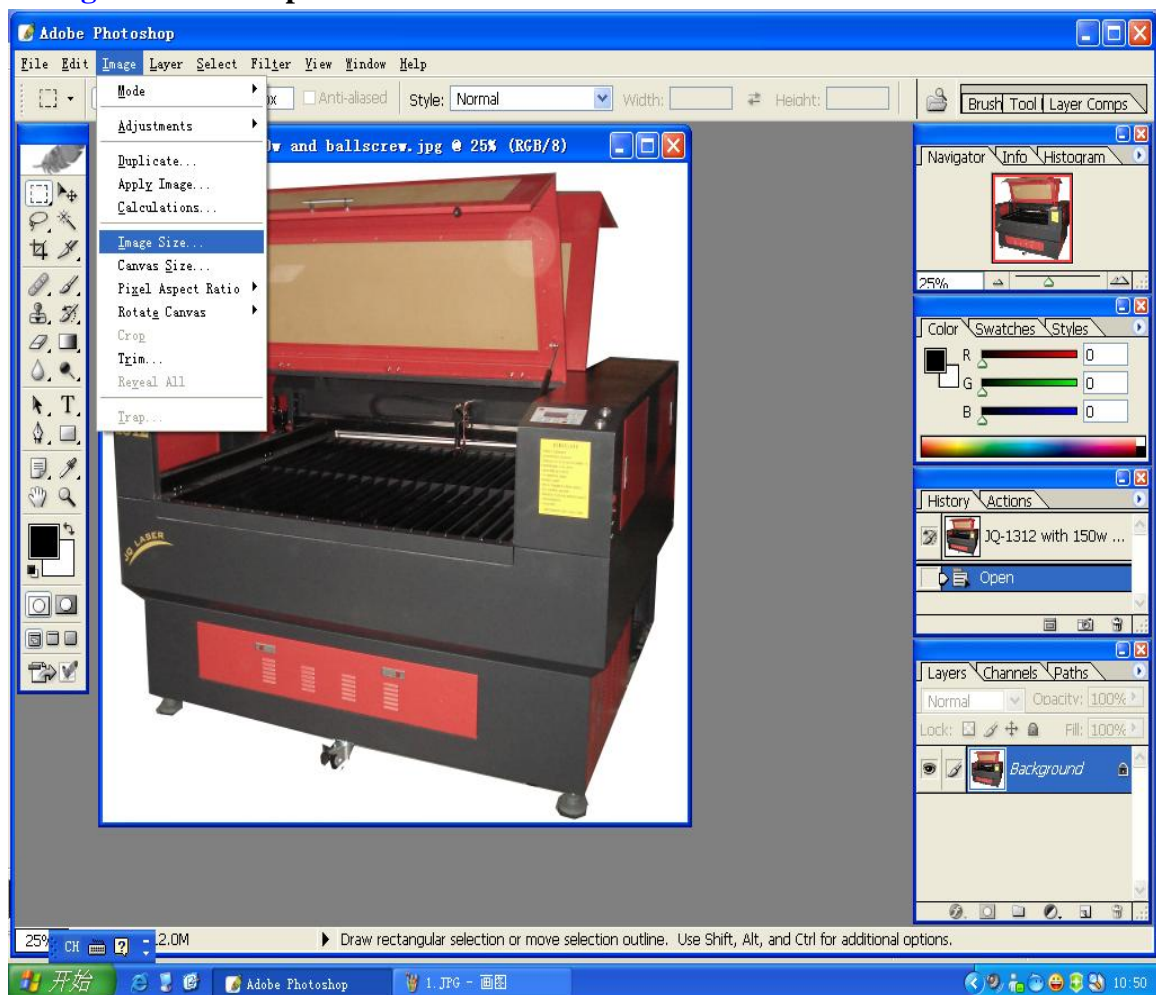


How to engrave JPG pictures with JQ laser machine?

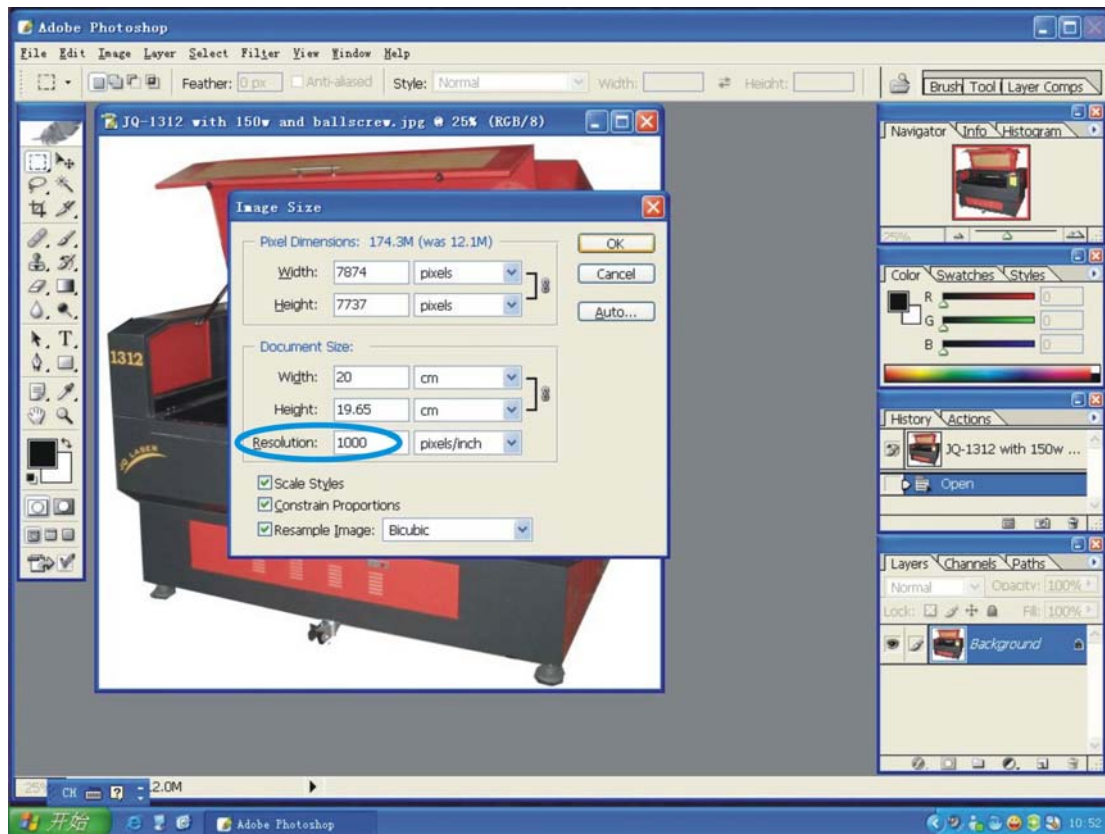
First Step: Open a picture in the Photoshop. (My Photoshop is Photoshop CS version)



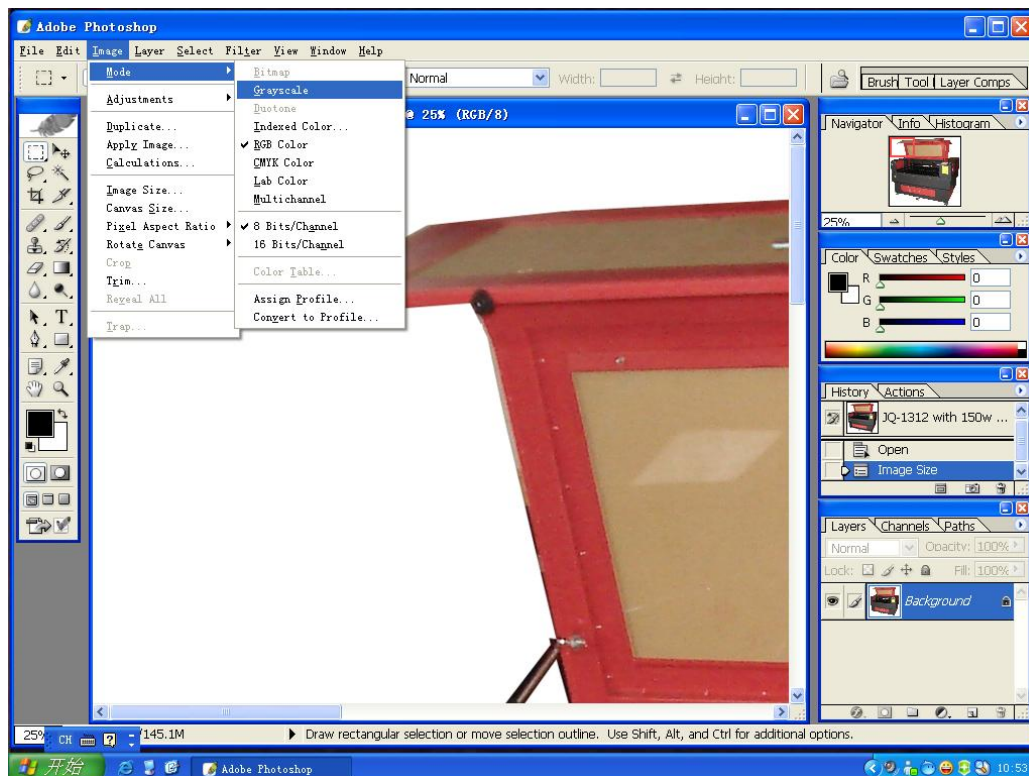
Second Step: In the menu of the Photoshop, the third one is "Image", there is "Image Size" in the pull-down menu.

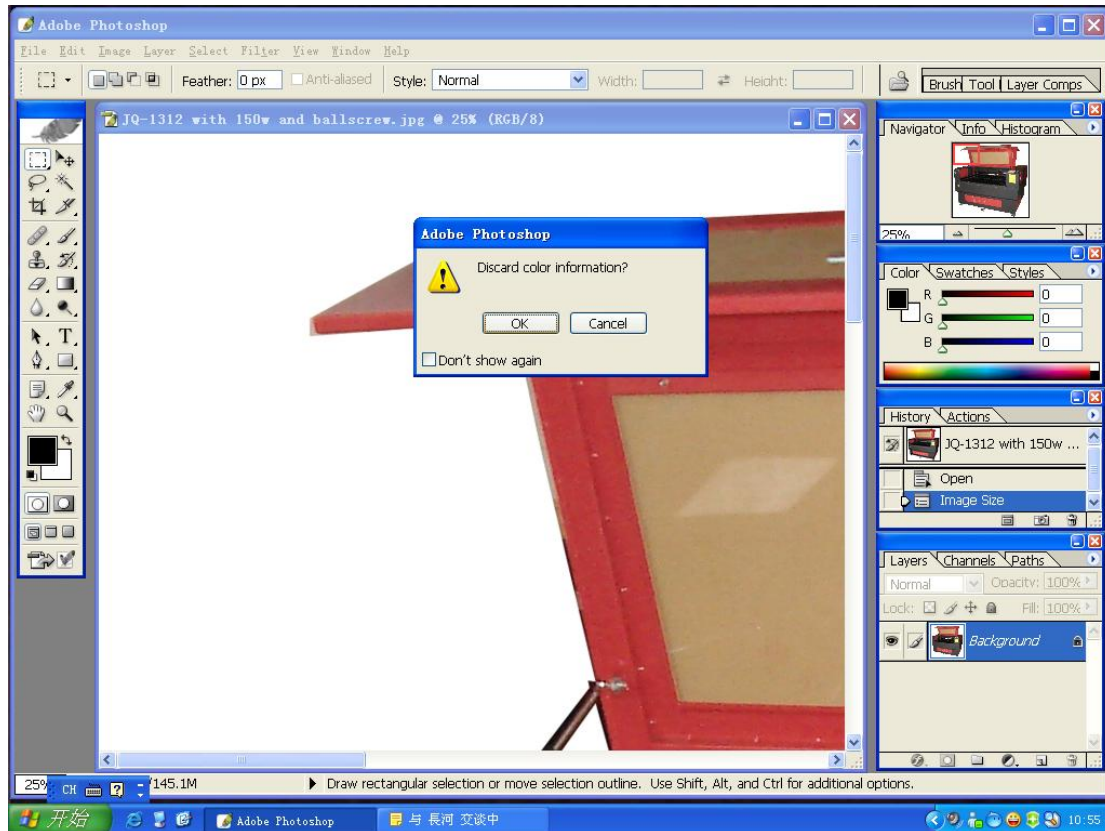


Third Step: In the "Image Size" screen, please set the "Resolution" at 1000. Then click "ok".

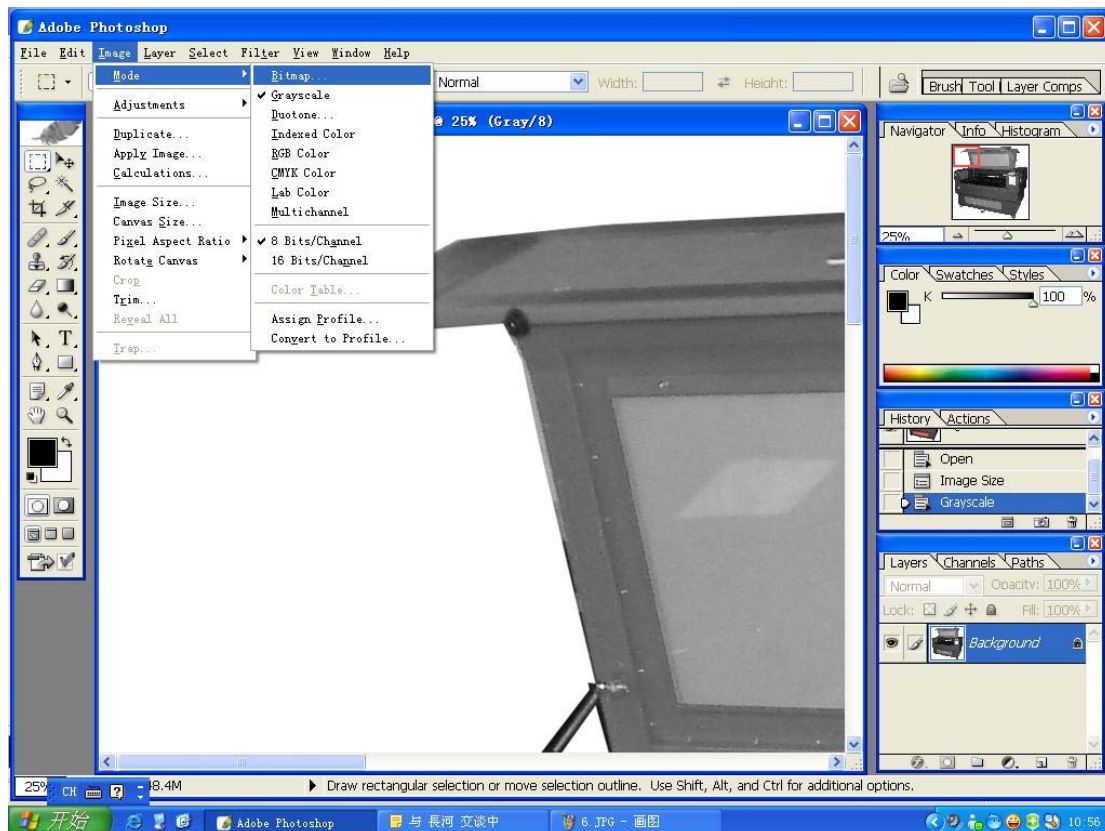


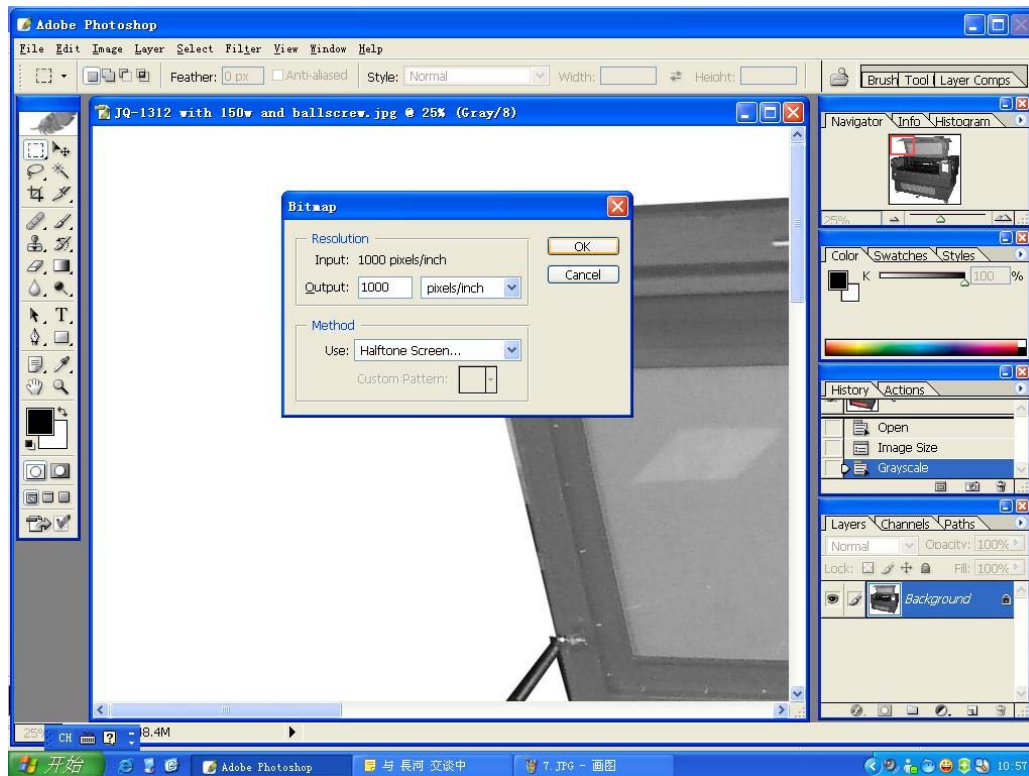
Fourth, **Image--Mode--Grayscale**, discard color information, then the picture will change into black and white color.





Fifth, **Image--Bitmap, Method-Use**, please select "**Halftone Screen**". Then click "**ok**".

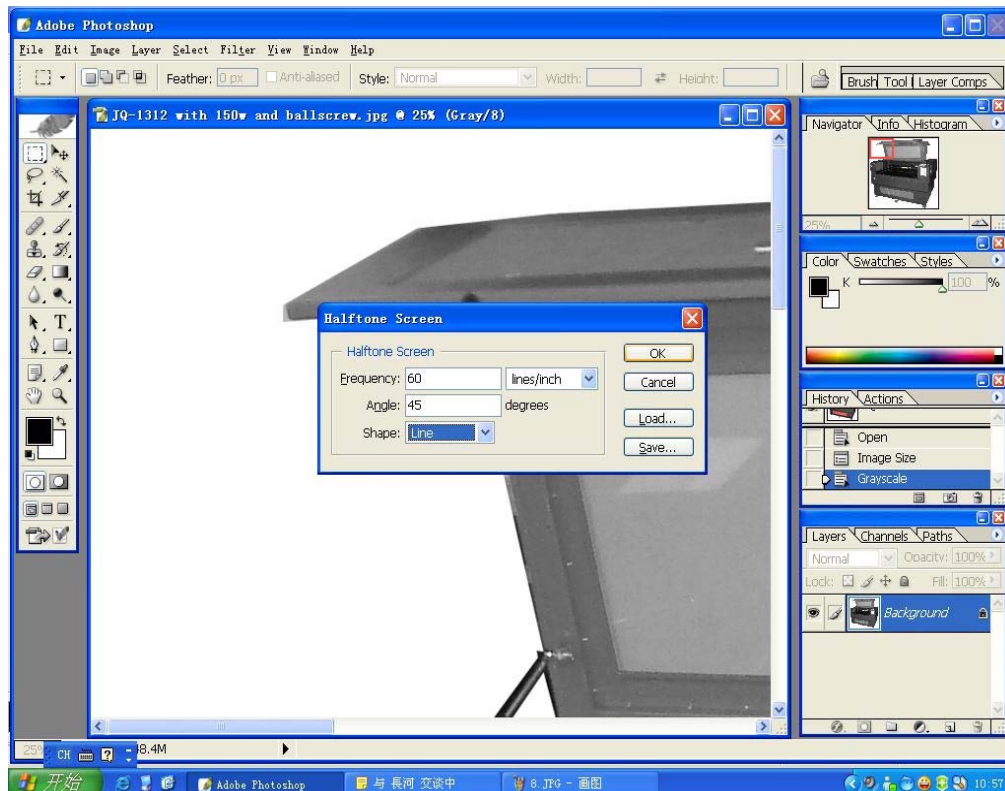




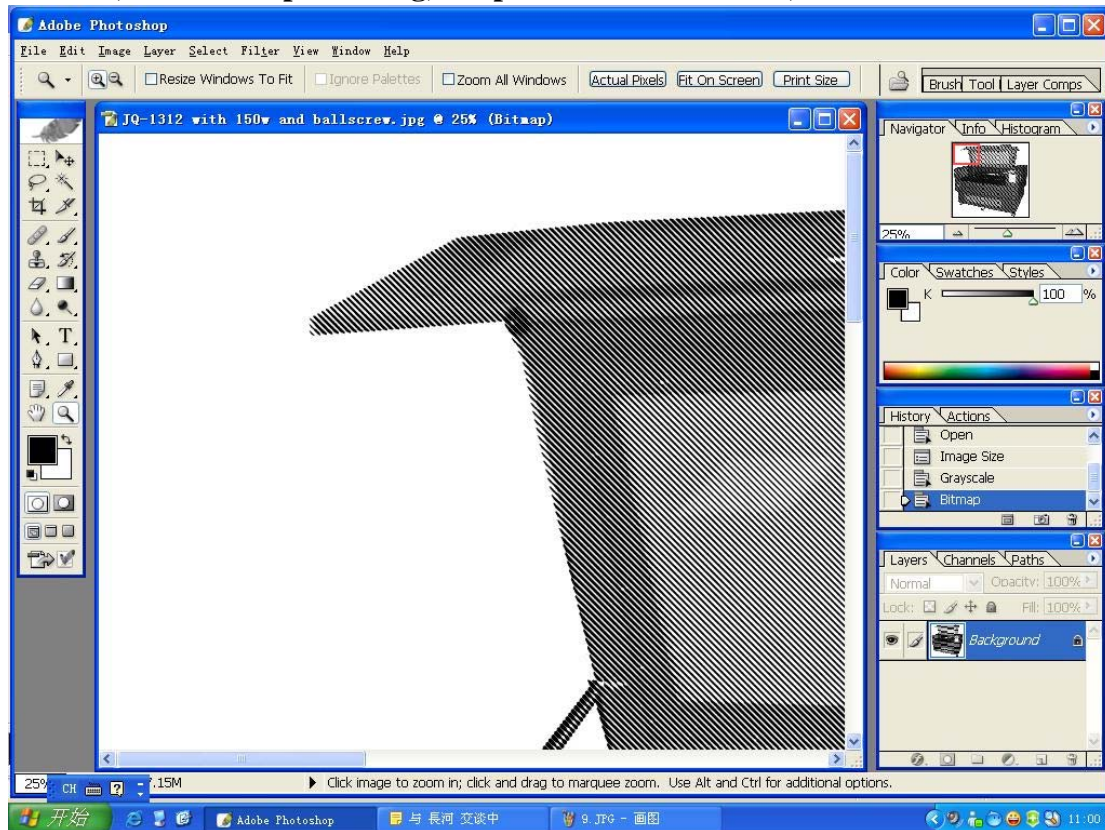
Sixth, there is another screen "**Halftone Screen**",
Frequency, set it from **50 to 90**. (Perfect effect need many times trying, and
different material need different parameter)

Angle: 45

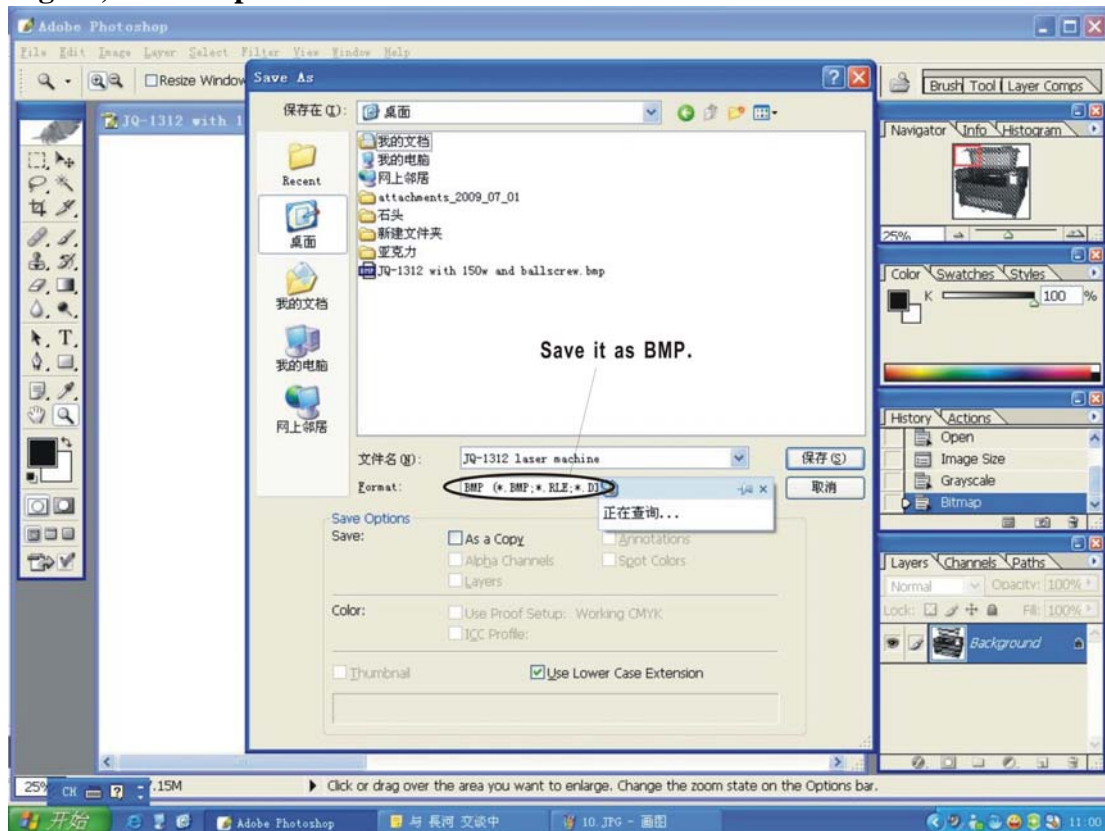
Shape: Line



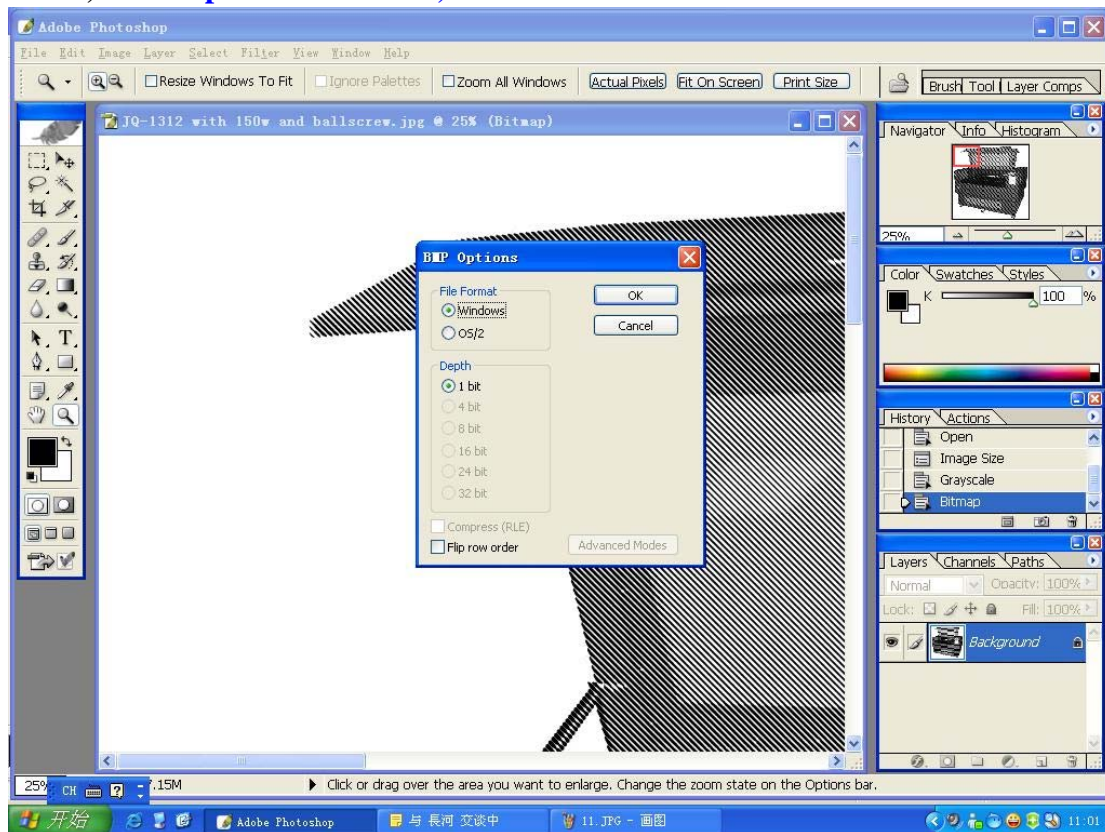
Seventh, after these processing, the picture will as follows,




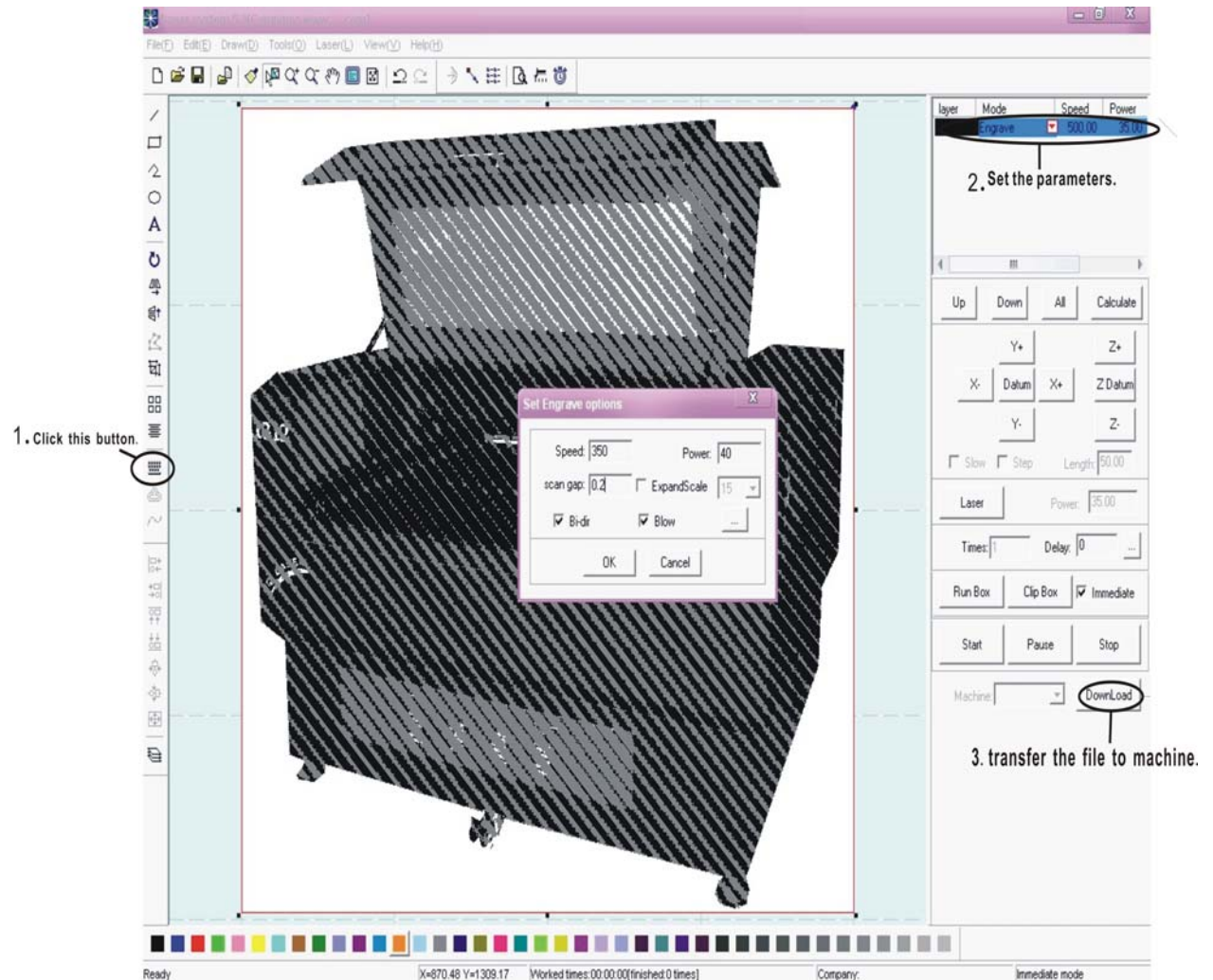
Eighth, save the picture as "BMP".



Ninth, BMP Options--Windows, 1bit is suitable.

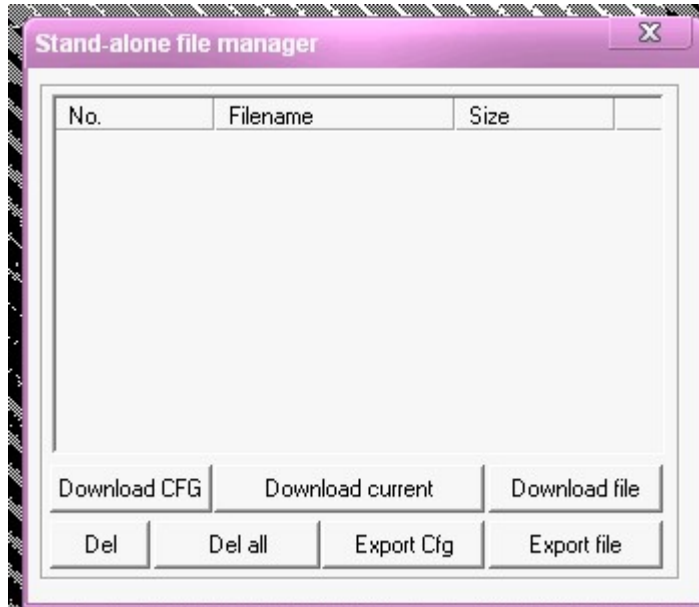


Tenth, open the Laser cut software, import the BMP picture. Then press this button . (It engraves black color of the BMP picture, not white color.) Then set the speed and power. At last, transfer the file to the machine.



When engraving on stones, **Speed: 350** **Power:40** **Scan gap: 0.15-0.5** (These settings only for your reference. Different material needs different settings. If these settings can not make a perfect effect, please slower the speed and change the power depends on the power).

Eleventh, after click "**Download**", there will be another screen,
If transfer the file with the cable that connect the machine with the control card,
please click "**Download Current**"(new file will replace old file in the machine) or
"**Download file**"(new file will not replace old file).
If transfer the file with USB, please click" **Export file**". Pay attention to: before
use the USB, please format it with FAT.



Amanda Liu

Jinan JinQiang Laser CNC Equipment Co.,Ltd

Add: No.145-8, Gongyebei Road, Jinan, China

Tel: 0086-531-88976878, 0086-15615615786

Fax: 0086-531-88033698

Mail: jqlaser@yahoo.com

Msn: jinqianglaser6@live.cn

Skype: jinqianglaser

Yahoo messenger: jinqianglaser6