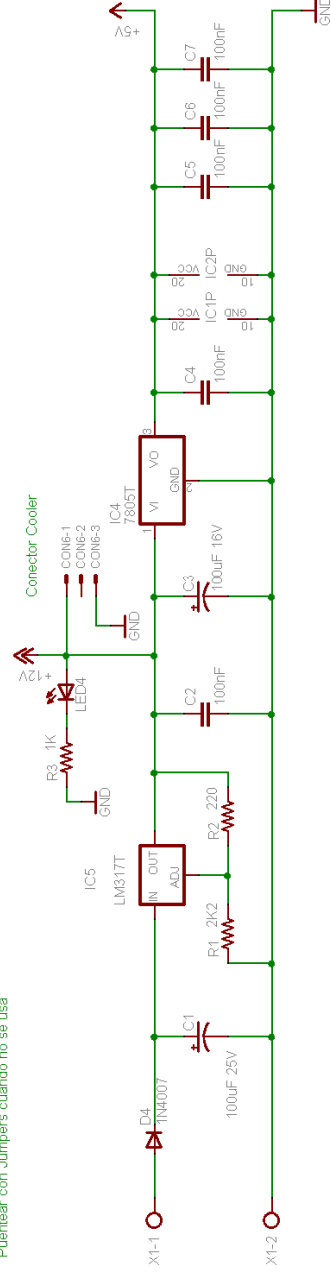


Conector para Expansión  
Puentear con Jumpers cuando no se usa



Autor: ESTECA55

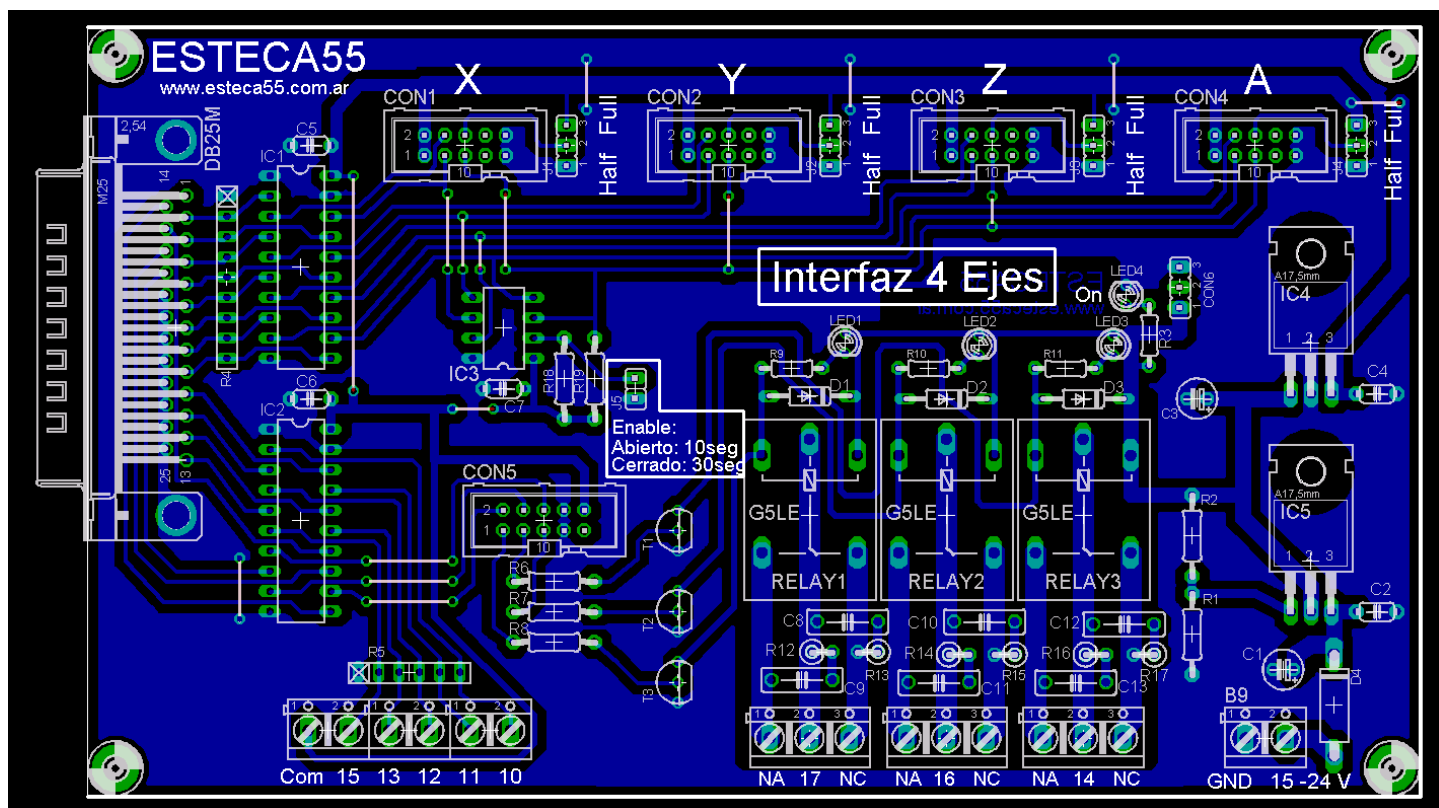
TITLE: Interfaz CNC v1.2

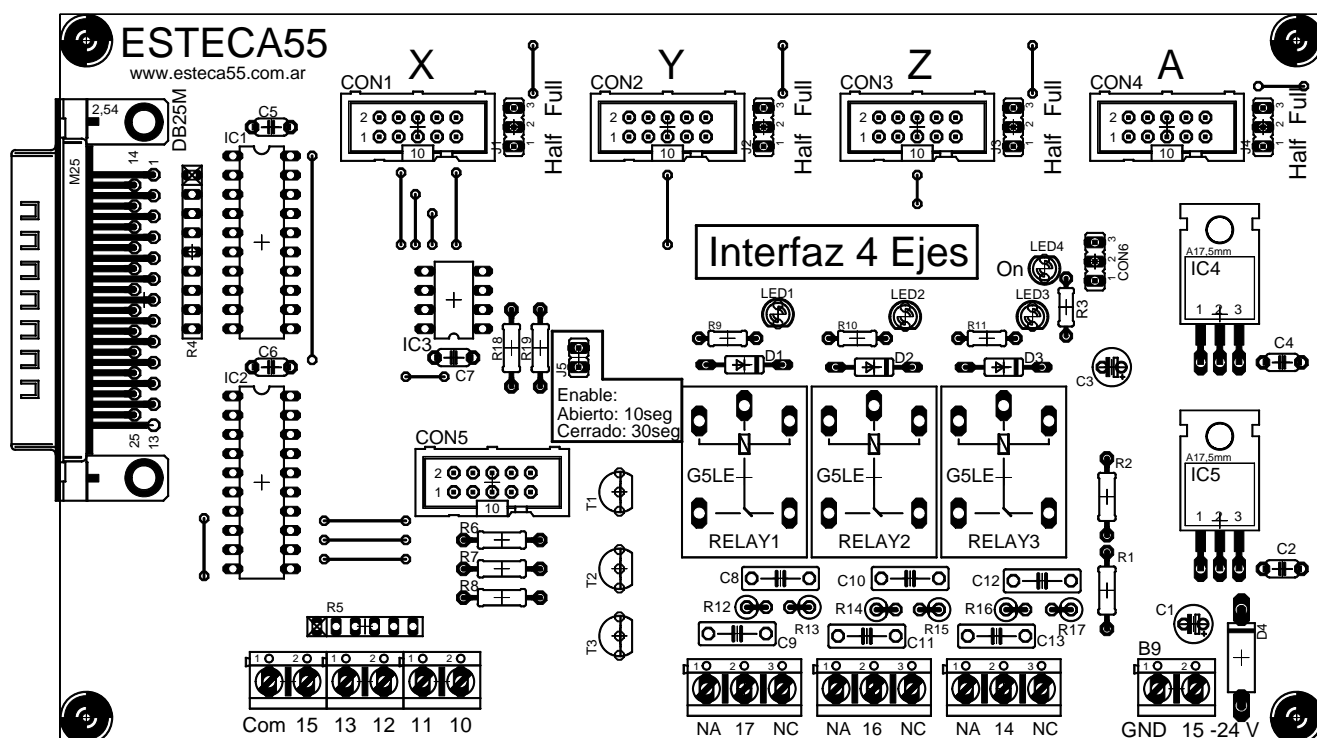
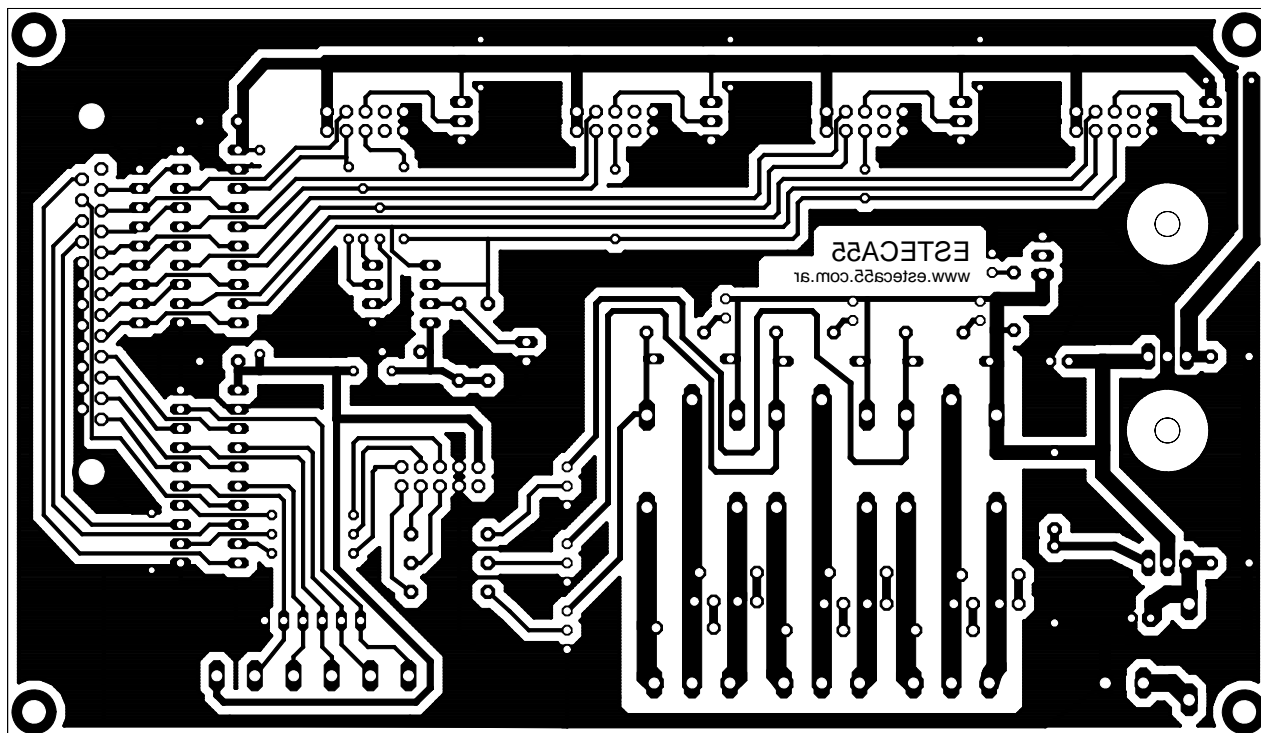
Document Number:

REV:

Date: 12/10/2007 12:45:34

Sheet: 1/1





## Partlist Interfaz CNC v 1.2

Part	Value
C1	100uF 25V
C2	100nF
C3	100uF 16V
C4	100nF
C5	100nF
C6	100nF
C7	100nF
C8	10nF / 400V
C9	10nF / 400V
C10	10nF / 400V
C11	10nF / 400V
C12	10nF / 400V
C13	10nF / 400V
CON1	IDC10M
CON2	IDC10M
CON3	IDC10M
CON4	IDC10M
CON5	IDC10M
CON6	Molex 3 conductores
D1	1N4007
D2	1N4007
D3	1N4007
D4	1N4007
IC1	74HC244N
IC2	74HC244N
IC3	PIC12F629
IC4	7805T
IC5	LM317T
J1	
J2	
J3	
J4	
J5	
LED1	
LED2	
LED3	
LED4	
R1	2K2
R2	220
R3	1K
R4	Array de 4k7 8+1
R5	Array de 4k7 5+1
R6	2K2
R7	2K2
R8	2K2
R9	1K

R10	1K
R11	1K
R12	100 / 1W
R13	100 / 1W
R14	100 / 1W
R15	100 / 1W
R16	100 / 1W
R17	100 / 1W
R18	10K
R19	4K7
RELAY1	Rele 12v
RELAY2	Rele 12v
RELAY3	Rele 12v
T1	2N3904
T2	2N3904
T3	2N3904
X1	Bornera Doble
X2	DB25 Macho
X3	Bornera Doble
X4	Bornera Doble
X5	Bornera Doble
X6	Bornera Triple
X7	Bornera Triple
X8	Bornera Triple

