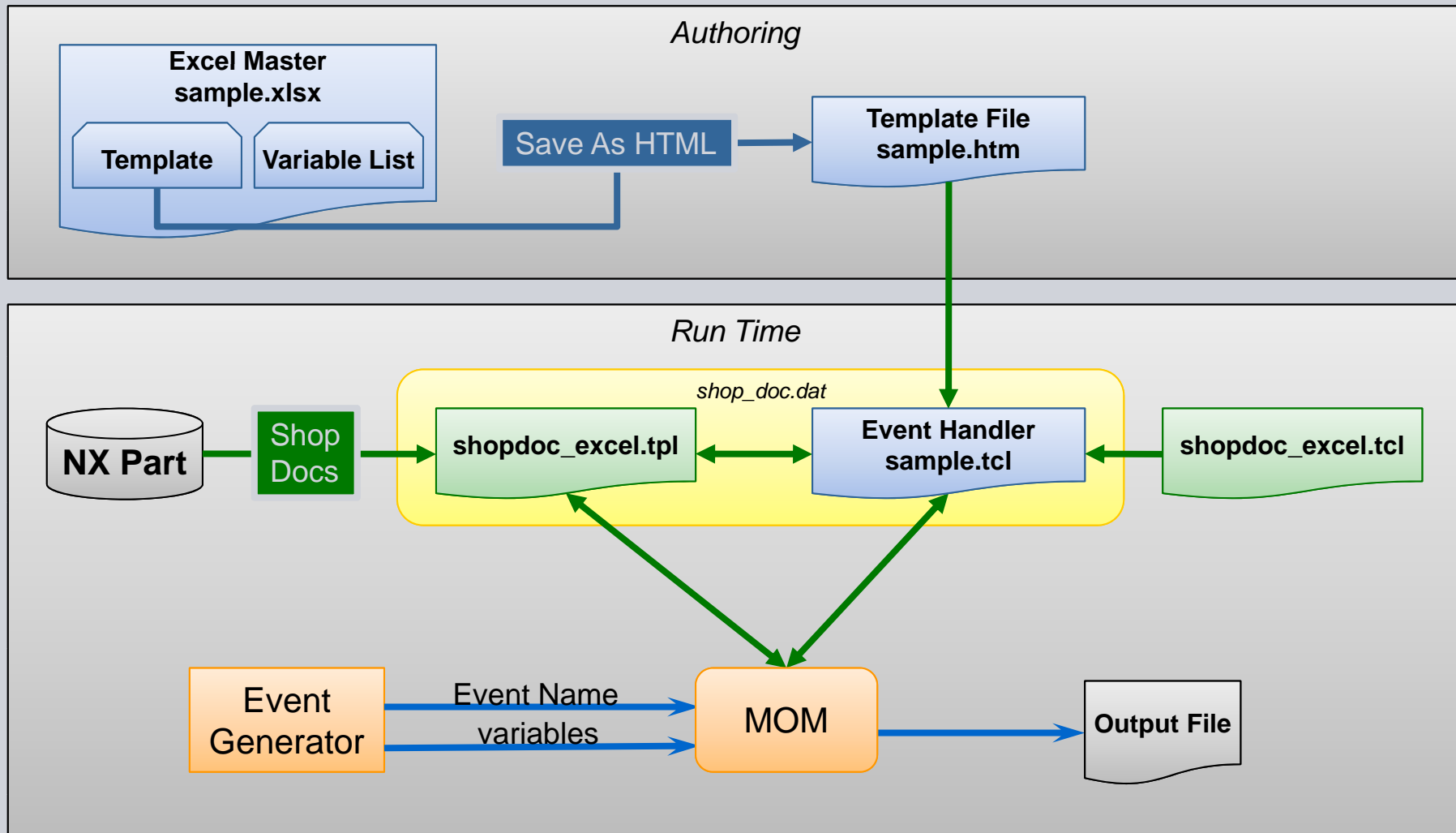


Shop Documentation Enhancements

- Scope
 - All of Setup or Selected Program/Object
 - Mill/Drill/Turn/WEDM/Probe Operations
 - Replaces Post Versions
- Template Customization
 - Use Excel to edit
 - Easy to create and modify
 - Requires no knowledge of TCL or MOM
- Output
 - Page content length
 - Repeat title
 - Tool and Operation tables
 - Graphics
 - Part attributes
 - Over 1000 MOM variables

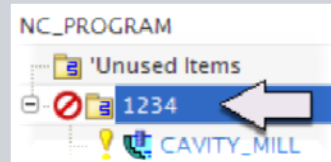
	A	B	C	D	E	F	G	H	I	J	K
1	####PAGE_CONTENT_LENGTH###			10	IN	####REPEAT_TITLE###			No		
2	####BODY_START###										
3	Page: \${our_page} of \${total_pages}										
4	SIEMENS										
5	Die Program Sheet										
6	XXX-XXX-XX										
7	####TITLE_START###										
8	Part name: \${mom_part_name}					Drawing name: \${mom_attr_PART_DRWNAME}					
9	Material: \${mom_attr_MATERIAL}					Machine: \${mom_attr_MACHINE}					
10	Machine: \${mom_attr_MACHINE}										
11	Pictures :										
12											
13	####TABLE_START###										
14	Index										
15	\${my_index}										
16	####TABLE_END###										
17	Author : \${mom_attr_AUTHOR}										
18	####BODY_END###										
19											
20											
21											
22											
23											
24											
25											
26											
27											
28											
29											
30											
31											
32											
33											
34											
35											
36											
37											
38											
39											
40											
41											
42											
43											
44											
45											
46											
47											
48											
49											
50											
51											
52											
53											
54											
55											
56											
57											
58											
59											
60											
61											
62											
63											
64											
65											
66											
67											
68											
69											
70											
71											
72											
73											
74											
75											
76											
77											
78											
79											
80											
81											
82											
83											
84											
85											
86											
87											
88											
89											
90											
91											
92											
93											
94											
95											
96											
97											
98											
99											
100											
101											
102											
103											
104											
105											
106											
107											
108											
109											
110											
111											
112											
113											
114											
115											
116											
117											
118											
119											
120											
121											
122											
123											
124											
125											
126											
127											
128											
129											
130											
131											
132											
133											
134											
135											
136											
137											
138											
139											
140											
141											
142											
143											
144											
145											
146											
147											
148											
149											
150											
151											
152											
153											
154											
155											
156											
157											
158											
159											
160											
161											
162											
163											
164											
165											
166											
167											
168											
169											
170											
171											
172											
173											
174											
175											
176											
177											
178											
179											
180											
181											
182											
183											
184											
185											
186											
187											
188											
189											
190											
191											
192											
193											
194											
195											
196											
197											
198											
199											
200											
201											
202											
203											
204											
205											
206											
207											
208											
209											
210											
211											
212											
213											
214											
215											
216											
217											
218											
219											
220											
221											
222											
223											
224											
225											
226											
227											
228											
229											
230											
231											
232											
233											
234											
235											
236											
237											
238											
239											
240											
241											
242											
243											
244											
245											
246											
247											
248											
249											
250											
251											
252											
253											
254											
255											
256											
257											
258											
259											
260											
261											
262											
263											
264											
265											
266											
267											
268											
269											
270											
271											
272											
273											
274											
275											
276											
277											
278											
279											
280											
281											
282											
283											
284											
285											
286											
287											
288											
289											
290											
291											
292											
293											
294											
295											
296											
297											
298											
299											
300											
301											
302											
303											
304											
305											
306											
307											
308											
309											
310											
311											
312											
313											
314											
315											
316											
317											
318											
319											
320											
321											
322											
323											
324											
325											
326											
327											
328											
329											
330											
331											
332											
333											
334											
335											
336											
337											
338											
339											
340											
341											
342											
343											
344											
345											
346											
347											
348											
349											
350											
351											
352											
353											
354											
355											
356											
357											
358											
359											
360											
361											
362											
363											
364											
365											
366											
367											
368											
369											
370											
371											
372											
373											
374											
375											
376											
377											
378											
379											
380											
381											
382											
383											
384											
385											
386											
387											
388											
389											
390											
391											
392											
393											
394											
395											
396											
397											
398											
399											
400											
401											
402											
403											
404											
405											
406											
407											
408											
409											
410											
411											
412											
413											
414											
415											
416											
417											
418											
419											
420											
421											
422											
423											
424											
425											
426											
427											
428											
429											
430											
431											
432											
433											
434											
435											
436											
437											
438											
439											
440											
441											
442											
443											
444											
445											
446											
447											
448											
449											
450											
451											
452											
453											
454											
455											
456											
457											
458											
459											
460											
461											
462											
463											
464											
465											
466											
467											
468											
469											
470											
471											
472											
473											
474											
475											
476											
477											
478											
479											
480											
481											
482											
483											
484											
485											
486											
487											
488											
489											
490											
491											
492											
493											
494											
495											
496											
497											
498											
499											
500											
501											
502											
503											
504											
505											
506											
507											
508											
509											
510											
511											
512											
513											
514											
515											
516											
517											
518											
519											
520											
521											
522											
523											
524											
525											
526											
527											
528											
529											
530											
531											
532											
533											
534											
535											
536											
537											
538											
539											
540											

ShopDoc Architecture for Excel Authoring



Generate Output

1. Pick an object



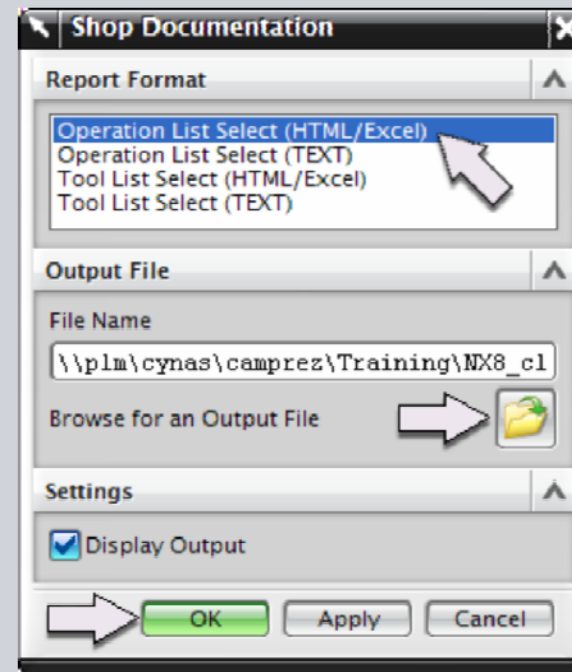
2. Click Shop Documentation



3. Select the desired template

4. Specify an output destination

5. Click OK



Edit an Existing Template

1. Edit the Excel file
2. Save As *.html to update the template
3. Generate output using updated template

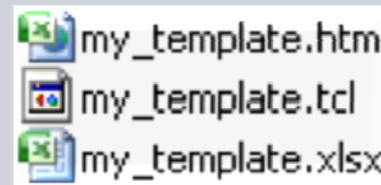
The screenshot shows an Excel spreadsheet template for a Siemens program sheet. Red arrows point to specific areas with labels:

- Paste Images**: Points to a placeholder box labeled "Image" in the center of the sheet.
- Edit Text**: Points to the "SIEMENS" logo in the top left.
- Edit Page Content Length**: Points to the "10" in the "PAGE_CONTENT_LENGTH" field.
- Repeat Title Y/N**: Points to the "No" in the "REPEAT_TITLE" field.
- Add/Edit Attributes**: Points to the "Part name" field.
- Add Text**: Points to the "Description" field.
- Edit Headings & Columns**: Points to the "TABLE" section at the bottom.
- Add/Edit MOM Variables**: Points to the "mom_attr_OPER" variable in the table.

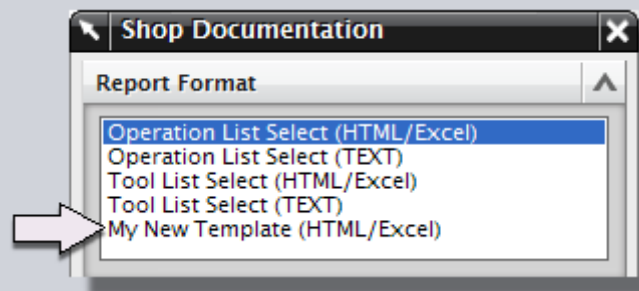
	A	B	C
1	Mom Variable	Class	Description
2	mom_attr_OPER <name>	Attributes	All attributes assigned to an operation will have the p
3	mom_attr_PROGRAMVIEW <name>	Attributes	All attributes assigned to a program will have the pref
4	mom_attr_TOOL <name>	Attributes	All attributes assigned to a specific tool object (carrier
5	mom_cycle_cam	Cycle	Value of the cam parameter in canned cycles. Can be
6	mom_cycle_clearance_plane	Cycle	Same as mom_cycle_rapid_to
7	mom_cycle_clearance_pos	Cycle	Same as mom_cycle_rapid_to_pos

Create a New Template

1. Edit and save the Excel file under a new name
2. Save As a new *.html file that the system will use as a template
3. Create a new .tcl file for the new template. It determines which .htm file to process when you select an option in the UI



4. Edit the shop_doc.dat file to determine which .tcl file to use and what you will see in the user interface



Printing and Page Formatting

- The Excel template provides minimal configurable options to help you specify the content length of each page

The screenshot shows an Excel spreadsheet with the following content:

	A	B	C	D	E	F	G	H	I	J	K	L
1	###PAGE_CONTENT_LENGTH###		10	IN		###REPEAT_TITLE###			No			
2	###BODY_START###			MM					Yes			
3				IN					No			
3	Page: \${cur_page} of \${total_pages}											
4	SIEMENS											
5	XXXXX Program Sheet											
6	XXX-XXX-XX											
7	###TITLE_START###											
8	Part name:	\${mom_part_name}			Drawing name:	\${mom_attr_PART_DRWNAME}						
9	Material:	\${mom_attr_PART_MATERIAL}			Part number:	\${mom_attr_PART_PARTNUM}						
10	Machine:	\${mom_attr_PART_MACHINE}			Program type:	\${mom_attr_PART_PROGTYPE}						

- PAGE CONTENT LENGTH determines the distance between page break labels in the output. It does not determine the content of each printed sheet
- REPEAT TITLE Yes/No allows you to repeat the title block (area between ###TITLE START### and the first ###TABLE START### markers)