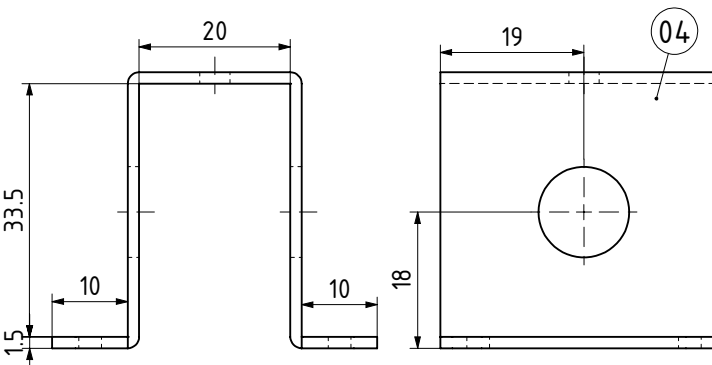
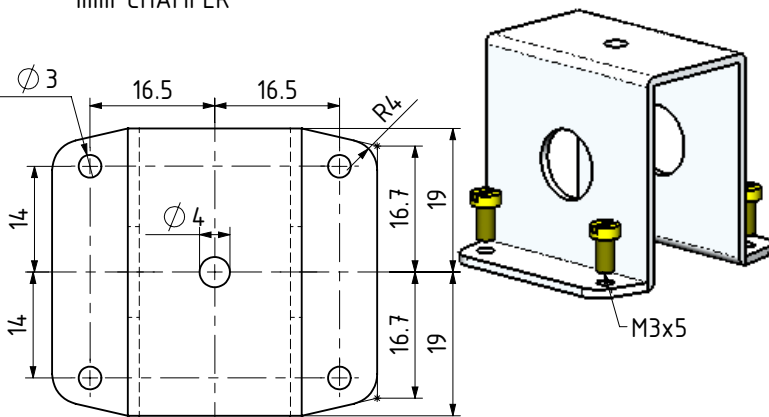
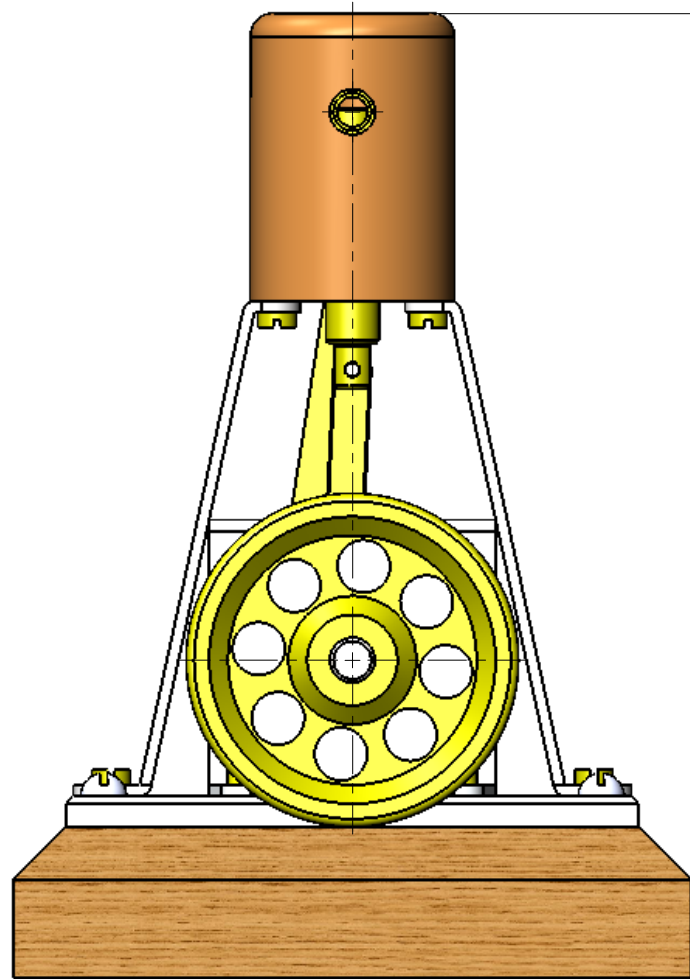
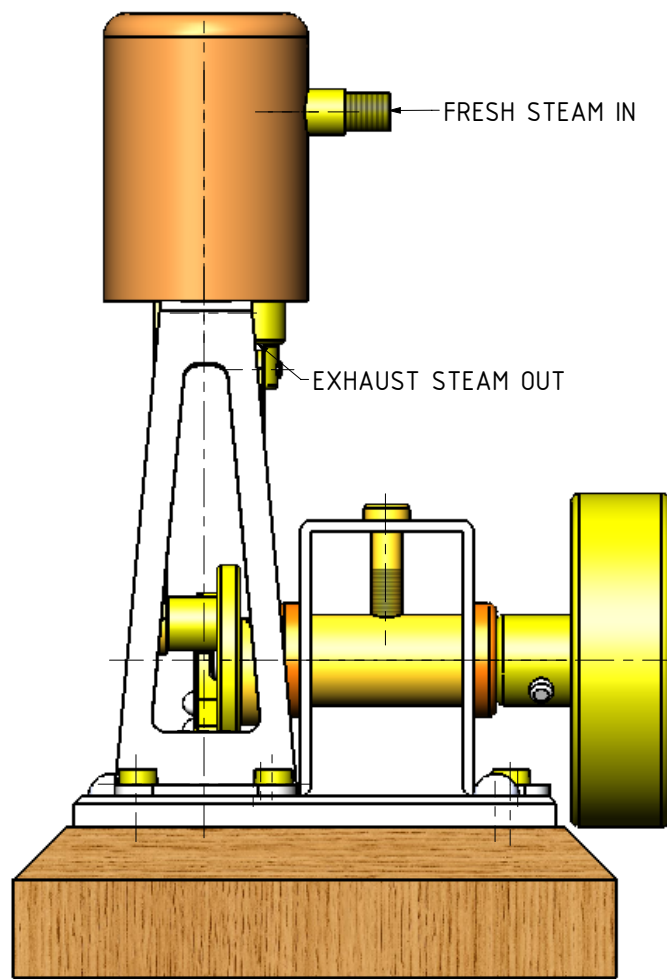
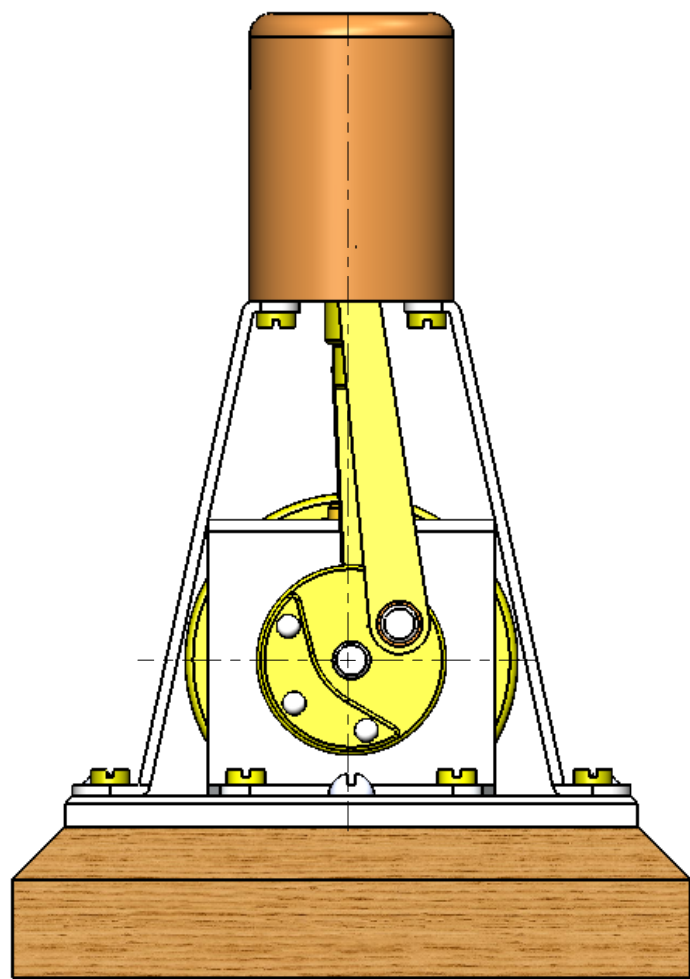
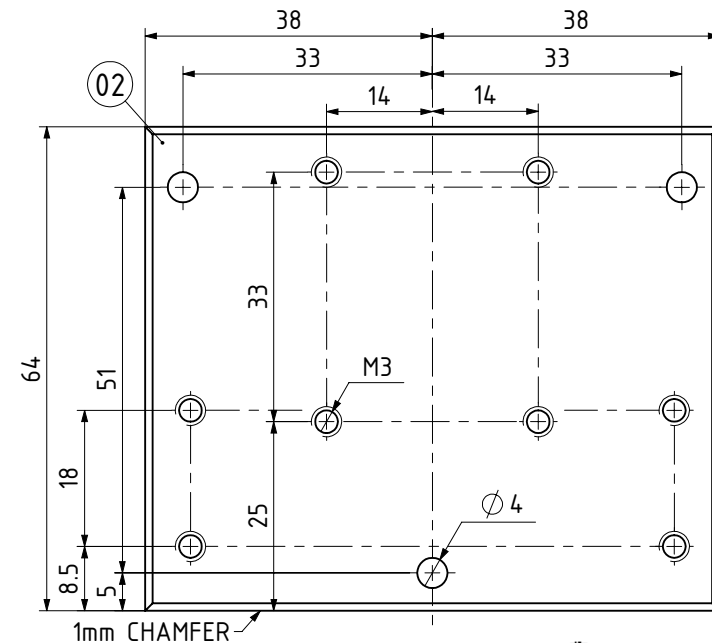



| QTY. | PART NUMBER |
|------|------------------------------------|
| 1 | PM63-01-WOODEN BASE |
| 1 | PM63-02-BASE PLATE |
| 3 | PM63-03-4mmx15 WOOD SCREW |
| 1 | PM63-04-CRANK SHAFT BEARING HOLDER |
| 1 | PM63-05-BEARING END |
| 2 | PM63-06-CYLINDER HOLDING BRACKET |
| 1 | PM63-07-CYLINDER |
| 1 | PM63-08-FLYWHEEL |
| 1 | PM63-09-CRANK SHAFT |
| 1 | PM63-10-CRANK PLATE |
| 1 | PM63-11-CRANK PIN |
| 1 | PM63-12-CRANK PIN SPACER |
| 1 | PM63-13-ECCENTRIC |
| 1 | PM63-14-VALVE |
| 1 | PM63-15-VALVE CON ROD |
| 1 | PM63-16-PISTON |
| 1 | PM63-17-PISTON CON ROD |



THIS ENGINE WAS PUBLISHED IN THE "POPULAR MECHANICS" MAGAZINE IN JANUARY 1963 PAGES 142 TO 146

| | | | | | | | | | | | | | |
|-------|--|--|--|--|--|-------------------------|---------------------------------|-------------------------|--------------------------|----------------|---|----------------|-------|
| TITLE | SIMPLE STEAM ENGINE CALLED "ONE-LUNGER" | | | | | | | | JDW DRAUGHTING SERVICES | DRAWN BY | PROJECTION | DRAWING NUMBER | SHEET |
| A3 | PARTS AND ASSEMBLIES | | | | | | | | 12 BRIGHTWELL STREET | J.A.M. DE WAAL |  | PM63-01 | |
| | | | | | | | | | PAPAKURA NEW ZEALAND | | | | |
| | | | | | | | | | TEL/FAX 0064-09-2988815 | DATE | SCALE 1:1 @A3 OR | SHT OF SHT | REV |
| | IF NOT STATED ALL CHAMFERS AND FILLETS 0.1mm | | | | | DO NOT SCALE OF DRAWING | REMOVE ALL BURS AND SHARP EDGES | ISSUED FOR CONSTRUCTION | E-MAIL:dewaal@xtra.co.nz | JANUARY 2012 | AS SHOWN | | A |

